



THE CZECH & SLOVAK SPECIALIST

(USPS 808300)

Official Bi-Monthly Journal of the Society for Czechoslovak Philately, Inc.

Winner of Reserve Grand Award at ORAPEX '91; Silver at PHILITEX '92

A. P. S. Unit 18

ISSN: 0526-5843

Vol. 55

JANUARY/ FEBRUARY 1993

No. 1, Whole No. 517

President's Corner

FLOREX AND OTHER HAPPENINGS

By Ludvik Svoboda
Pres., S.C.P

By the time you receive this issue, the Holidays will have been over. But I do hope that you all had a wonderful time and that you and your families will find happiness in the New Year!

Please mark the dates of November 5, 6 and 7 of 1993 on your calendars as an important event for our Society. For on those days, we will all be participating at FLOREX 93 in Orlando, Florida. By managing to cut through some political red tape, I was successful in arranging for us to receive an invitation to hold our 1993 S.C.P. convention at their site not far from Disneyland and Universal Studios. This will occur before the next winter season so you can plan some of your vacation time around your attendance at this big show. In the next issue, I hope to have more details about it, especially our part in the stamp exhibition.

Scott Publishing Company has contacted us requesting we provide them with input about the corrected valuation of postal items of Czechoslovakia issued since World War II (about the Spring of 1945). Henry Hahn has already been working with them to comply with their policy that the catalog include only genuinely issued postal items. (see Jan/Feb 1991 SPECIALIST, page 15). If you have any thoughts, concerns, or suggestions on what the correct value should be regarding stamps of Czechoslovakia, Bohemia-Moravia, Slovakia or Eastern Silesia in Scott's Catalog, please write me or Henry Hahn. Our deadline to Scott's is March.

Continued on page 12

TABLE OF CONTENTS

| <i>Articles</i> | <i>Author</i> | <i>Page</i> |
|--|---------------|-------------|
| 1. King George of Poděbrady | G. van Zanten | 3 |
| 2. Curiosities of Third Airmail Issue..... | V. Bubák | 8 |
| 3. A Closer Look at Music Stamps | H. Moore | 9 |
| 4. Use of Postage Due | H. Hahn | 11 |
| <i>Columns</i> | | |
| 5. President's Column | L. Svoboda | 1 |
| 6. Scout Covers in an Auction..... | C. Chesloe | 13 |
| 7. For the Beginner - End Overprints..... | P. Freer | 13 |
| 8. New Issues..... | H. Hahn | 15 |
| 9. Welcome New Members..... | | 17 |
| 10. Membership Roster | | 17 |

IT'S TIME FOR NOMINATIONS

This is the time of year when every member in good standing, no matter when he joined, has the privilege to exercise his or her right to vote for the Society's Board of Directors. To elect a member to the Board, you first have to nominate him. You can nominate anyone you wish who is a member in good standing provided you notify that person beforehand and obtain his or her consent to run for office.

It takes two members to nominate a candidate. So be sure you contact another member because both members must sign the nominating form. The candidate you are nominating need not sign. However, DO NOT place anyone's name in nomination unless you first consulted that person and that person agreed to it. (See Nominating form on page 23).

Although any paid-up member may be nominated for the Board, the following are currently Board members and still remain on the Board for either two or four more years:

| | | |
|-----------------|----------------|--------------------|
| Charles Chesloe | Edwin Lehecka | Jack Benchik |
| Richard Major | Phillips Freer | Richard Palaschak |
| Robert Koschalk | Jane Sterba | Frederick Lawrence |
| Jerry Verner | | |

If you nominate any of the above ten, it would be a wasted nomination because they will continue to serve on the Board anyway. However, the terms of office of the following five Board members expire this year and THEY ARE ELIGIBLE for renomination:

| | | |
|----------------|----------------|--------------|
| Vladimír Bubák | Frank Julsen | Mirko Vondra |
| Henry Hahn | Ludvik Svoboda | |

In addition, you may nominate anyone shown on the Membership Roster starting on page 17.

Do not neglect your voice in our Society. Complete the Nominating form shown on page 23 and send it to your EDITOR no later than February 28.

The names of the nominees will be posted in our next issue. That means printing and mailing of that issue will be delayed at least one week to allow time for receipt of all nominating forms.

THE CZECHOSLOVAK SPECIALIST

(ISSN 0526-5843)

Official Journal of the Society for Czechoslovak Philately, Inc.

A.P.S. Unit 18

VOL. 55

JANUARY/ FEBRUARY

NO. 1, WHOLE NO. 517

Published bi-monthly - \$18.00 per year

Second Class Postage Paid at Lancaster, PA 17604

PUBLISHED BY: THE CZECHOSLOVAK SPECIALIST

1511 CLEARVIEW AVENUE, LANCASTER, PA 17601-4305

POSTMASTER: Send address changes to

THE CZECHOSLOVAK SPECIALIST, 1511 Clearview Ave., Lancaster, PA 17601

Editorial Staff

Managing Editor: Mirko L. Vondra, 1511 Clearview Ave., Lancaster, PA 17601

Assistant Editor: Gerald van Zanten, P.O. Box 159, Napier, New Zealand

Foreign Depart. Editor: Henry Hahn, 2936 Rosemoor Lane, Fairfax, VA 22031

Special Projects Editor: Phillips Freer, Apartado Postal 646, Oaxaca, Oax, 68000, Mexico

Advertising Manager: R. T. Cossaboom, Jr., Box 332, Scott AFB, Ill 62225

Elected Officers

President: Ludvik Svoboda, 4766 South Helena Way, Aurora, CO 80015

Vice President: Jaroslav Verner, 8602 Ewing Drive, Bethesda, MD 20817

Secretary: Jane Sterba, 6624 Windsor Ave., Berwyn, IL 60402

Treasurer: Edwin Lehecka, 217 Hazel Ave., Westfield, NJ 07090

Appointed Officers

Circuit Manager: Ludvik Svoboda, 4766 South Helena Way, Aurora, CO80015

Expertizing Chairman: Charles Chesloe, 8300 South Wolf Rd., Willow Springs, IL 60480

Librarian: Richard Palaschak, 113 Joyes Lane, Dover, NJ 07801-5001

APS Representative: Henry Hahn, 2936 Rosemoor Lane, Fairfax, VA 22031

Printed at Ephrata, PA by Shelley Printing, Lee Weit, President (717) 738-1141

All Officers and Board Members Serve the Society voluntarily and non-gratuitously.

**"THE HUSSITE KING"
GEORGE OF PODĚBRADY
1458-1471**

By Gerald M. van Zanten

Looking at the family trees of the Houses of Luxembourg, Jagiellon and Hapsburg, traditional rulers of Bohemia, we find no trace of George (Jiří) of Poděbrady. That despite the fact he was King of Bohemia from 1458-1471 and one of the few really gifted political leaders in Czech history. How then do we account for this "outsider" having become King of Bohemia and what do we know about him? Let me shed some light on this Central European King of the 15th century, who was born in 1420. (see Fig. 1)

Our story commences in the town of Poděbrady, not a pretty town, situated some 50km (31 miles) east of Prague. The town was in those days an important posting-stage on the old road from Prague to Moravia, growing around its fortress, some 577 ft. above sea level. Except for being well known as a spa center since 1908, its only real claim to fame is that it was the birth place of George of Poděbrady. In the main square, Náměstí Jiřího, on the right bank of the Labe (Elbe) River stands his coppergreen equestrian statue. On the 4 Kčs value of the Towns and Castles set (see Scott NO. 224, Pofis No. 311).

In the year 1440, when George was about twenty years of age, the widow of King Albert of Hapsburg, Queen Elizabeth, gave birth to a son on February 22; the future King Ladislav Posthumus, the rightful ruler of the land, according to the views of those who maintained the hereditary character of the Bohemian throne. But there were also different views.

After much intrigue, as well as political maneuvering, the Utraquist party recognized as one of its leaders George of Poděbrady who, in 1452 as a Utraquist himself, made the memorable declaration that he would to his death remain true to the communion in both kinds.

During the brief life of King Ladislav (who died of the Plague on November 23, 1457, not yet eighteen years old) George of Poděbrady had already been entrusted with the administration of Bohemia since October 1451.

On the death of Ladislav, several princes as well as kings raised claims to the Bohemian crown. The Diet which was to elect the new king assembled at Prague on February 27, 1458 and, on March 2nd, George of Poděbrady was unanimously chosen as King of the Estates.



Fig. 1



Fig. 2



Hájen Museum, Czechoslovakia, inv. drawing 1879, 30 x 42,6 cm

Standard Bearer
of King George of Poděbrady

Fig. 3

This was enthusiastically received by the population and on May 7, 1458 George was crowned in St. Vitus Cathedral.

Owing to his statement of 1452, referred to earlier, he was from that day on ward at odds with the Holy Sea. He was threatened with excommunication and given 180 days in which to make submission in person to Rome.

His popularity and successful policy at home had secured Bohemia against all foreign enemies. Peace and order were maintained and the prosperity of the country had also greatly increased. It was hoped that perhaps the days of Charles IV were returning (see my article in the Sept/ Oct 1992 Specialist.)

Around 1465 many of the great Bohemian nobles who had remained Catholics came out in opposition to the King by forming an alliance against him. The following year George made a final attempt at compromise with the Holy Sea. But his envoy, not an ambassador but a simple messenger, carried the King's letter to Rome. He was publicly denounced in the original Latin: "Qumodo es tu bestia audax in praesentia nostra nominare eum regem, quem scis damnatum haeriticum ab ecclesia Romana. Vadas ad furcas cum haeriticum ribaldo tue" ("An audacious beast and ribald heretic"). At this point George was formerly excommunicated on December 23, 1466. He was deposed from his rank as King of Bohemia and all Catholics were forbidden to obey him. He now had to defend himself against attacks from the fanatical Catholics of Breslau, as well as against the German population of Lusatia. (see Fig. 3). The German Emperor Frederick and King Matthew of Hungary turned against him.



Fig. 4

With his excommunication, George countered with a highly original as well as interesting project, which he had nurtured since 1464, for a League of European Princes which has sometimes been claimed as the first germ of a League of Nations.

His idea was to bring together Bohemia, Poland, Hungary, France, Burgundy and Venice with the object of removing the Turkish question from the lands of the Holy Sea.

There was to be a General Council for church reform, from which the Papacy would be excluded. The King of France was to be the Head of this Union. The above mentioned treaty on the establishment of Peace throughout Christendom has been the subject of a Czechoslovak stamp, namely the 1.60Kčs value of the 1964 UNESCO set (see Fig. 4). The stamp portrays George of Poděbrady, a capital letter G with the double tailed Bohemian lion and a golden sun radiating from its center and the text CULTUS PACIS and PROJECTUS GEORGEII REGIS BOHEMIAE 1464-1964, thus clear-

ly commemorating the 500th anniversary of the decisive step taken by George for the realization of this project in the Spring of 1464.

For the PRAGA 88 World Stamp Exhibition the same design was used again, this time in the form of a miniature sheet with four pictures of the same stamp and with text in Czech along the left side. Translated, it reads, "Peace Project of the Czech King George from the years 1462-1646." Below the Latin inscription, the Czech text reads: "Because we know well that . . . we cannot achieve . . . anything more glorious for our honor than the aspiration of truly just and lasting peace, unity and love between nations . . ."

The portrait is presumably that of King George.

The sheetlet was sold only to Exhibition ticket holders. (see Fig. 5).

The Peace Plan Project as well as the Union, which was to have been a defense alliance against Turkish threats, unfortunately could not be realized due to lack of support in the context of the prevailing situation in Western Europe at the time.

The questions of Germany, Hungary and the danger of a Turkish invasion took up much of the time that was left to George. In 1468, war broke out and King Matthew occupied a large part of Moravia and extended his raids into Eastern Bohemia. On May 3, 1469, Matthew was proclaimed King of Bohemia by his adherents. However he was unable to secure a hold on the entire country for any length of time. All this put an end to the well-intentioned designs of George of Poděbrady, something he had entertained during his whole life.

Fig. 6 shows George of Poděbrady in a painting by Mikolaš Aleš picturing him dictating terms of peace to the Hungarian King Matthias Corvinus at Ouhor, 1469 (A small detail of this was used for the 1000 Kčs bank note of 1945).

On March 21, 1471 George died of dropsy at the early age of 51, the one and only Hussite King of Bohemia and the last of the truly Czech Kings.

For Bohemia this was an irreparable loss. His brief reign of only 13 years became enshrined in the national memory as one of the great periods in Czech history. He was not a man of great education, and wrote only with much difficulty, but he was a master of state-



Fig. 5



Fig. 6



Fig. 7

scraft.

He was succeeded by members of the Polish royal family of the Jagiello dynasty.

Here are some factual observations to be recalled:

1. George's daughter was married to Matthias Corvinus, King of Hungary.

2. The chateau and church of St. Peter and St. Paul 1480-1488 in Mělník were financed from the bequest of Queen Johanka of Rožmitál, widow of George.

3. The sons of King George, after the death of their father, assumed the title of Dukes of Münsterberg, and shortly afterwards accepted the Roman Catholic creed.

4. The 30h stamp (Scott no. 854) in the National Exhibition of Archived

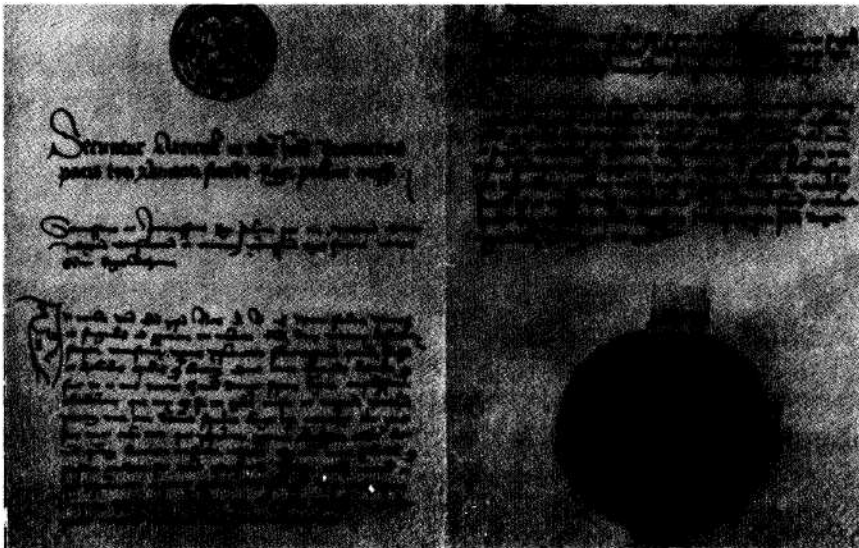


Fig. 8

Documents set of 1958 shows George of Poděbrady and his seal. (see Fig. 7).

5. It is also interesting to note that more than one third of the 23 articles contained in his Project were devoted to his endeavor to secure an everlasting Peace. (see Fig. 8).

Owing to the complexity of this period in Czech history, this is only a brief outline of the "Hussite King," who was summed up by Dr. Kamil Krofta in "A History of the Czechs and Slovaks" by R.W. Seton-Watson as follows: "Although there was within him none of that sacred passion for the Hussite cause which had inspired the Czech "warriors of God" in the preceding era, he had nevertheless been reared in so Hussite an atmosphere that it proved impossible to induce him to purchase the religious unity of the Czech state and its reconciliation with the Church by any surrender of the fundamental principles of Hussitism or a denial of the great Hussite past. On the contrary, he assisted his nation to defend, in face of practically the whole world, the spiritual and moral heritage of the Hussite movement - a movement which, though it had not made the life of the nation more comfortable or easy, was certainly richer in content and more characteristic than the life of the majority of nations of that day"

Page 94 of the June 1964 Specialist has an earlier article by Frank J. Kosik on this subject.

References:

1. The Universal Peace Organization of King George of Bohemia, A Fifteenth Century Plan for World Peace 1462/1464. by Publishing House of Czechoslovak Academy of Sciences 1964.
2. Bohemia; an Historical Sketch
by Count Franz von Lützow.
3. A History of the Czechs and Slovaks
by R.W. Seton-Watson.
4. Czechoslovak Life magazines.
5. Welcome to Czechoslovakia magazines
6. Renaissance Art in Bohemia
by various authors.
7. Fodor's Czechoslovakia.
8. Nagel's Czechoslovakia.

SPECIALISTS WANTED

We are pleased to announce that the 1990 and 1991 SPECIALISTS are being bound and will be distributed to our patron members by book mailings in the near future. In addition, more back issues from previous years will also be bound and will be available for sale. Watch for announcement in our next issue.

In the meantime, certain back issues which have been prepared for binding cannot be bound because, in each instance, one particular issue is missing. If anyone has any of the following issues on hand and is willing to donate them to our Society, we would be very grateful. The missing numbers are:

April 1952; April 1953; June 1960; June 1961; Sept. 1961; May 1963; Nov. 1963; Sept. 1971; June 1974.

Please send any or all of the above to the editor, Mirko Vondra, 1511 Clearview Ave, Lancaster, PA 17601

CURIOSITIES OF THE THIRD AIRMAIL ISSUE ERA

by *Vladimir Bubák*

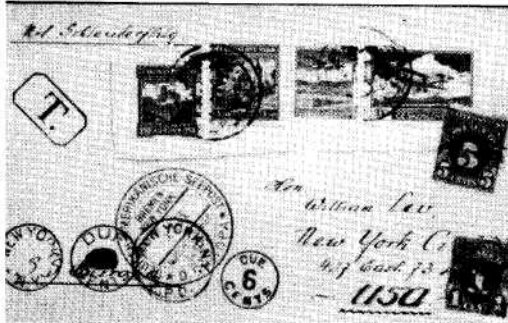


Fig. 1



Fig. 2

In the nine year period from 1930 to 1939 of the Third Airmail Issue's validity, air transportation evolved at a fast pace resulting in many interesting items designed to please specialized collectors.

In the years from 1929 to 1935, large transatlantic ships like the Bremen, Europa and Ile de France had installed catapults. This allowed aircraft to take off from the ships 1,600 kilometers from shore and deliver mail much faster, long before the ship reached port. This expediting of mail ended due to the inception of the dirigible like the Graf Zeppelin and the Hindenburg.

As we know, Czechoslovakia never participated in this mode of mail transport. Nevertheless covers with the cachet of catapulted flights are known to exist. These are mostly covers with mixed Czech-German franking. The mail was sent from Czechoslovakia to a postoffice in Germany which then forwarded it by catapult mail. It is also possible to find Czech-Austrian, Czech-Hungarian and

Czech-Swiss mixed postage. Alternatively it was possible to send a letter to the postmaster of the ship requesting to have the enclosed letter catapulted. Fig. 1 illustrates one such interesting cover. But in this particular instance, the postmaster of the ship refused, in accordance with rules and regulations, to catapult it and it was delivered as regular mail. When it arrived in New York, six cents of postage due was added. Note that the postal clerk had postage due stamps already pre-stamped as is evident from the fact that a rubber imprint is already on the stamp and does not extend on to the cover itself. This nice piece belongs under Navy Post rather than Air Mail.

Fig. 2 illustrates an interesting item under Balloon Post with mixed Belgian - Czech franking. Balloon Belica, piloted by multiple champion balloon racer Ernest Demuyter, (balloon races were very popular at that time) took off on July 5, 1936 from Brusells for a long distance flight over Europe. The next day the balloon crossed the Czechoslovak border north of Moravská Ostrava. At that same moment, a police aircraft took off from the airfield at Dolní Benešov and forced the balloon to land in the Těšín region. For this flight, a special card was prepared with a red cachet. The crew dropped 345 pieces of this mail in Haelen, but most of it was on board at the time of the forced landing. A 50h stamp with the portrait of President Edward Beneš was affixed to some of the remaining 3,000 cards. With the postmarks "Český Těšín - 10 VII 36 18", they were returned to Belgium, this time by train.

When Ernest Demuyter was preparing for his next race, he remarked to a reporter of the newspaper *Národní Listy*, "I hope I won't be forced by one of your aircraft to have another beer in Moravská Ostrava!"

Even though these balloon cards exist in significant numbers, they still belong among some of the scarce aerophilatelic curiosities.

The last cover is so unique, we are showing both sides of it. (see Fig. 3 & 4). Sent from Praha 1 on June 3, 1939, the cover obviously was not flown to Genoa, Italy, but went by train and bears an excellent collection of train hand cancels en route Brennero-Verona-Milano-Genoa. The cover reached its destination the next day, on June 4, possibly at the same time it would have reached it by plane. A 30h violet airmail stamp used on cover is always interesting, but this cover offers a single such stamp on the front and a block of nine on the reverse side in addition to a wonderful tourist's trip across the Alps.

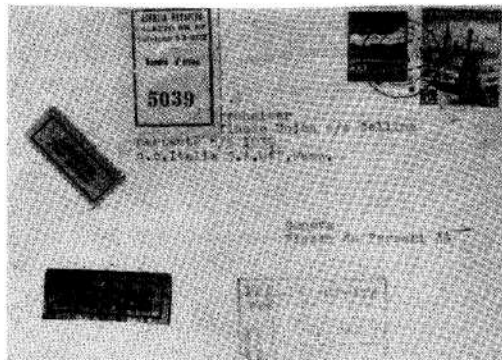


Fig. 3

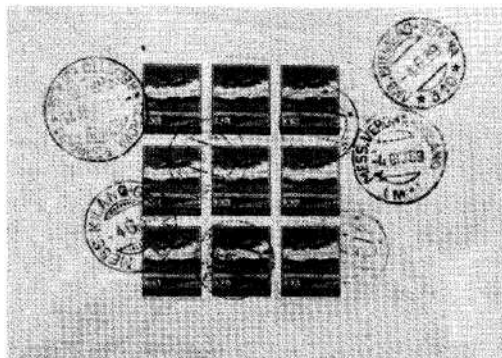


Fig. 4

A CLOSER LOOK AT A FEW MUSIC STAMPS

by *Herbert Moore*

(Editor's Note - This article is reprinted from the Global Stamp News, August 1992, by permission of the author and the publisher and edited specially for this publication.)

Herbert Moore is a retired teacher of high school history who has been a music lover most of his life. Having a substantial collection of records and compact discs, he has made pictorial layouts of some of his stamps for "Opera News", "Musical America" and "Musician." He took up free-lance writing in his retirement and has had essays published in the New York Times and stories in major philatelic periodicals as well as regional magazines. For the past nine years, he has produced classical music programs on two of his local radio stations in the Carmel, N.Y. area.

Readers may obtain a free copy of Global Stamp News by writing to their Circulation Department, G.S.N., P.O. Box 97, Sidney, Ohio 45365).



Fig. 1

As a music lover, I've learned the difference between listening to music and hearing music. As a stamp collector, I've also learned the difference between looking and seeing.



Fig. 2



Fig. 3

Just for the fun of it, take a look at the three Czech stamps that illustrate this article. What do you see? That, plus the knowledge that these are music related stamps.

Czechoslovakia has produced some of the most ornate stamp designs in the past 30 years. Many are quite attractive, often quite colorful, and frequently overloaded with design.

Scott No. 1366 was issued in 1966 for the 70th anniversary of the Czech Philharmonic. The basic color scheme is gold and black. As you look at the design, I think you'll be able to see lettering which identifies this anniversary. (see Fig. 1)

Now take a closer look at the background. In addition to hints at some of the instruments of the orchestra, you'll also find the following names: Bach, Tchaikovsky, Beethoven, Haydn, Dvorak, Janaček, Suk, Smetana, Mozart, Franck, Martinu and Debussy. The most recognizable names make up the staples of any major orchestra's repertoire. A couple of the less familiar names are the most frequently performed Czech composers.

Speaking of familiarity, more or less, let's take a look at Scott No. 1612. This is the most intriguing and the most frustrating of the three. (see Fig. 2).

It was issued in 1969 for the 50th anniversary of the Brno Conservatory of Music. That information can be gathered from the ribbon entwining the harp. Would it surprise you to know that this stamp also includes the names of 28 musicians?

To find them, take a close look at the body and feathers of the eagle at the right. I won't burden you with the names, mainly because only two of them, the pianist Rudolf Firkusny and the composer Leos Janaček, are really well known outside Czechoslovakia. The other 26 apparently aren't too well known at home either! Over the years I've corresponded with the Czech embassy in this country, as well as the Czech postal administration and the Czech Music Information Center in Prague in an attempt to get some biographical data. They've sent me information on some of these men and women, but for the most part this one appearance of their names seems to have been their version of 15 minutes of fame.

By the way, Rudolf Firkusny, who turned 80 in February 1992, is one of the most highly esteemed pianists of our time. He lives today in Hyde Park, right up the road from the home of Franklin D. Roosevelt.

Finally, let's turn to Scott No. 2604, issued for the Prague Spring Music Festival of 1986. In addition to a lot of random musical symbolism, a close look at the two pages of sheet music will show up the following: on the left, the names of Dvorak, Suk, Janaček, Mozart, Bach and Beethoven; and on the right, Smetana, Martinu, Tchaikovsky, Haydn and Shostakovich. (see Fig. 3).

This also comes in a booklet of 3, with the stamp pictured on the booklet cover. But there the names are really illegible. Now that you've got the idea, try a look-see yourself. Czechoslovakia abounds in stamps that are concerned with musical themes.

WANTED

Scott 624 Types II and III (Emma Destinn) as described in issue of October 1988.
Herbert Moore, 6 Everett Rd., Carmel, NY 10512

AN EXTRAORDINARY USE OF POSTAGE DUE

by Henry Hahn

While enjoying a Sunday visit a the philatelic bourse in Prague, I chatted with an old acquaintance and well known collector, Ing. Hynek Ordrášek who presented me with the cover shown below.



The cover was posted on September 25, 1992 at Prague 25 and bears 1 Kčs postage, which was the correct domestic rate on that date (This rate has since changed). The letter is addressed to Prague, but for some reason the letter could not be delivered - the addressee was apparently unknown. The reverse of the letter carries a postman's notation (adresát neznámý, i.e. addressee unknown) and a Prague 8 postmark dated the following day. Since the letter bears no return address, it was sent to Czechoslovakia's Dead Letter Office, which is located in Trnava, Slovakia and apparently given the sequence number 91701. There the letter was opened as evidenced by the red closure label (on the side) which reads (in Slovak) "Postova ohlasovna a ulozna Trnava URADNE OTVORENE - Zaucelom zistenia obostelately" (Postal station and depository in Trnava OFFICIALLY OPENED for purpose of establishing sender). The sender was apparently determined (Ing. Jiří Kolena in Prague 3), the address written on the front of the cover, and a hand stamp(center bottom) applied calling for collection of 1 Kčs from the sender.

A 1 Kčs stamp (recent European Tennis Championship issue) was applied, rubber stamped DOPLANĚ (POSTAGE DUE), and an additional date stamp applied reading October 2, 1992. The return addressee was also identified by a rubber stamp reading Odošela (Sender). The letter was then delivered to the sender who presumably paid the postman the 1 Kčs.

It may be assumed that in the past, when Postage Due stamps were still used and valid in the ČSFR, a postage Due might have been used. However, the author is not certain of this. In any event, this is clearly not a true Postage Due usage, since the two 50h Charley Chaplin stamps were sufficient for coverage of the domestic rate. On the other hand, the 1 Kčs charged for the service of ferreting out the return addressee, and mailing the "lost" letter to him appears to be a bargain. I wonder if the rate for that service has not risen to 4 Kčs as has the domestic rate.

We truly appreciate Ing. Ondrášek's gift and education and only wish that the USPS might offer a similar service.

Continued from page 1

Do not delay. Leave us some time to digest your comments and get back to you if necessary.

This being an odd-numbered year, it is time for nominations to our Board of Directors. For more details on the subject, please refer to page 2 of this issue.

Because the work schedule does not permit him to devote the time that he feels is needed, Jack Benchik is turning the management of the sales and exchange circuit to me. This change is effective immediately, so if you have any questions, need some circuit books, want to sign up to be on the circuit mailing list or have any other circuit business, please contact me at 4766 South Helena Way, Aurora, CO 80015.

Finally with regard to the theft of two of Czechoslovakia's greatest rarities from the Hans Klein exhibit, there is not much good news to report. (see Mar/Apr 1992 SPECIALIST, page 1). I have written to both A.P.S. and F.I.P. expressing our displeasure with the lack of support or activity in trying to recover the items or finding out what happened to them. APS contacted me and reported they had brought the loss to the attention of the appropriate FIP agencies and individuals. They also instigated the inclusion of the loss in the FIP quarterly FLASH report going to all FIP members. They feel that this is about all they can do. I am extremely disappointed. Nothing has appeared in their publication THE AMERICAN PHILATELIST and the actions that they took occurred late in September 1992 - eight months after Mr. Klein's January 10 letter notifying them of the loss. This kind of response to an APS Life member's cry for help is nothing to be proud of. As for FIP, they finally sent Mr. Klein a curt reply in October that the matter is being investigated. This is the same thing that PHILANIPPON told him back in February. He has not heard further from either of them as of Nov. 30, 1992. I therefore can only reach one conclusion: I strongly urge you to think twice before you participate in an FIP-sponsored exhibition! Or, to put it another way - Exhibit at your risk!

HENRY SAMEK, JR.

1914-1992

We regret to inform our membership of the passing of Henry Samek, Jr., member no 975. He expired at his home at 138 Burlington Ave., Paterson N.J. on November 23.

Mr. Samek was a member of our Society since the late 1970's and had served on our Board of Directors for several years. In addition, he served as member of Lodge 211 of the Czechoslovak Society of America.

Born in New York City, he lived in Highland Falls, N.Y., then in Clifton, N.J. and finally in Paterson, N.J.

He was robust, energetic and colorful, with a variety of far-flung interests.

Surviving are his wife, Albina; two sons, Henry and Eric; and sister, Mrs. Ann Trinhoff, eight grandchildren and a great grandchild.

The Society mourns the demise of a true friend of philately and extends his widow and family its deep sympathy and sincere condolences.

Charley's Chapter

SCOUT COVERS IN AN AUCTION

by Charles Chesloe

One day last year I received an auction catalog from H.R. Harmer in London for their auction of July 21, 1992.

What especially caught my eye were two Czech Scout covers dating from 1918. One cover which was supposedly sent Express Mail is franked with a 20h Austrian Karl issue of 1918 which makes it 40 hellers short on postage. (The Express letter rate was 60 hellers.) It is franked by both the 10h and 20h Scout issues and cancelled "Pošta Skautu 19-IX-1918." It originally shows most likely a Sudetenland cancel "Weisse 16-XI-18" The original cover with the Austrian 20h Karl issue is genuine. The two genuine Scout stamps 10h and 20h were added and cancels "N.V." and "Pošta Skautu" appear to be forgeries. The text "Dopis od Skautu" and "Převzal" are definite forgeries. This cover is lot 183 and was estimated at 250 British pounds.



The other cover was sent Registered mail from Trešt and is properly franked 45 hellers-the correct registry fee. However, the genuine Scout stamp was added and the Scout cancels applied are identical to those which are on the previous cover. This one is shown as lot 185 and is estimated at 300 British pounds.

Both covers show the expert mark of "Gilbert". But as we now know, the "Gilbert" mark has been appearing on a lot of forged and highly questionable material lately. It is my belief that his mark has been secured by parties unknown at this time and they are using it to peddle a lot of forged material.

One should use special care and even obtain the advice of a second expert - one currently acknowledged as such in this area. Scout stamps and Scout cancels are particularly suspect these days as more and more of them are coming to light at shows, exhibits, collections and auctions.

END OF THE OVERPRINTS

Czechoslovakia declared its independence on October 28, 1918 and before the end of the year the first Czech stamps were issued. However, there was considerable activity in the way of overprinting both Austrian and Hungarian stamps for use in the new republic. The country had previously been under the Austrian Postal Administration, but the Slovakia section of the country had used Hungarian stamps. Even though Czechoslovakia issued its own stamps the



Fig. 1



Fig. 2

latter part of 1918, stamps of Austria and Hungary remained valid for postal use until the end of February 1919. They were then withdrawn and sent to Prague where they were supposedly overprinted instead of being destroyed. The reason for this was to avoid waste in destroying so many millions of stamps. However, no doubt there was some philatelic motivation behind the expense of overprinting so many stamps, especially in view of the fact that by then Czechoslovakia had already printed its own first issues.

As was already mentioned in the Sept/ Oct 1992 Specialist, one of the earliest overprints is known as the HLUBOKÁ overprint named after the originator, and apparently put into use by a man by the name of Mareš who had a die made and overprinted a total of 42 different Austrian stamps with it. Apparently almost all, if not all, of these overprints were placed on covers which went to philatelists.

Another overprint, of which examples of stamps bearing the overprint are still sometimes available, is the so-called Horner overprint. Josef Horner was a stamp dealer who became dissatisfied with the service provided by Mareš and hired the same engraver used by Mareš to produce another overprint. The same Austrian stamps as were used by Mareš were overprinted with the Horner overprint plus a few more.

There were other overprints on both Austrian and Hungarian stamps but the one of most interest to collectors is found on both Austrian and Hungarian stamps which are designated in the Scott catalogue as semi-postals, numbers B1-B123. The overprint, usually in diagonal form, is "POŠTA ČESKOSLOVENSKA 1919." (see Fig. 1). These overprints are found on 1916-19 Austrian regular postage stamps, newspaper stamps, special handling, air post and postage dues; as well as on Hungarian 1913-19 newspaper stamps, special delivery, semi-postal and postage due stamps. There are a total of 63 Austrian issues and 58 Hungarian issues with the overprint. Some of both the Austrian and the Hungarian overprints are extremely rare. These overprinted stamps were sold in sets at the Prague Philatelic Window at 50% over face value for the benefit of a charity but they were valid for ordinary postal use within the country.

As might be expected, there are some very clever forgeries of these overprints. Collectors who have these overprinted stamps are urged to get a copy of the book FORGERIES OF CZECHOSLOVAK POSTAGE STAMPS by J. Karasek, Z. Kvasnicka and B. Paulicek, which has a section on the overprint forgeries. The book has been translated into English by Jaroslav Verner and Henry Hahn and can be obtained from our Society for a nominal price.

In addition to the above described overprints, there are the "VZOREC" overprints with their very interesting background.

The Universal Postal Union (UPU), with headquarters in Switzerland, receives examples of all stamps issued by member countries. One copy is kept on file at the UPU and other copies distributed to other countries. By this means, many countries have developed extensive postal museums. Czechoslovakia joined the UPU on May 18, 1920.

Stamps sent to the UPU are overprinted indicating that they are "specimen" stamps and, of course, are not valid for postal use. In the case of Czech stamps, the overprint is VZOREC, which is the Czech word for SPECIMEN. (see Fig. 2).

In August of 1920, the Czech Ministry of Posts sent the required number of regular postal issues, special delivery and postage due stamps to the UPU, most of them without the VZOREC overprint. Just how this happened is not known. Subsequently, a rather small supply of the overprints was sold to the Czech Philatelic Club in Prague and divided among the members. Hence the existence of Hradčany regular issues, newspaper, special delivery and postage due stamps, overprinted VZOREC.

-- Phillips Freer

NEW ISSUES

1. On October 6, 1992, the Federal Ministry of Posts and Telecommunications has issued a stamp commemorating the 200th anniversary of the Slovak Learned Society. The 5 Kčs stamp shows portraits of the two founders of the Society: Anton Bernolák and Juraj Fándly - along with facsimiles of their signatures, the oldest coat of arms of the town of Trnava and the text: "200 Výročí Slovenského Učeného Továrištva" (200th Anniversary of the Slovak Learned Society) in the Slovak language.

Designed by academic painter and graphic artist Josef Baláž and engraved by academic painter and graphic artist Martin Činovský, the stamp was printed in the Post Printery in Prague by rotary recess print in brown color combined with a three-colored recess print in ochre, yellow and blue in sheets of 50 stamps. (see Fig. 1).

In conjunction with this stamp, a First Day Cover with a commemorative cancellation was released. Printed by flat plate recess in brown and reddish brown, the FDC shows an engraver's concept of the frontispiece of J. Fándly's work: "The third aspect of home and farming householder" and the text: "eCCe pallaDeM per HanC DesCenDent DoCta opera ex Parnasso Slavico." The capital letters create two chronograms of the work's date of issue-1800.

The stamp is postally valid for both domestic and foreign use from date of issue until officially withdrawn from circulation.

2. On October 19, 1992, the Federal Ministry of Posts issued the first of a new series of stamps dedicated to City Architecture. It is a 3 Kčs stamp showing a panoramic view of the Castle Český Krumlov and its town architecture.

Designed and engraved by graphic artist and engraver Josef Herčík, the stamp was printed at the Post Printery in Prague by rotary recess print in brown combined with recess print in orange and released in sheets of 100 stamps. The picture size is 23x19 mm. There is no First Day Cover accompanying it.

The stamp is postally valid for both domestic and foreign use from date of issue until officially withdrawn.



Fig. 1



Fig. 2

3. Continuing its popular series of "Art on Stamps", the Ministry of Posts announced the issuance on November 2, 1992 of three more stamps commemorating the art of painting.

a-A 6 kčs stamp shows an engraver's transcription of Koloman Sokol's 1934 woodcut called "The Old Rafter". It is part of the collection in the Slovak National Gallery in Bratislava. Engraved by Josef Herčík, the stamp is in black, ochre and brown with a picture size of 40x50mm. It was printed at the Post Printery in Prague by multi-colored flat-plate recess in sheets of four stamps. An accompanying FDC pictures an engraver's drawing made by chalk and coal entitled "Mother With Child" (1940) in black and rose colors. (see Fig. 2).

b-A 7 kčs stamp shows an engraver's transcription of Braque's 1922 painting of "Still Life with a Cluster of Grapes." It is from the collection of the National Gallery in Prague.



Fig. 3

Engraved by Bedřich Housa, the stamp appears in black, ochre, blue, brown and green with a picture size of 40x50 mm. It was printed at the Post Printery by multi-colored flat-plate recess in sheets of four stamps. An accompanying FDC shows an engraver's drawing made by pencil and coal of "Still Life With Apples" in brownish black color. (see Fig. 3).

c-An 8 kčs stamp shows an engraver's transcription of Toyen's 1937 painting "The Abandoned Den" also from the collection of the National Gallery in Prague. Engraved by Bedřich Housa, the stamp is in black, grey, light blue and blue with a picture size of 40x50 mm. It was printed at the



Fig. 4

Post Printery by multi-colored flat-plate recess in sheets of four stamps. The FDC shows an engraver's drawing made by pen and brush of Toyen's 1930 "Komposition" in black. (see Fig. 4).

As usual, the stamps are all postally valid from date of issue until officially withdrawn.

4. And then there is Christmas! For the second year in a row, the Ministry of Posts issued a Christmas stamp, -this one on November 9, 1992. Having a denomination of 2 kčs, it shows a graphic composition of two shepherds with a medieval harp, horn and organ along with the traditional carp and the Star of Bethlehem. It was designed by academic painter and graphic artist Karel Franta and engraved by academic painter and graphic artist Bedřich Housa. (see Fig. 5).



Fig. 5

The stamp is small in size, the picture being only 19x23 mm. It was printed at the Post Printery in Prague by rotary recess print in dark brown combined with four colored recess print in rose, yellow, red and blue in sheets of 100.

There is a First Day Cover with a commemorative cancellation. Printed by flatplate recess in ochre, blue, and brown, it pictures the drawing of a singing angel under the Star of Bethlehem and an organ in the form of two small birds.

As usual, the stamp is valid for both domestic and foreign postage from date of issue until withdrawn from circulation.

WELCOME TO NEW MEMBERS

The below-listed philatelic collectors are cordially welcomed as new members of our Society. Their membership takes effect January 1, 1993 and they will start receiving the SPECIALIST with the first issue of the New Year.

Following this New Members list, we are happy to publish for the information of our members and friends a complete Membership Roster as of the end of 1992. It is arranged in Alphabetical order by last name. In front of that name appears the person's membership number. Between the number and the name there may be a letter symbol "P" which means that person is a patron member. All patron members whose name appears on this Roster will receive a bound volume of all the SPECIALISTS issued during 1991-1992. Binding has commenced in December and hopefully the books will be mailed out sometime during January.

- | | |
|---|---|
| 1649 Don Allen 1201 North Prospect Tacoma, WA 98406 | 1654 California Czechoslovak Club 727 Appleberry Drive San Raphael Drive, Calif. 94903-1205 |
| 1650 John F. Panda 297 Broadway Chicopee, MA 01020 | 1655 R.R. Burger 6541 Quail Crossing Chanhassen, MN 55317 |
| 1651 Carl F. Wolfhagen 4516 Juli Court SE Olympia, WA 98010 | 1656 P. Mondok Kuzmanyho 49 Kosice 04001 Czechoslovakia |
| 1652 Julian J. Hosnedl 285 Dean Road Clarksville, Tenn. 37040 | 1657 D.J. Elden 15 Pueblo Vista Road Santa Barbara, CA 93103 |
| 1653 Michael Myrick 1483 Wood Trail Circle Cordova, Tenn. 38018 | |

MEMBERSHIP ROSTER

- | | | | | |
|-------|--------------|------------------------|----------------------|------------|
| 386 | Adler JW | 6452 Nashville Abe. | St.Louis | MO 63139 |
| 1649 | Allen D | 1201 N. Prospect | Tacoma | WA 98406 |
| 954 | Andrew JA | 28411 Borgona Mission | Biejo | CA 92692 |
| 1060 | Asklund S | Box 5058 | Huddinge 5, Sweden | S1410 |
| 857 | Austin TM | Apartado 10007 | San Jose | Costa Rica |
| 1488 | Backeljauw F | F Timmersmanslaan 39 | Schelle | Bel B2627 |
| 1575 | Bailey M | 3401 Harford Rd. | Baltimore | MD 21128 |
| 1522 | Baran P | Lucni 307/12 | Litvinov-Janov | CZ 43542 |
| 1597 | Barber K | 1017 Falgarwood Dr. | Oakville, Ont Canada | L6H1N |
| 1558 | Bardelli JL | Rue Des Panoyaux 54 | Paris, France | 75020 |
| 1032 | Bardoun FJ | 278 Lowrie Blvd | Northfield | OH 44067 |
| Hon | Bar-Nadav T | 38-20 Berdan Ave | Fairlawn | NJ 07410 |
| 968 | Behnke RJ | 1027 Purdue St. | San Leandro | CA 94579 |
| 427/P | Benchik J | P.O. Box 555 | Norte Dame | IN 46556 |
| 1244 | Bennett RL | 301 Phelps Rd. | Madison Hgts | VA 24572 |
| 1531 | Beranek J | Smetanovo Namesti 1049 | Litomysl | CZ 57001 |
| 1457 | Bieniedki H | Box 100 | Granite City | IL 62040 |
| 1400 | Bilek R | 1515 S Highland | Arlington Hgts | IL 60005 |
| 1478 | Bishop D | 16434 Shamhart Dr | Granada Hills | CA 91344 |

THE CZECHOSLOVAK SPECIALIST

| | | | | |
|--------|---------------|--------------------------|---------------------|---------------|
| 1471 | Blaha P | P.O. Box 464 | Brno 2 | CZ 60200 |
| 465 | Blastik C | 3006 S Kildare Av | Chicago | IL 60623 |
| 1609 | Blaustein DI | 8924 Knox Ave | Skokie | IL 60076 |
| 934 | Blazek J | 5210 River Rd Apt. 2008 | Keizen | OR 97303 |
| 407 | Blinn EF | P.O. Box D-6 | Cape May Point | NJ 08212 |
| 1564 | Bordwell HA | P.O. Box 446 | Rochester | NY 14602 |
| 722 | Boubelik CF | P.O. Box 40 | Canon City | CO 81215 |
| 1513 | Bowling MW | 1334 Normandy Road | Duncan | OK 73533 |
| 1621/P | Brainard C | 20 Palmetto Ave | Marlton | NJ 08053 |
| 1301 | Brichacek RJ | 3512 36th St. | Columbus | NE 68601 |
| 586p | Brincil R | RD 1 | Cambridge | NY 12816 |
| 1639 | Bristow M | P.O. Box 8145 | State College | PA 16803 |
| 1239 | Brown DS | 158 San Brancid Road | Salinas | CA 93908 |
| 1642/P | Bruce DW | 417 Guildwood Ct | Burlington , Ont | Canada L7N1Y |
| Hon | Bryant WB | 3635 7th Ave Apt 7-D | San Diego | CA 92103 |
| 1364 | Bubak V | 22 Murray Hill Ct | Kitchener ; Ont | Canada N2E1N |
| 1620 | Bush CW | 1000 Davis Road | Havre de Grace | MD 21078 — |
| 1618 | Bush JE | 8252 Barningham Rd | Richmond | VA 23235 |
| 1595 | Carlton Rs | 8249 Four Worlds Dr | Cincinnati | OH 45231 |
| 1579 | Carone JI | P.O. Box 681541 | Schaumburg | IL 60168 |
| 1644 | Casel S | 221 Mohican St | Lester | PA 19029 |
| 1295/P | Caton TE | P.O. Box 2399 | Wheaton | MD 20915 |
| 1439 | Cermak V | Am Haderner Winkel 7 | Neuried, Germany | 8027 |
| 1046/P | Cervený JF | 79 W Monroe St. Rm 1000 | Chicago | IL 60603 |
| 509p | Chesloe C | 8300 S Wolf Rd | Willow Springs | IL 60480 |
| 1606 | Chulp B | 57175 Hillcrest Dr | Yucca Valley | CA 92284 |
| 949 | Chott HP | 306 Bartram Rd | Riverside | IL 60546 |
| 1631 | Cibulka RH | 19121 3rd NW | Seattle | WA 98177 |
| 1183/P | Ciganek FR | 1 Reed Court | Chestertown | MD 21620 |
| 1617 | Cisler J | E Krasnohorske 44/16 | Praha 1 | CZ 11001 |
| 1018/P | Collins Cr | 19 Empire Place | Greenbelt | MD 20770 |
| 984 | Cook LF | 20091 Old Santa Cruz Hwy | Los Gatos | CA 95030 |
| 1480/P | Corrinet MS | Box 1305 | Benica | CA 94510 |
| 936/P | Cossaboom RT | Box 25332 | Scott AFB | IL 62225 |
| 1586 | Crawford D | 3859 De Bullion | Montreal, Ont | Canada H2W2E2 |
| 1319/P | Cross B | 18298 Hunt Road | Strongsville | OH 44136 |
| 549 | Cuhaj G | 31-50 33rd St | Astoria | NY 11106 |
| 801/P | Culin RW | P.O. Box 8010 | Akron | OH 44320 |
| 1136/P | Dailey RF | 4125 N Colonial | Portland | OR 97217 |
| 1508 | Danek F | 25-30 14th Place | Astoria | NY 11102 |
| 1593 | DavidovicR | 2110 NE 211th Terrace | N Miami Beach | FL 33179 |
| 1546 | Demetriade D | P.O. Box 10182 | Detroit | MI 48210 |
| 1643 | Derry MJ | 409-285 Loretta Av S | Ottawa , Ont | Canada K1S5A5 |
| 1241 | Dissen EH | Bestevaersraat 9 | AL Haarlem, Holland | 2014 |
| 1040 | Dolejs RA | 8008 West 31st St | N Riverside | IL 60546 |
| 1384 | Drost GT | 820 S Burton Place | Arlington Hgts | IL 60005 |
| 1541 | Dubensky TW | 455 Gilman Ave | Weed | CA 96094 |
| 1583 | Eckman PG | 620 N Hoover | Los Angeles | CA 90004 |
| 1502 | Evan JE | P.O. Box 2533 | Clearwater | FL 34617 |
| 1120 | Failmezger GR | 3502 Cobb Drive | Fairfax | VA 22030 |
| Hon | Faires B | RT 85 Box 4255 | Livingston | MT 59047 |
| 1103 | Ference G | 224 Monticello Ave | Salisbury | MD 21801 — |
| 1099 | Fischer | 235 Gosford Blvd Apt 807 | Downsview , Ont | Canada M3N2W3 |

| | | | | |
|--------|----------------|-------------------------|----------------------|----------|
| 1437 | Fisher R | P.O. Box 2072 | Northlake | IL 60164 |
| 1312 | Florian DF | 2101 Sheffield St | Kingsport | TN 37660 |
| 1640 | Fojt M | 1700 Old Columbia Pike | Silver Spring | MD 20904 |
| 1585 | Fox WL | 195 St George Lane | Williston | VT 05495 |
| 1602 | Gentry CS | 1331 Plass Ave | Topeka | KS 66604 |
| 1515/P | Freer PB | Apartado Postal 646 | Oaxaca , Oax Mex | 68000 |
| 1506/P | Friedrich EW | MidCliff Ruggles Ave | Newport | RI 02840 |
| 1540 | Fritz RJ | 529 N Lombard Ave | Lombard | IL 60148 |
| Hon | Fritzche W | P.O. Box 8 | Canandaigua | NY 14424 |
| 1489 | Garancovsky FA | 8459 Four Seasons TR | Poland | OR 44514 |
| 1476 | Gauthier PH | 11 Rue Brady | Hull , Quebec Canada | J8Y5L1 |
| 1602 | Gentry CS | 1331 Plass Ave | Topeka | KS 66604 |
| 1550 | George DL | 19410 Cantrell | Little Rock | AR 72212 |
| 1510 | Gilgis JR | P.O. Box G | Fayville | MA 01745 |
| 1570 | Grabowski J | P.O. Box 10916 | White Bear Lake | MN 55110 |
| 1627 | Guido A Dr | 3340 S Oak Park Ave | Berwyn | IL 60402 |
| 1646 | Gulak PA | 11 Lanai Lane | New Platz | NY 12561 |
| 1519 | Gyra J | Vysehradska 116 | Vodochody | CZ 25069 |
| 1612 | Hadley WW | 87 Lancaster Ave | ElkGrove Village | IL 60007 |
| 1155 | Haefelia MA | 7 Empress Lane | Lawrenceville | NJ 08648 |
| 777p | Hahn H | 2936 Rosemoor Lane | Fairfax | VA 22031 |
| 1574 | Hajdu I | 166B Fairgreen Dr | Amherst | NY 14228 |
| 1245 | Hammer JP | Balanstrasse 77 | Munchen 90, Germany | D8000 |
| Hon | Hanl G | Holechova 10 | Praha 5 | CZ 15000 |
| 1050 | Hartman AV | 2112 Hillcrest Rd | Arnold | MD 21012 |
| 1628 | Hlevizos G | 2800 28th St Suite 323 | Santa Monica | CA 90405 |
| 1543 | Hovver AH | 411 Deep Wood Cove | Fort Wayne | IN 46845 |
| 1636 | Horacek A | 900 Post Rd #83 | Warwick | RI 02888 |
| Hon | Horechny L | 154 Laurel St | Fairhope | AL 36532 |
| 1652 | Hosnedl JJ | 285 Dean Rd | Clarksville | TN 37040 |
| 1594 | Hotchkiss AC | 203 High St POB 158 | Odessa | DE 19730 |
| 971 | Hrbek F | 25-40 31st Ave | Asoria | NY 11106 |
| 977p | Hruby AA | 3125 West 103rd St | Chicago | IL 60655 |
| 1235/P | Irmmler LO | 207 Mechanic St | Cape May CH | NJ 08210 |
| 1082 | Iskra M | 30 Highland Dr | Wilkes Barre | PA 18705 |
| 1401/P | Jana JL | 65 HarbourSq Suite 3608 | Toronto, Ont Canada | M5J2L4 |
| 1604 | Jandura G | S-3700 Marlow Ave | Blasdell | NY 14219 |
| 159 | Jirousek EJ | 16214 Maplewood Court | Maple Hgts | OH 44137 |
| 1638 | Jolly MJ | P.O. Box 431 | Saddle Brook | NJ 07662 |
| 1552/P | Jones W | 207 Main St POB 152 | Rockland | WI 54653 |
| 1393 | Julsen FW | 8721 Via La Serena | Paradise Valley | AZ 85253 |
| 1039 | Jurak JM | Rte 1 Peterson Lane | Wilmington | IL 60481 |
| 1057 | Jurick Jt | 23627 Welby Way | Canoga Park | CA 91307 |
| 1298 | Kalabza S | 2310 S 61st Ave | Cicero | IL 60650 |
| 1398 | Kanter SA | 282 Wigmore Drive | Pasedena | CA 91105 |
| 1567 | Kaplan Z | 2727 Boston Post Rd | Guilford | CT 06437 |
| Hon | Karasek J | Box 430 | Brno 2 | CZ 60200 |
| 1635 | Karpinsky JR | P.O. Box 101 | Otego | NY 13825 |
| 1097/P | Kashiwagi K | 1347 Roscomare Rd | Los Angeles | CA 90077 |
| 1573 | Kavaligan MS | 252 Henderson Rd | Fairfield | CT 06430 |
| 1212 | Kenyon KH | 558 Hillcrest Dr | Verona | WI 53593 |
| 1614 | Kern CE | 3812 Garrison St NW | Washington | DC 20016 |
| 892 | Kimball J | 203 10th St SE | Washington | DC 20003 |

THE CZECHOSLOVAK SPECIALIST

| | | | | |
|--------|-----------------|--------------------------|--------------------------|----------|
| 1077 | Klasek FJ | 48-50 Atwood St 1C | Hartford | CT 06105 |
| 1448 | Klein B | 1111 N Dearborn Apt 3102 | Chicago | IL 60610 |
| 1213/P | Klein JL | Stoeplaan 9 | Wassenaar CV, Holland | 2243 |
| 840 | Kleskovic PZ | 27 Jay St | Succasunna | NJ 07876 |
| 227 | Kobylka G | P.O. Box 159 | Berwyn | IL 60402 |
| 1495 | Koler TE | 4520 31st Ave NE | Olympia | WA 98506 |
| 1555 | Kolesar JE | 1800 Murstone Rd | Pittsburgh | PA 15421 |
| 1532 | Kolonicna A | Klapy | Klapy 170 | CZ 41116 |
| 1615 | Konrad C | 3902A Iowa Ave | St Louis | MO 63118 |
| 1485 | Kosacky D | 6542 McLynn Ave | Montreal, Que Canada | H3X246 |
| 1461/P | Koschalk R | P.O. Box 114 | Waukegan | IL 60079 |
| 1577 | Kotek JA | 424 Corbin Rd | York | PA 17403 |
| 1591 | Koukl JI | 5013 North Drive | Tyler | TX 75703 |
| 1059 | Kracik J | Postfach 468 | Riehen, Switzerland | CH4125 |
| 932p | Krafka R | 1461 No Euclid Ave | Dayton | OH 45406 |
| 1222 | Kralicek VJ | 232 Buckland Beach Rd | Aukland, New Zealand | |
| 1503 | Krejci L | 2422 4th Avenue | N Riverside | IL 60546 |
| 540 | Krejci OM | 8702 Ridge Road | Bethesda | MD 20817 |
| 1625 | Kunc L | Brunclikova 7 | Praha 6 | CZ 16200 |
| 698 | Kutak R | 227 Elm St | Monroe | NY 10950 |
| Hon | Kuzych I | 7758 Condor Court | Alexandria | VA 22306 |
| Hon | Kvasnicka Z | Capajevovo Nam 9 | Praha 3 | CZ 13000 |
| 1613 | Lacko JM | 1031 W Chestnut St | Union | NJ 07083 |
| 1616 | Larsen J | Molleparkvej 5-20 | Esbjergn, Denmark | DK6715 |
| 1572 | Laube HJ | 5158 S Rutherford Ave | Chicago | IL 60638 |
| 1180 | Lawrence FP | 5016 S Kenneth Pl | Tempe | AZ 85282 |
| 1581 | Lebl M | U Saltovny 20 | Praha 7 | CZ 1700 |
| 1645 | Lederer WJ | 630 Bedford Dr | Crystal Lake | IL 60014 |
| 1115/P | Lehecka EW | 217 Hazel Avenue | Westfield | NJ 07090 |
| 329 | Lindner C | 2536 West 32nd St | Fremont | MI 49412 |
| 167 | Linhart Ec | 1820 S Ridgeland Ave | Berwyn | IL 60402 |
| Hon | Lisy E | 87 Carmita Ave | Rutherford | NJ 07070 |
| 969 | Luckey W | N6292 Schraven Circle | Fond Du Lac | WI 54935 |
| 1647 | Lutz JA | 728 Woodstock Rd | Quechee | VT 05059 |
| 1111 | Major RM | P.O. Box 4074 | Arlington | VA 22204 |
| 1588/P | Malec J | 17600 Detroit Av 411 | Lakewood | OH 44107 |
| 1542 | Malkovsky CF | 6758 Larchmont Drive | Mayfield Hgts | OH 44124 |
| 1433/P | Mallin A | 6509 N Campbell Ave | Chicago | IL 60645 |
| 1007 | Martin Eh | 5221 Nantucket lane | Anaheim Hills | CA 92807 |
| 1394 | McCosh B Ms | 4016 Gresham St #B-4 | San Diego | CA 92109 |
| 1134 | McDougall AB | Cedar Holl Road | Bedford | NY 10506 |
| 1562 | Medbal J | 1061 Huntington Dr | San Jose | CA 95129 |
| 906 | Melamed PH | 4065 Dixon Drive | Hoffman Estates | IL 60195 |
| 804/P | Meredith JE | 517 Ave Campo | Newport Beach | CA 92660 |
| 1571 | Mesaros MP | 222 N Saginaw Suite 2 | Midland | MI 48640 |
| 1351 | Mihaly H | 31 Hampton Drive | Freehold | NJ 07728 |
| 1417/P | Miller RG | 19741 Potomac Lane | Hintington Beach | CA 92646 |
| 1436 | Morgan M/Galitz | 19 W Flagler | Miami | FL 33130 |
| 1520 | Morovics T | U Stadionu 957 | Kurim | CZ 66434 |
| 1171 | Morris M | 401 Rulles St | Prince George, BC Canada | V2M3P7 |
| 1653 | Myrick M | 1483 Wood Trail | Ciecle | TN 38018 |
| 1626 | Nassan H | 146 Hudson Rd | Falmouth | VA 22405 |
| 1143/P | Neumann F | Oberstrasse 18F-VT11 | Hamburg, Germany | D2000 |

| | | | |
|--------|-----------------|--------------------------|----------------------------|
| 1569 | Norbjerg M | Laeskovvej 227 | Bjaeverskov , Denmark 4632 |
| 1278 | Novak R | 2381 Masch St | Warren MI 48091 |
| 1438 | Oakely EC | 7057 Salisbury Av #308 | Burnaby, BC Canada V2E2Z8 |
| 1630 | Oceretko J | P.O. Box 777 | Adrian MI 49221 |
| 1592 | Olsen DL | 6425 Corlos Court | Anchorage AK 99504 |
| 1580 | Ondrackova L | P.O. Box 7 | Predmesti CZ 75124 |
| 1355 | Osamu F | 3248 Kikko Moriyamaku | Nagoya City Japan 463 |
| 1608 | Paces M | 1611 Central St | Yorktown Hgts NY 10598 |
| 1328 | Page JE | Porto Colon 12 Centro 3B | Madrid, Spain 28924 |
| 1493 | Palaschak LJ | 7525 Mustang Rd | Colorado Sprgs CO 80908 |
| 1382 | Palaschak R | 113 Joyes Lane | Dover NJ 07801 |
| 1650 | Panda Jj | 297 Broadway | Chicopee MA 01020 |
| 412 | Parker J | POB 428 254 N Reeder | Coupeville WA 98239 |
| 1605/P | Pawlucki RM | P.O. Box 2594 | Kirkland WA 98083 |
| 1629 | Picha RS | 999 No Holliston | Pasadena CA 91104 |
| 945 | Placko JM | 2282 Balmoral | Union NJ 07083 |
| 847/P | Pojeta J | 1492 Dunster Lane | Rockville MD 20854 |
| 379/P | Polivka RM | 1861 Rockspring Pl | Walnut Creek CA 94596 |
| 1428 | Povondra DL | P.O. Box 64 | Tabor SD 57063 |
| 739 | Povondra F | 255 London Terrace | Stratford CT 06497 |
| 1199/P | Prince JJ | 1121 Springbrook St | Corona CA 91720 |
| 591 | Prochazka JJ | 2610 Jerald Drive. | Baltimore MD 21234 |
| 1584 | Radanovitch EE | 2516 Chandler Rd | East Bellevue NE 68005 |
| 1556 | Rauch M | Knipprather Str 19 | Monheim, Germany D 4019 |
| 538 | Repasky R | 25-60 35th St | Astoria NY 11103 |
| 1648 | Rerucha VJ | 902 Bexley Dr | Perrysburg OH 43551 |
| 1066/P | Riccio DJ | 235 W 76th St | New York NY 10023 |
| 1524 | Rich DJ | 131 Dennlea Road | Fairfield CT 06666 |
| 1441/P | Richmond C | P.O. Box 838 | Coraopolis PA 15108 |
| 1518 | Richter J | Pd Hajom 1086/43 | Dubnica N/V CZ 01841 |
| 1582 | Richter J | Tiada Rijnove Rev 5A | Brno CZ 60200 |
| 1289 | Ripley WD | Box 854 | Beltsville MD 20705 |
| 1603/P | Rogers M | 199 E Welbourne Ave | Winter Park FL 32789 |
| 1599 | Rooney TM | 14929Trinidad Dr | Rancho Murieta CA 95683 |
| 1280 | Rosentrater GL | P.O. Box 3575 | Littleton CO 80161 |
| 1554 | Rushton M Ms | 711 W 57th Ave Apt 108 | Bradenton FL 34207 |
| 1623 | Russell TE | 1833 Briar Ridge Ct | McLean VA 22101 |
| 1560 | Ruzicka PC | 1625 Grove Ave | Berwyn IL 60402 |
| 259/P | Sabol EJ | 427 King St | Woodbury NJ 08096 |
| 975/P | Samek H | 138 Burlington Ave | Paterson NJ 07502 |
| 1563 | Sams PC | 1301 Fox St | Findlay OH 45804 |
| 1009 | Samuels H | 310 N Country Rd | Miller Place NY 11764 |
| 1607 | Savage JM | 300 Faust Rd | Sinking Spring PA 19608 |
| 1170 | Sazama RM | 2200 10th Ave | Levenworth KS 66048 |
| 1641 | Schapelhouman L | 1880 Golden Way | Mountain Vew CA 94040 |
| 1619 | Schaper RJ | 2 Tiffin Dr | Pittsburgh PA 15209 |
| 1561/P | Schneider WK | 11430 Lake Shore Dr | Grand Haven MI 49417 |
| 1567/P | Sebek BA | 3255 Glencairn Road | Shaker Heights OH 44122 |
| 1192/P | Sedlar J | P.O. Box 528 | Vestal NY 13851 |
| 1270 | Sedmak H | 8096 Twilight Lane | Brighton MI 48116 |
| 693 | Serchak GS | 28 Gainsboro Lane | Syosset NY 11791 |
| 1385 | Shaw GB | 12 7596-J Lksde Vil Dr | Falls Church VA 22042 |
| 816 | Sheppard K Mrs | 13 Hall Lane St | St Paul MN 55107 |

THE CZECHOSLOVAK SPECIALIST

| | | | | |
|--------|---------------|-----------------------|-------------------------|------------|
| 1633 | Shigut LK | 22727 Marjorie Ave | Torrance | CA 90505 |
| 1578 | Shoemaker R | 612 Hollen Road | Baltimore | MD 21212 — |
| 273/P | Sisson HA | 5959 Horger St | Dearborn | MI 48216 |
| 1553 | Smithson TL | 2593 W Mple Rdge 37Rd | Rock | MI 49880 |
| 1200 | Sommer IJ | 305 No Lake Rd | Anderson | SC 29625 |
| 1207 | Stacho AE | 10933 Templeton Dr | Philadelphia | PA 19154 |
| 594 | Stehlik CW | 55 E Cedar Ave | Marlton | NJ 08053 |
| 993/P | Sterba J | 6624 Windsor Ave | Berwyn | IL 60402 |
| 868 | Sternasty RS | 1061 Corzon jCircle | Troy | OH 45373 |
| 1146 | Stevens LG | 136 Cynwyd Road | Bala Cynwyd | PA 19004 |
| 1601 | Stopkey WD | 1405 Moss Lane | River Ridge | LA 70123 |
| 444 | Stoyel AJ | 329 Addiscombe Road | Croyden Surrey, England | Cr07LF |
| 1453/P | Strechansky A | P.O. Box 333 | Jersey City | NJ 07303 |
| 1043/P | Stupel K | 29 East 22nd St | New York | NY 10010 |
| 1610 | Stupka J | 1 May NO 18 | Zelezna Ruda | CZ |
| 1119/P | Svatik Es | P.O. Box 53 | Ingelside | IL 60041 |
| 1203/P | Svoboda LZ | 4766 S Helena Way | Aurora | CO 80015 |
| 1464 | Swartz JM | 6320 West Lareod | Chandler | AZ 85226 |
| 1300 | Szafranski AJ | 2443 Rolling Farms Rd | Glenshaw | PA 15116 |
| 1378 | Taborsky E | 708 Saylor county | Towson | MD 21204 — |
| 1632 | Taylor FE | 15 Sea Crest Dr | Narragansett | RI 02882 |
| 1530 | Texl Z | Na Zavadilce 783 | Jaromer | CZ 55101 |
| 1634 | Thomas MD | 7679 W Fremont Ave | Littleton | CO 80123 |
| Hon | Torrey G | 5118 Duvall Drive | Washington | DC 20016 — |
| 1305 | Unwin AM | P.O. Box 1686 | Bellevue | WA 98009 |
| 1116 | Vachuda TJ | 415 Humphrey St | New Haven | CT 06511 |
| 1500 | Vadlejch J | 1700 Dell Avenue | Campbell | CA 95008 |
| 1102 | Valasek H | 9446 Morcado Circle | La Mesa | CA 91941 |
| 1100/P | Van Dam T | P.O. Box 8809 | Anaheim | CA 92812 |
| 893/P | Van Zanten GM | P.O. Box 159 | Napier, New Zealand | |
| 618/P | Verba J | 519 N Kramer Ave | Lombard | IL 60148 |
| 1548 | Verleg JA | 1e Sweelinckstaat 52 | Den Haag, Holland | 2517GE |
| 609/P | Verner JJ | 8602 Ewing Drive | Bethesda | MD 20817 |
| 1529 | Vleck M | Postovni Prihradkal 3 | Hulin | CZ 76824 |
| 1251 | Vogel F | P.O. Box 18341 | Irvine | CA 92713 |
| 1624 | Vojta M | Gruenbergstr 31/DG | Vienna, Austria | A1120 |
| 927/P | Volosin DJ | 178 Flat Meadow Rd | Guilford | CT 06437 |
| 573/P | Vondra ML | 1511 Clearview Ave | Lancaster | PA 17601 |
| 1047 | Vondrak J | 755 Oak St | Roselle | IL 60172 |
| Hon | Vostatek M | Belehradska 271 | Pardubice | CZ 53009 |
| 1347 | Wachovec FJ | STar Rte 2 Box 490 | McArthur | OH 45651 |
| 1413/P | Wheeler WF | P.O. Box 429 | Southport | CT 06490 |
| 1322 | Wilhelms G | Bertolt-Brecht Str59 | Erfstadt 1 Germany | D5042 |
| 1651/P | Wolfhagen CJ | 4516 Juli Ct SE | Olympia | WA 98501 |
| 1557 | Worley N | 2550 Kilmarnock Cres | N Vancouver BC Canada | V7J2Z5 |
| 1611 | Wurm J | 2453 S 4th Ave | N Riverside | IL 60546 |
| 1637 | York EM | 766 Carolina Ave | Reading | PA 19605 |
| 211 | Zaludek EE | 5648 S Massasoit Ave | Chicago | IL 60638 |
| 1409 | Zelek R | P.O. Box 382 | Exton | PA 19341 |
| 1514 | Zerk K | 3703 Monon St | Los Angeles | CA 90027 |
| 1372 | Zid FA | P.O. Box 301 | Westmont | IL 60559 |
| 1622 | Zulueta AG | 1835 Clayton Ct Way | Concord | CA 94519 |

NOMINATION TO THE BOARD

To: The Editor: Mirko Vondra
1511 Clearview Ave.
Lancaster, PA 17601

The undersigned hereby nominates:

Name _____ Member No. _____
to serve as a member of the Board of Directors of the Society for Czechoslovak Philately,
Inc. for a term of six (6) years commencing immediately following election in 1992.

Nominator _____ Member no. _____ Date _____

Nominator _____ Member no. _____ Date _____

(Do not write below this line)

Nomination certified by - _____ Member no. _____
Date _____

RENEWAL OF MEMBERSHIP

\$18.00 - annual dues/Regular Membership
Foreign Members, add:
\$10.00 - Air Mail postage

\$30.00 - annual dues/Patron Membership (includes bound
volume of Specialist for two subscription years)

\$ 3.00 - Youth Membership - under 18 years of age

Contribution _____ Total Enclosed \$ _____

PLEASE PRINT: Name: _____ Membership no. _____
Street: _____
City: _____ State: _____ Zip: _____

Please fill out, cut out, and enclose with payment
Send to the Treasurer: Ed Lehecka
217 Hazel Ave.
Westfield, N.J. 07090

THE CZECHOSLOVAK SPECIALIST

(USPS 808300)
1511 CLEARVIEW AVE.
LANCASTER, PA 17601

— Correct Address Requested —

Second Class
Postage Paid
Lancaster, PA 17604
and additional
mailing offices.