

THE CZECHOSLOVAK SPECIALIST

Official Monthly Journal of the



(USPS 808300)
Society for Czechoslovak Philately, Inc.

Silver Award Interphil '76 — Silver Award Capex '78 — Silver-Bronze Praga '78

A.P.S. Unit 18

S.P.A. Branch 284

Vol. XLV

November 1983

No. 9, Whole No. 434

HORIZONTAL COMB PERFORATIONS IN THE DOVE AND THE LIBERATED REPUBLIC ISSUES

By Ing. Pavel Hirs, CSc. — Translated by H. Hahn SCP

From time to time we hear of the discovery of rare perforations in the otherwise common issues of the DOVE and LIBERATED REPUBLIC. News of such a discovery includes the report by Ing. V. Tolman, CSc. (2). An earlier discovery is mentioned by the editor E. Hirsch in his article "Our Contest" (3), and since we may be concerned with a more or less unique sample, Ing. Tolman rightfully asks whether both discoveries concern the same block of four.

I have had an opportunity to examine the discovery of Ing. Tolman and compare this block of four with that published in the journal *ČS. FILATELISTA* (3); of course, only with the photographs in the latter instance. In agreement with Ing. A. Tekelen (1) one might rightfully assume that both discoveries deal with the same block. However, a definite conclusion can only be reached when one carefully examines both.

I shall briefly describe the major characteristics of both types of comb perforations, i.e. the so-called vertical and horizontal types. The first stamps perforated by means of a comb perforator were the stamps of Great Britain of 1850 which were thus perforated in accordance with a patent granted on November 23, 1848, to the inventor Henry Archer. The comb perforator, in contrast with the older line perforator, produced in a single strike, a hole pattern approximating the shape of a comb, as shown in Figure 1. The aforementioned illustration illustrates the perforation sequence progressing from top to bottom. This sequence may be determined by comparing the perforation openings in the horizontal rows in subsequent lower rows (in Figure 1 in the direction of the arrow), which must exhibit corresponding characteristics. The distance between perforation needles are given by the dimensions "a" and "b" in the illustration. The characteristic sign for this type of perforation is the dimension "x," which may differ from the dimension b. The dimension x is actually dependent upon the accuracy of the perforation machine, and under ideal conditions x should equal b.

In contrast with such vertically progressing comb perforation is the perforation sequence progressing horizontally, for example from left to right (Figure 2), which in contrast must contain corresponding openings of the odd (x) variable spacing in horizontal rows. (See Figure 2.) The needle distance is again given by the dimensions a and b, while the dimension x is again characteristic of the adjustment of the machine

and the condition when $x = a$ is merely the ideal which in most instances was not achieved.

On the basis of these criteria it is possible to determine the type of perforation in the above mentioned issues. The common perforation had a spacing of perf 14 ($a = b$), which progressed from top to bottom, i.e. vertically. Ing. A. Tekel in his article (1) discusses the information presented in monografie, part 2 (4), as well as in the Specialized Catalogue (6), which both present as "common" the vertical sequence, both from top to bottom and from bottom to top and as "exceptional" the perforations progressing horizontally from left to right or right to left. I have had an opportunity to examine a large number of stamps of both issues in both used and mint condition, and I must fully support the opinion of Ing. Tekel, that perforations progressing from bottom to top have not been observed. Personally, I consider perforations progressing vertically from bottom to top as *even rarer* than horizontally progressing perforations from left to right.

It is certainly difficult in the instance of stamps coming from the center of the sheet to determine the progression of the perforations, however, with precise measurement and use of a microscope with a grid eyepiece it is possible to determine uniquely the type of perforation.

In addition to the common practice of progression from top to bottom, the printing plan also included on a trial basis a second type of progression, and that is in the horizontal direction progressing from the left to right. Based on the propensity of the perforation machine to fail, comb perforating was discontinued, and thus only the five heller violet (144)* the ten heller brown-olive (146)* of the Dove Issue and the 40h (154)* and the 60h (157)* of the Liberated Republic Issue were comb perforated. Thus, in particular in the instance of stamp No. 154* there could occur the above mentioned discovery. Also, in the horizontally progressing comb perforation one may agree with the conclusion of Ing. Tekel (1), that thus far there has been no publication or presentation of a reverse horizontally perforated example, i.e. one in which perforation progresses from left to right (except for No. 144).

In spite of this one cannot unequivocally deny the existence of such perforation

THE CZECHOSLOVAK SPECIALIST

(USPS 808300)

Official Journal of the Society for Czechoslovak Philately, Inc.

A.P.S. Unit 18, S.P.A. Branch 284

Vol. XLV

November 1983

No. 9, Whole No. 434

Published monthly except July and August - \$15.00 per year

Second Class Postage Paid at Ord, Nebraska 68862
and additional mailing offices

Editorial Office - 2936 Rosemoor Lane, Fairfax, VA 22030

Editorial Board: Chairman Richard Major, Ludvik Z. Svoboda
Henry Hahn, Jaroslav J. Verner, Paul Sturman.

President: Henry Hahn, 2936 Rosemoor Lane, Fairfax VA 22030

Vice President: Jaroslav J. Verner, 8602 Ewing Drive, Bethesda, MD 20817

National Secy.: Edward Lisy, 87 Carmita Avenue, Rutherford, NJ 07070

Treasurer: Ludvik Z. Svoboda, 12375 E. Cedar Circle, Aurora, CO 80012

Librarian: Jay T. Carrigan, 12000 Fairfax Station Rd., Fairfax Station, VA 22037

Expertizing Ch.: Edwin W. Lehecka, 217 Hazel Ave., Westfield, NJ 07090

Circuit Manager: Wolfgang Fritzsche, Box 8, Canandaigua, NY 14424

Changes of address to the editorial office.

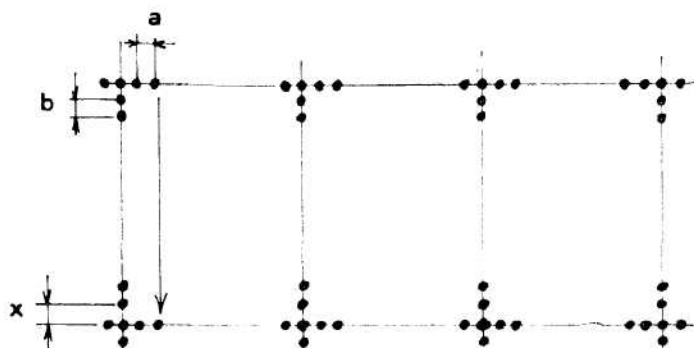


Figure 1. Vertical Comb perforation (from top to bottom).

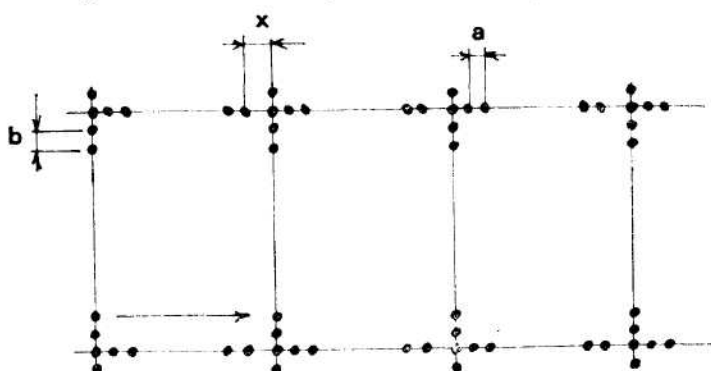


Figure 2. Horizontal Comb perforation (from left to right).

types, particularly when one considers singular examples. Therefore we turn to our philatelic community, particularly to our specialists, to again examine their material, and should they discover even a small possibility of the existence of unreported types to present these to us. Should these unreported types indeed exist (and who knows) their discoveries would vastly increase common knowledge of these issues and present yet another collecting challenge to our specialists.

*POFIS Cat. Number

Literature

1. Tekel A.: Filatelie 1, 12 (1983)
2. Tolman Vl.: Filatelie 11, 330 (1982)
3. red.: Cs. filatelista 4 (1949)
4. Karasek a kol.: Monografie, dil II, NADAS 1971
5. Sramek Fr.: Markur 11 (1970)
6. Specializovany katalog, Praha 1978
7. Sramek Fr.: Filatelie 24, 750 (1978)

CHANGE OF ADDRESS

1055 MITCHELL, Robert E., Lot 38, 451 SE 8th St., Homestead, FL 33030

A NATIONAL ANTHEM AND OTHER MUSIC MAKERS OF CZECHOSLOVAKIA

By G. M. van Zanten

The 100th anniversary of the death of the author of the song "Where Is My Home?", František Škroup, was celebrated on February 26, 1962, by a 20h stamp in a set for cultural events and anniversaries. The number issued was a phenomenal 21,360,000 refer Pofis number 1,234. This blue stamp is of course closely connected with Pofis numbers 283 and 284, the anthem sheets, issued on December 21, 1934, and issued in quantities of 12,900 for the red 1 Kčs value and 9,600 for the blue 2 Kčs value.

František Škroup was the author of the song "Where Is My Home?" — (KDE DOMOV MŮJ?), which with the Slovak song "Lighting Over the Tatras" (NAD TATROU SA BLYSKA) was made into the Czechoslovak national anthem in 1919.

The first part has words by Josef Kajetán Tyl, who lived from 1808–1856 and represented the Czech part. Words in English are:

"Where is my home?
Streams are rushing through the meadows,
'Mid the rocks sigh fragrant pine groves,
Orchards decked in Spring's array
Scenes of Paradise portray.
And this land of wond'rous beauty
Is the Czech land, home of mine
Is the Czech land, home of mine."



Tyl, who was a leading playwright, wrote this song for the play "Fidlovačka"; this song, full of sentiment, was well received on its first performance on December 21, 1834. It fully reflected the atmosphere of the period, when the Czech nation realized its own rights against the Austro-German national oppression.

The second part has words by Janko Matúška, and represented the Slovak part; English words are:

"Lightning strikes our mighty Tatra tempest shaken,
Lightning strikes our mighty Tatra tempest shaken,
Stand we fast, friends of mine,
Storms must pass, sun will shine,
Slovaks shall awaken."

This part was a folksong commemorating the exodus of Slovak students from Bratislava in 1834.

František Škroup was born on June 3, 1801, his father was a teacher, and an excellent musician, and as a small boy, František sang in the choir in the local church, and soon learned to play the piano and the organ. The world of music attracted him so much that he did not finish his law studies, and devoted himself fully to composing as well as conducting.

In 1827 he was appointed first conductor in the Estate's Theatre in Prague, the then foremost scene in the Bohemian capital, he held this post for twenty years.

Škroup composed nine operas, wrote music to a large number of Czech plays and composed more than fifty songs.

His compositions included chamber and orchestral works, both secular and ecclesiastical, he was the first to compose an opera on a original Czech libretto. The two-act opera, "The Pot Mender" (Dráteník) was received with enthusiasm by the critics and the opera lovers. It had its premiere on February 2nd, 1826, in the Estates' Theatre, and the composer himself sang the title role.

To be continued

Dr. Jan Kostelka (translated by Paul Sturman)

BOHEMOSLOVENICA *(continued)*

Catalog of stamps and postal stationery containing reference to Czechoslovakia, its land, peoples, their fields of endeavor and achievements.

For ease in identification the Michel Catalog is utilized, presumably most widely used in philately.

In some instances catalog numbers for the latest issues were not available at the time of compilation of this work. It is hoped, however, that the description of a particular issue will be sufficiently clear for finding the proper Michel number when available.

SWEDEN *(continued)*

The fearless champion of rights for the Slovaks in Hungary, Björnsterne Björnson appears on the stamps of "Nobel Prize Winners" of 1963. In the years of 1907–1910 he was in the forefront of the struggle for freedom of Slovaks. (Born 8 December 1832 - Died 26 April 1910). Mi 513–514.

On the occasions of Czechoslovak efforts in cultural endeavors in April 1967 a propaganda exhibition of Czechoslovak stamps was held in Stockholm. A special cancelation seal was used propagating the exhibition.

In 1965 a stamp was issued with the portrait of Philip Ed. Anton von Lenard (1826–1947) who was born in Bratislava. He was awarded a Nobel Prize for physics in 1905. Mi 542–543.

In October 1974 the post office at Göteborg used a special commemorative seal with the likeness of Bedřich Smetana.

SWITZERLAND

For the world championship in hockey in Lausanne and Geneva a special entire was issued which also bore the flag of Czechoslovakia.

In the 1972 set of portraits the likeness of Prof. Albert Einstein appears who in his time taught in Praha. Mi 979–983.

In some of the cities of Switzerland machine cancelations carry a legend propagating Pilsener beer (Pilsner Urquel).

In February 1979 a set of stamps featuring outstanding cultural personages, among them Rainer Maria Rilke born in Praha and a poet of note, and author Thomas Mann at one time a citizen of Czechoslovakia. Mi 1146–1149.

In 1979 a stamp was issued in honor of the 100th anniversary of birth of Prof. Albert Einstein.

SYRIA

Czechoslovak workers and factories produced the refinery of oil in Homs erected in 1960. Mi 60.

For the 7th international fair in Damascus, 1960, a souvenir sheet with the flags of participating nations was issued. The flag of Czechoslovakia appears on the lower part of the sheet. Mi 3.

To be continued

MAIL AUCTION

By Mirko Vondra

All lots are Mint, lightly hinged, in fine condition, unless specified differently. Bids must be mailed to M. L. Vondra, 740 South 6th Street, Chambersburg, Pa. 17201, and must be received no later than Jan. 31st.

Lot #	Description	Minimum Bid
1.	Posta B-19, type II.....	\$ 18.00
2.	Posta B-20, type II (narrow).....	6.00
3.	Posta B-20, type II (wide).....	7.00
4.	Posta B-20A, type I.....	16.00
5.	Posta B-21, type II.....	225.00
6.	Posta B-32, type III.....	20.00
7.	Posta B-41, type II.....	11.00
8.	Posta B-42, type III.....	5.00
9.	Posta B-44, type II.....	28.00
10.	Posta B-45 on piece, type I.....	375.00
11.	Posta B-46 used, type III.....	775.00
12.	Posta B-55, type II.....	4.00
13.	Posta B-56, type II.....	28.00
14.	Posta B-57, type II.....	300.00
15.	Posta B-58, type II.....	12.00
16.	Posta B-59, type II.....	85.00
17.	Posta B-60, type II.....	70.00
18.	Posta B-62, type II.....	70.00
19.	Posta B-66 with tab, type II (signed Tribuna).....	22.00
20.	Posta B-69 with tab, type II (never hinged).....	30.00
21.	Posta B-88, type II.....	20.00
22.	Posta B-89, type III.....	90.00
23.	Posta B-117, type I.....	5.00
24.	Posta B-123, type I (signed Letesicky & Tribuna).....	30.00
25.	First Praha issue "Provisorni Ceskoslovensko Vlada," complete to 1 K (15 values).....	35.00
26.	Second Praha issue, "Ceskoslovenska Statni Posta" overprint, complete to 1 K (15 values).....	35.00
27.	Horner-Budejovice issue each used on piece Complete thru 10 K (19 values).....	110.00
28.	Horner-Budejovice issue: B-18, B-19, B-20, B-21, from 2 K to 10 K, Express, dues 5 h-40 h.....	110.00
29.	Srobar issue — Reapers 2 f-10 f, Karl 10 f-25 f (9 values).....	50.00
30.	Scout issue, first printing.....	25.00
31.	Czechoslovak Legion Post, Scott 1-3, perf 11½.....	35.00
32.	Czechoslovak Legion, Scott 1a-3a, imperf.....	35.00
33.	Czechoslovak Legion Post, perf 13¾.....	5.00

NEW MEMBERS

- 1407 KOPRIVA, Thomas, P.O. Box 24, Gardiner, OR 97441
 1408 TEMPLER, Darryl L., 5531 La Jolla Hermosa Ave., La Jolla, CA 92037
 1409 ZELEK, Raymond D., 40 Fox Hedge Rd., Saddle River, NJ 07458

ALFONS MUCHA

BY
EDWARD J. SABOL

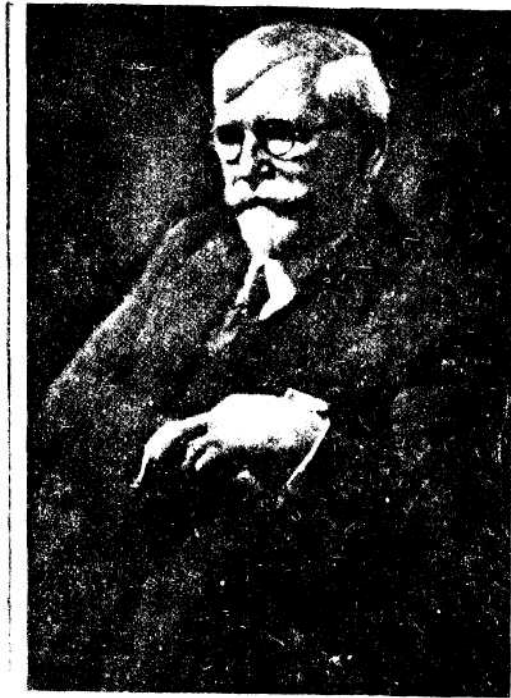


Alfons Mucha



SARAH BERNHARDT...

Ever since a teen-age boy, Mucha was obsessed with the "theatre".....Many years later he met the "idol-of -his life" SARAH BERNHARDT..."the person who would become a...catalyst to great and stunning success. Mucha designed advertising posters for her -here we show two posters which are not commonly published for.....your enjoyment. The two posters shown depict Sarah. Please note a bloodied sword above and compare same to Figure 13 within this story. Please note the un-real .. position of the victim under the ... bloodied sword. Notice the fine detail within the two posters in general.



Alfons Mucha

This article will show other profiles of Alfons Mucha's multi-faceted career probably not heretofore documented in any great detail.

Mucha scholars agree that his stay in France culminated in his acceptance and prominence in the world of art. Even today, many aspiring artists from the world over migrate to Paris in pursuit of artistic fame and fortune.

France is not too far distant from Czechoslovakia, birthplace and home of the popular art-nouveau artist. His homeland, like his work, is an interesting potpourri of various elements. The small inland country is home to Czechs, Slovaks, Moravians, Carpatho-Ukraines, E. Silesians, Ruthenians, Sudetenland Germans and others.

Prior to the cessation of hostilities in 1918, there was no Czechoslovakia. Its people for centuries endured oppression without any letup under the Austro-Hungarian Monarchy. Finally, the bells of freedom tolled and a new country was born with Thomas G. Masaryk, first President of the Republic. The form of government was patterned after that of the USA.

Among the many problems which faced the new nation was the issuance of its postage stamps. The Czechoslovak postal authorities realized the postage stamps could be a perfect medium in its effort to spread the gospel of liberation and freedom to the world did a very wise thing. They selected and commissioned Alfons Mucha, one of the period's foremost artists and a recognized authority on Czechoslovak history, to design the first issues of postage stamps.

Unfortunately, the cheap method employed in printing the first stamps, the inadequacy and a lack of printing facilities prevented the full beauty, art and symbols Mucha incorporated into the designs from showing to full advantage.

Figures 3, 4, 5, and 6 show original sketches by Alfons Mucha which were to be part of the first issue. Figures 7, 8, 9, 10, and 11 illustrate (enlarged photographs of "proofs") the actual stamps Mucha designed. It is apparent the stamp designs follow Mucha's style in other avenues such as posters, postcards, menus, ad infinitum.

Alfons Mucha

FROM MUCHA'S SKETCH PAD

FIGURE 3

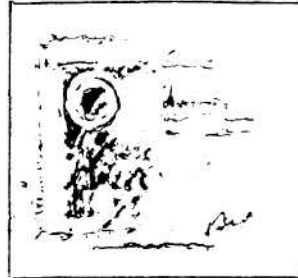


FIGURE 4

Sketch showing a detailed study of the main tower in the cathedral. This initial sketch adopted in final design.

Original sketches by Mucha in connection with his stamp designs for Czechoslovakia (1918). Sketch shows contour of Cathedral of St. Vitus. Lower left shows small rooster

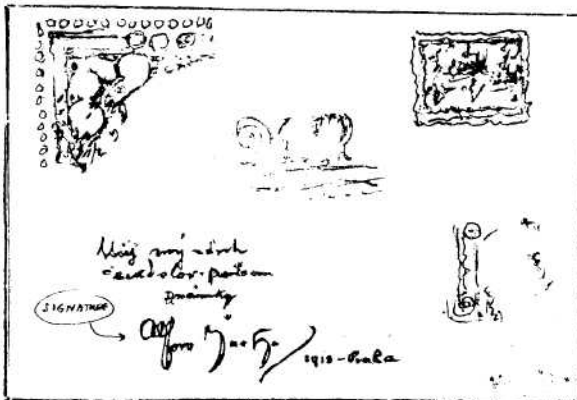


FIGURE 6

Original Mucha sketch shows parts of the border ornaments and a rough sketch of the entire design. Students of artistic detail were enthralled when the stamps appeared noting a rising sun behind the Cathedral. They realized that the great artist employed artistic license in that because of the geographical position of the design, actually the sun in the background should have been descending !!!!!



FIGURE 5

Cupola of St. Nicholas church situated near the St. Vitus Cathedral. Located on right side of the Cathedral in finished design.

To be continued

SILVER JUBILEE XXVth MAIL AUCTION

Dr. Ladislav V. Fischmeister, M.D.
State Hospital
MacClenny, Florida 32063

Auction ends JANUARY 31st, 1984

All stamps are unused, unless otherwise stated.

The prices below represent MINIMUM BIDS (AUSRUPPREIS).

Lot #	Description	Minimum Bid
1.	1918, Essay RIJACEK, Art paper COMPL. 1-10 K (15v.)	\$ 89.00
2.	1918, Budejovice (Horner) compl. 34v. violet overprint, used, av.VF.	190.00
3.	—, same, black overprint, 5k porto missing, 33v, used, av.VF. . .	150.00
4.	—, same, 3h-10K used, 19 val.F-VF, black overprint	95.00
5.	—, SROBAR, 14 val., f-VF	75.00
6.	—, Scouts, set of mint or used, each.	18.00
7.	HRADCANY, black print 1-1000 (15v.)	79.00
8.	—, VZOREC, imp. 3-300 (14v.)	95.00
9.	—, 10h red, essay , double print on brown paper, block of 15 . .	29.00
10.	—, Essay on brown paper, 1-400 (14), scarce	29.00
11.	—, —, same, double print, 1-200 (10)	25.00
12.	—, NEOTYPIE, 10h in black on cream paper	11.00
13.	—, Ministerial perforation 11½, 1-500 (9)	29.00
14.	—, 10h green, IMP	18.00
15.	—, same, BLOCK of 4	79.00
16.	—, 20h IMP	59.00
17.	—, 30h IMP., violet.	79.00
18.	—, 30h IMP., DARK viol., not issued	69.00
19.	—, 30h, IMP., viol.. DOUBLE print	79.00
20.	—, GUTTER 3h, COMPLETE DOUBLE SHEET R, av. f-VF . .	190.00
21.	—, —, 3h VF	12.00
22.	—, 5h, VF	21.00
23.	—, 10h, M 3 SZ.	65.00
24.	—, 25h, F-VF	99.00
25.	—, COMPLETE SHEET, 1h, imp., used or mint, each...average f-vf selvage	13.00
26.	—, same, 3h...same	13.00
27.	—, same, 10h red, imp. R, special.	49.00
28.	—, same, 30h olive, R., special	49.00
29.	LEGION, 25h, perf 11½	5.00
30.	—, 100h perf 10½:11½	4.50
31.	—, BLACK PRINT ON ART PAPER, 15-50	14.00
32.	—, Essay 15h in olive, blue, violet, each	7.00
33.	—, 75-120, IMP., green overpr. in BLOCKS of 4	39.00
34.	—, COMPLETE SET IN COMPLETE SHEETS (incl. plates) very rarely offered (6 sh)	199.00
35.	—, 75, 100, on CARTON pap	11.00
36.	PC 1919. 3h-1 K, typ I, typ II, 2 compl. sets (30)	10.00
37.	—, 3h, TYP II a	19.00
38.	—, 5h, TYP II a	25.00
39.	—, 15h TYP II a	16.00
40.	—, 25h, OFFSET	6.50
41.	—, 60, Offset	6.00

42.	—, 15-30, 4 blocks with types I & II	16.00
43.	—, 2k, ALL types of papers & types (6).....	12.00
44.	—, 3 K granit	11.00
45.	—, 3 K ROSE...both types...each	22.00
46.	—, 3 K CLARET (karminbraun)	610.00
47.	—, 4 K, green.....	4.50
48.	—, 4 K, green LARGE FORMAT.....	11.00
49.	PC 1919, 4 K Dark green.....	27.00
50.	—, 2 K DARK BLUE TYP II, small form, used RRR	150.00
51.	—, 10 K LIGHT violet, R	195.00
52.	—, 10 K DARK violet, RR	265.00
53.	—, 2h triangle.....	15.00
54.	—, same PAIR	31.00
55.	—, 5h triangle RR	730.00
56.	—, Newspaper ALL types 2-30h, 3 sets (15).....	12.00
57.	—, 2h same, complete SHEET, scarce	29.00
58.	—, PORTO, Large N., 4h	13.00
59.	—, —, 6h.....	8.00
60.	—, —, 25h.....	29.00
61.	—, —, 30h.....	310.00
62.	—, —, 50h.....	625.00
63.	—, SMALL NUM. 50h.....	210.00
64.	—, 1 K ultramarin	3.50
65.	—, 5 K.....	14.00
66.	—, 1, K	185.00
67.	—, 1 h grey	9.00
68.	—, 15/2	65.00
69.	—, 10/24	55.00
70.	—, 20/54	55.00
71.	—, Zita 50f	18.00
72.	—, TURUL, 1 f, RR	910.00
73.	—, same 3 & 60 f each	19.00
74.	—, TURUL 70 f, RR.....	925.00
75.	Parlament, 3 K, cat 45.00.....	25.00
76.	Same, 5 K, cat. 160.00...special.....	69.00
77.	White numerals 15 f...cat. 150.00.....	75.00
78.	Porto, 1 f RED num	125.00
79.	—, 30f, cat. 55.00	27.00
80.	1920, MASARYK, 50h essay in blue.....	4.00
81.	—, 125 essay in ultramarin.....	20.00
82.	—, 125 essay in violet	18.00
83.	—, 500h, essay in black on color paper	18.00
84.	—, 1000h, BLACK ON ART PAP.....	18.00
85.	—, 125 IMPERFORATED.....	19.00
86.	—, 125 ULTRAMARIN.....	39.00
87.	—, 500h IMPERFORATED.....	10.00
88.	—, 1000h, used, ROSE IN HAIR	10.00
89.	DOVE & ALLEG, BLACK print on ART pap. 5-250 (11).....	35.00
90.	—, Essay 10h red orange with 30mm board	29.00
91.	—, DOVE 5-25, IMP. (6).....	33.00
92.	—, ALL, 20-185, IMP. (6)	33.00
93.	—, 30, 60, 100, 185, PAIR IMPERFORATED	43.00
94.	—, 50h, green, EGG	26.00
95.	—, 50h, green, IMPERFORATE.....	89.00
96.	—, 100 perf 11½, FISCAL FALSUM.....	41.00
97.	—, 5h tete-beche, COMPLETE STRIP OF 9, R.....	69.00

98.	—, 10h rete-beche, COMPLETE STRIP OF 9, R	12.00
99.	—, 5, 10, 40, 60, tete-beche SMALL	12.00
100.	—, same, but LARGE T-B	19.00
101.	—, 20h, Small T-B	19.00
102.	—, 20h, LARGE T-B	29.00
103.	—, 50h, small T-B	29.00
104.	—, COMPLETE SET OF T-B, USED (exc. 10h large, mint) -12 pairs	110.00
105.	HUSITA, SET IMP	9.00
106.	—, same IMP. PAIRS	22.00
107.	—, 90h Essaye in 12 diff. colors	49.00
108.	RED CROSS, Set IMPERF	19.00
109.	1923, JUBILEE, Set	13.00
110.	—, ALL WZ, Compl., 4 sets	69.00
111.	1925, OLYMPIC, Set	38.00
112.	—, ALL WZ, 4 sets, R	160.00
113.	1926, SOKOL, Set	33.00
114.	—, ALL WZ, 4 sets, R	150.00
115.	1925/6, MASARYK. NEOTYPIE, Perf 133/4:13½, ALL WZ, 4 sets, R	37.00
116.	—, Perf. 13 3/4, ALL WZ, 4 sets, R	36.00
117.	—, TYP I, ALL WZ	39.00
118.	—, same, USED, ALL WZ	15.00
119.	—, TYP II (Raminko), 1 Kc...special	42.00
120.	—, same, Block of 4, WZ 8...R	175.00
121.	—, VERTICAL WZ. 1 Kc WZ 3, NH. VF-EF	169.00
122.	—, 1 Kc WZ 4 F	125.00
123.	—, 2 Kc, WZ 1 & r, LUXUS, USED, each	21.00
124.	—, 2 Kc, WZ 3, NH, LUXUS	179.00
125.	—, 2 Kc, WZ 4, VF	159.00
126.	—, 3 Kc, WZ 4, LUXUS, USED	19.00
127.	—, 3 Kc, WZ 4, F...special	280.00
128.	—, 3 Kc, WZ 4, NH, VF-EF	350.00
129.	1926, Castles. VERTICAL COILS, R, 20 & 30h, PAIRS, NH, each	195.00
130.	—, 30h Pernstyn, Vert. coil of THREE, NH, RR	225.00
131.	—, same, BLOCK OF SIX (2×3 !!) together, RRR...NH	499.00
132.	1932, Orlik, 4 Kc, upper or lower coupon, each	16.00
133.	1933, NITRA, 50h GUTTER, Special	167.00
134.	1934, KDM SHEETS, EF	850.00
135.	—, same, minimal, USUAL, board wrinkles, stamps VF-EF	525.00
136.	Masaryk, Comp. set in blocks with Plates, coupons	49.00
137.	1935-38, PROOFS, Mukacevo (green), Kosice (green, red, brown), each	49.00
138.	—, Olomouc 5Kc (green, brown), Purkyne 1 Kc (green), Fugner 1 Kc (green), each	55.00
139.	—, Benes, typ I or II, Plzen (blue, olive)...each	49.00
140.	—, Praga 38 (green, brown, blue), Bratislava 37 (red)	49.00
141.	PROTEKTORAT, Complete	39.00
142.	—, TEREZIN KZ, green...R	179.00
143.	—, —, Presentation sheet in BLACK R	225.00
144.	—, Linden gutters, 4 stamps	8.00
145.	—, Porto, compl. gutter	16.00
146.	—, Overprint, compl	25.00
147.	—, —, 4, 5, 10 K, 2 compl. sets with coupons, R	112.00
148.	SLOVAKIA, compl., incl. B 27a (sheet)	199.00

149.	—, Children sheet, B 27a	13.00
150.	—, Tiso lo K, gutter	6.00
151.	—, Porto 1 Ks, IMP. PAIR, R	120.00
152.	—, Porto, 10 K, IMP. Pair, R	120.00
153.	1945, KOSICE, Gutter, vertical, 2 stamps	15.00
154.	—, Gutter, 4 stamps	19.00
155.	—, SMALL CROSS...R	240.00
156.	1945, Masaryk, 1 K, IMP. on top	12.00
157.	—, same, 2 K, pair, IMP. top	23.00
158.	—, Partyzan sheet	13.00
159.	1946, St. George sheet, TYP II	16.00
160.	1952, Bratislava sheet	26.00
161.	1957, Zapotocky sheet, TYP II, USED...R	29.00
162.	1955, Praga, IMP	23.00
163.	COSTUMES, 1955, Complete FDC	12.00
164.	—, 60h TYP II, R	27.00
165.	—, 160 TYP II, R	4.00
166.	—, COMPLETE SHEETS of 10, ALL setenant types, RR	499.00
167.	—, 1956, COMPLETE SHEETS of 10	59.00
168.	—, 1977, COMPLETE SHEETS of 10	39.00
169.	1961, Praha, 5 Kc, BLOCK OF FOUR, R	79.00
170.	1962, Praha sheet, IMP	19.00
171.	1968, Durer, sheet of 4, mint, used & Black print...each	5.00
172.	1972, Hockey, block of 4	39.00
173.	SIBERIA, Large essaye set, compl. 5 diff colors (25)	125.00
174.	—, FIRST set, perf 1 1/2	55.00
175.	—, 2 kop-1 R, compl set of 9	110.00
176.	—, Lion, stationery	25.00
177.	—, Lion, essay in diff color	25.00
178.	SO 1920, Hradcany 1000, BLACK overpr	95.00
179.	—, Masaryk, set, special	75.00
180.	—, 5h Hradcany, IMP	15.00
181.	—, 15h, IMP	8.00
182.	AIR MAIL, 1st set, IMP	45.00
183.	—, 1st set perf	62.00 spec.
184.	—, INVERTED OVERPRINT, set, R	270.00
185.	—, Second set, blocks of 4, sompl, special	30.00
186.	—, Essay, small plane in brown, no val	59.00
187.	—, ZEPPELLIN, 4th Sudamerika...1932	320.00
188.	—, same, 1933, 6th SA Fehrt...RR	365.00
189.	NEWSPAPER, 1918, Provisionals, 4 diff	12.00
190.	—, NASINEC	8.00
191.	—, 20h in VIOLET COLOR (unissued)	16.00
192.	—, 1937, 5h GUTTER, horizontal	165.00
193.	—, —, 5h, GUTTER, 4 stamps, VERTICAL	175.00
194.	—, 1937, sheet, NO COMA behind, znamek	16.00
195.	Special delivery, 2, 5h, WHITE paper	9.00
196.	PORTO, Hradcany 100/80, VIOLET OVERPRINT	16.00
197.	Spec. delivery, 5h, COMPLETE SHEET (100), scarce	29.00
198.	Czechoslovakia, 500 different, mint & used	11.00
199.	Same, 1000 different, mint & used	22.00
200.	KATALOG PRAGA 1978	6.00

PLEASE BID EARLY. Lots are guaranteed genuine and as described.

Returns within 7 days. Europe 14 days.

KEIN AUFGELD. Postage & insurance extra. THANK YOU.

PLEASE SEND ME YOUR WANT LIST IN THE SAME TIME.

(Advertisement)



**OF PRAGUE INVITES YOU TO
Collect CZECHOSLOVAK STAMPS**

And Gives You Ten Fine Reasons Why:

- 1) They'll give you a glimpse into the heart of Europe
- 2) You'll make friends with a people who, in peace, are building a new life for their country
- 3) You'll marvel at the beauty of Czechoslovakia's countryside, extolled by its artists and poets
- 4) You'll become acquainted (or reacquainted) with the old cultural tradition of the Czech and Slovak peoples
- 5) You'll learn of the characteristic fauna and flora of Central Europe
- 6) You'll keep up with the latest in Czechoslovakia's industrial and scientific development, including advanced research
- 7) You'll love their motion — like illustrations of the colorful world of sport
- 8) You'll see why Czechoslovakia has gained international recognition for its advanced techniques of stamp reproduction, harmony of color and outstanding artistry
- 9) They represent the work of their finest artists and engravers
- 10) Czechoslovakia's stamps are neither too large or small — just stamps as stamps should be!

ASK YOUR FAVORITE DEALER!

THE CZECHOSLOVAK SPECIALIST

(USPS 808300)

2936 Rosemoor Lane
Fairfax, VA 22030

Second Class
Postage Paid
Ord, Nebraska 68862
and additional
mailing offices