

THE CZECHOSLOVAK SPECIALIST

Official Monthly Journal of the  Society for Czechoslovak Philately, Inc.

Silver Award — INTERPHIL '76

A.P.S. Unit 18

S.P.A. Branch 284

Vol. XXXIX

June 1977

No. 6, Whole No. 371

LAST CALL FOR BALPEX 77

By Richard M. Major, Chairman

This beautiful lead crystal vase will be awarded to the winning exhibit by the Society for Czechoslovak Philately at BALPEX 77 on Labor Day weekend, September 3, 4 and 5. Over 100 frames of Czechoslovak and related philatelic material will be exhibited at this prominent show at Baltimore's Hunt Valley Inn, which will be the site of the annual meeting of our Society.

Saturday, September 3, will be the prime day for SCP Society activities. At 2 p.m. there will be a seminar-type meeting with presentations on various aspects of Czechoslovak philately. Following this, there will be two auctions of Czechoslovak as well as related material, which because of BALPEX rules will be limited to members of the Society only. On Saturday evening at 8 o'clock there will be a social get-together and dinner for Society members and friends.

The BALPEX Auction by Matthew Bennett will be held on Sunday, September 4, and the BALPEX Awards Banquet will be on Sunday evening at 8:15. The show will continue on Monday. There will be a presentation on some aspect of Czechoslovak Philately on Monday afternoon as well.

During the entire show the Society will have a table at which information about the Society will be available and philatelic literature will



be on sale. There will also be a special cover commemorating the 40th anniversary of the death of Thomas G. Masaryk, with a special cachet similar to the mourning postmark cancellations used at the time of Masaryk's death in 1937.

All in all it should be a great show. Plan now to attend.

CZECHOSLOVAK COMMEMORATIVE POSTMARKS 1919-1939

Translated by Dr. Otokar Kutvirt in collaboration with Wolfgang Frizsche

INDEX

The postmark listings were spread over 2½ years in 12 different issues of the SPECIALIST. Since the listings were not always in chronological order, we have prepared this index. To help those who also use the Novotny 1947 postal stationery and cancellation catalogue, we also give the corresponding numbers in parentheses.

Years	Specialist Whole Number:
1919 to 1924 incl. (Nr. 1-40)	321
1925 to 1929 incl. (Nr. 41-101)	322
1930 and 1931 (Nr. 102-140)	323
1932 and 1933 (Nr. 141-166)	324
1934 to April 5, 1935 (Nr. 167-242)	325
1935 April to end (Nr. 243-312)	336
1936 to June 27 (Nr. 313-352)	328
1936, June to end (Nr. 353-402)	329
1937 to June 12 (Nr. 403-431)	329
1937, June 12 to July 26 (Nr. 432-459)	331
1937, July 30 to end (Nr. 460-515)	332
1938, Jan. to June 5 (Nr. 516-543)	345
1938, June 5 to June 26 (Nr. 544-556)	346
1938, June 26 to July 17 (Nr. 557-569)	345
1938, July 20 to end (Nr. 570-586)	346
1939 (Nr. 587-589)	346

THE CZECHOSLOVAK SPECIALIST

Official Journal of the Society for Czechoslovak Philately, Inc.
A.P.S. Unit 18, S.P.A. Branch 284

Vol. XXXIX

June 1977

No. 6, Whole No. 371

Published monthly except July and August — \$7.50 per year

Second Class Postage Paid at Lawrence, Kansas 66044

Office of Publication, 821 Vermont St., Lawrence, Kansas 66044

Mrs. Joseph F. Sterba, Jr., Editor, 6624 Windsor Ave., Berwyn, Ill. 60402

Managing Editor Harlan W. Miller

Melvin F. Klozar, Manager of Collection of Advertising

913 Spring Road, Elmhurst, Ill. 62106

Dick Major, Sales Agent, For Sale Through the Specialist

P. O. Box 4074, Arlington, Va. 22204

President, H. Hahn, 2936 Rosemoor La., Fairfax, VA 22030

Vice Pres. and Circuit Mgr., W. Fritzsche, P. O. Box 8, Canandaigua, NY 14424

Secretary, E. Lisy, 87 Carmita Ave., Rutherford, NJ 07070

Treasurer, H. Samek, Jr., 138 Burlington Ave., Paterson, NJ 07502

Librarian, J. T. Carrigan, 12448 Over Ridge Rd., Potomac, MD 20854

Expertizing Chairman, Dr. L. V. Fischmeister, VA Hosp., Augusta, GA 30904

Postmaster: Send form 3579 to 821 Vermont St., Lawrence, Kans. 66044

History of Printing Postage Stamps 'For Slavkov Only'

Author JUDr. Jan Kostelka, Brno, Czechoslovakia

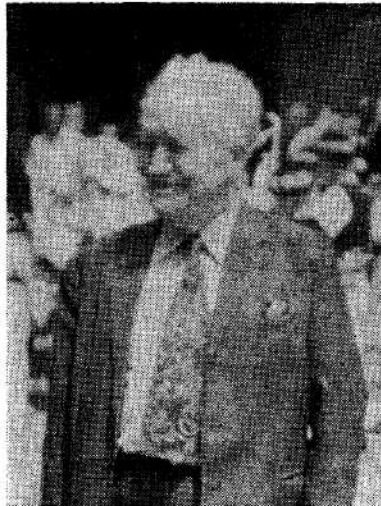
Translation furnished by JUDr. Jan Kostelka

JUDr. Jan Kostelka, of Brno, Czechoslovakia, is a well known collector and an outstanding philatelic authority in his native country, as well as in the European philatelic world.

JUDr. Kostelka is the author of a philatelic book entitled "Bohemoslovenica." He has numerous philatelic collections, one of which is a subject collection based upon his book "Bohemoslovenica." For this collection JUDr. Kostelka has been the recipient of numerous philatelic awards. "Bohemoslovenica" is a thematic (topical) collection containing philatelic material issued in a foreign country, which have reference and relationship to Czechoslovakia.

JUDr. Kostelka is also a well-versed historian. He has combined his favorite historical subject, together with his philatelic knowledge to assemble an outstanding collection, "A Tribute to Napoleon Bonapart."

JUDr. Kostelka was the secretary-director of the Sekretariat for BRNO-74. Your editor was privileged to be in attendance at BRNO-74 and among the highlights of the social activities connected with the exhibition was a tour to Slavkov (Austerlitz) conducted by JUDr. Kostelka. He presented a most interesting resume on the geographical and historical background of the area, pointing out the loca-



JUDr. Jan Kostelka

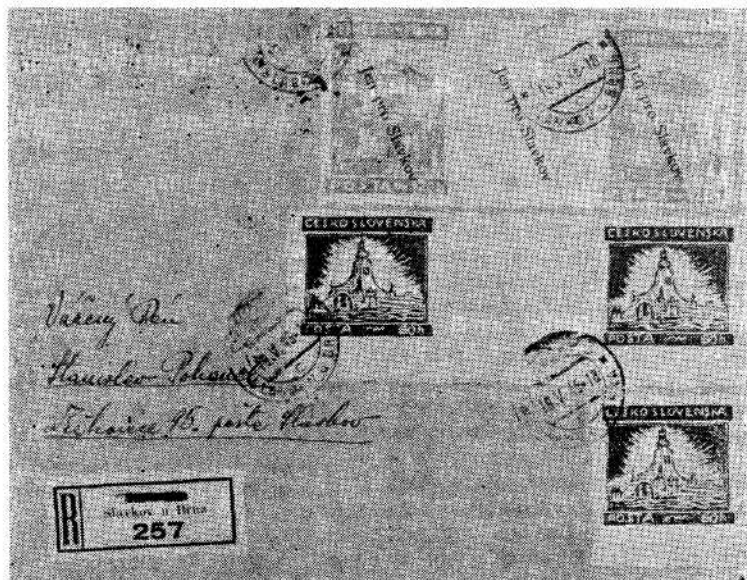
tions of the various troops, officers and generals taking part in the battle. He again, when we visited Slavkov Castle, drew our attention to the objects housed in the Castle relative to this historically world-known military feat.

On behalf of our Society, we are most grateful that JUDr. Kostelka forwarded (and arranged for the English translation) of this article.

Na shledanou JUDr. Kostelka, v Praze, Na PRAGA-78.

In a recent article which appeared in our Czechoslovak philatelic periodical, "Filatelie," reference was made that it would be advantageous to preserve for future philatelic annals and philatelists, some background about "Protectorate" postage stamps used in 1945. To obtain some of this information, it was necessary to contact persons who were actively engaged in these projects and who participated in printing some of the stamps used during that period. Among these projects were a series of stamps printed and known as "For Slavkov Only."

For this reason I called upon Karel Snasel, a printer who is 80 years of age, and who previously had related to me the background of the Slavkov stamps. In fact, Karel Snasel was their designer and originator. To visit Karel Snasel did not require a lengthy trip, as he had been dwelling for almost 30 years in the same apartment complex as I do, residing in the apartment



above mine. In order to summarize the history of the Slavkov stamps, I posed questions to him and he responded by reminiscing of his activities during the post World War II period.

"What induced you to undertake the printing of the stamps?"

"After the liberation of the town of Slavkov (Austerlitz) on April 26, 1945, it was only a short period of time before those who had collaborated with the Germans were relieved of their posts and political power was taken over by the newly appointed National Committee. I myself happened to be a member of the National Committee. At that time we had no regular or official contact with our surrounding local post office officials, we therefore were at a loss as what were the best steps to initiate and restore the postal system to its pre-war status. For the time being, Protectorate stamps were still in use. However, on May 10, 1945, the Commander of the Soviet garrison issued an order prohibiting the use of any stamps bearing Hitler's picture or any Nazi inscriptions. For this reason a delegation composed of the citizens of our town, myself included, called upon the Soviet Commander to discuss the matter with him. The Commander cordially complied with our wishes in respect to various problems dealing with the administration, but the use of Protectorate postage stamps, particularly those with the portrait of Hitler, he refused to permit to be used. In a conversation with the postmaster, Alois Facek, the suggestion was presented to print stamps. Indirectly in this manner the idea came up of printing stamps."

"How was it that you were entrusted with performing this printing?"

"The National Committees in surrounding communities, as well as in the town of Slavkov itself, applied to me for help in this matter as I was a typesetter by trade. When employed as a printer, I occasionally had to engrave designs, working with linoleum and was therefore asked to design a simple set of stamps, for our local use. I could not obtain adequate material and for that reason I had to make use of an old floor covering, of a rubber base composition. The printing of the stamps, using this type of inferior material did not produce first class, quality stamps but the task was completed.



Fig. 1

The National Committee requested me to produce similar prints of postage stamps as well. Again I was unable to locate suitable material. Ultimately I located a piece of lead plate and used it to engrave small letters upon it."

"How did you proceed producing the prints?"

"It was not a simple matter. It took great patience to engrave the very small letters. I had to produce some symbol or design to replace the portrait of Hitler. I suggested an oval motive with the inscription "The Czechoslovak Republic," with the Czech Lion in the center. I produced this design by drawing on transparent paper the design selected, using India ink to obtain a negative. I then reproduced this negative on the lead plate but the reproduction was not distinct and clear. I was at a loss, what to do next! I finally painted the lead plate over with white color. The reproduction was now on the whole, successful. This stamp printing was turned over to the Slavkov post office on May 14, 1945. I myself was asked, by the postmaster, to apply the print to postage stamps on letters and those freely sold at the post office. The citizens were informed, by local broadcast, about these arrangements. Approximately 500 of these prints were produced. In a similar way I designed and made a commemorative hand stamp cancellation, using the date of the liberation of Slavkov, April 26, 1945. Red ink was used for the commemorative cancellation."

"As far as I know, you Mr. Snasel, are the producer of the Slavkov postage stamps as well. How did you produce them?"

"It was in cooperation with the National Committee that designs for these stamps were selected. The aforementioned prints did not suffice. Two designs were selected, one representing the Church of Slavkov, while the other The Peace Monument, located on a hilltop near the village of Prace. I produced the cliches* for these stamps in the same way as the above stereo-



Fig. 2

type plates. The question was—how to print them! For this reason the National Committee applied to the local printing company, Retický and Vencelides, to undertake the printing of these stamps. The printing house consented but did not have a type-setter employee at that time. I again was invited to help and again complied. How did I accomplish the printing? There were two kinds of stamps that had to be produced, a 120 haler stamp (illustration No. 1) and a 60 haler stamp (illustration No. 2). They were printed in sheets of 20 stamps each. I had to decide whether to print them by using a manually operated printing press or by the use of an automatic mechanism—a Mark Heidelberg. The manual equipment made the work produced more precise but it was time consuming, while when using the automatic mechanism, the gummed paper curled and had to be continually adjusted and smoothed down but the work proceeded much faster and therefore I preferred the use of automatic mechanized equipment. The engraved lead plate was affixed to a small wooden block in a frame which had to be shifted after each application, either in the frame or by shifting the paper. Naturally, the shifts were not quite regular and also the shades of color were not uniform, particularly on the 60 haler blue stamp. On the 120 haler stamp appears The Church of Slavkov, its dimensions are 28 x 39 mm and it is vermilion in color, while the 60 haler stamp views The Peace Monument, has a dimension of 30 x 28 mm and is ultramarine in color. Both of these stamps are imperforate stamps and had a white glue applied to them together with horizontal stripes. The paper was thin and porous but used as it was the only paper in stock. I remember that three sheets were printed on blue colored paper as each hundred sheets of the white paper were separated by the inserted blue sheet."

"How was it that the stamps were marked 'For Slavkov Only'?"

"The postmaster suggested this measure as he intended those stamps to

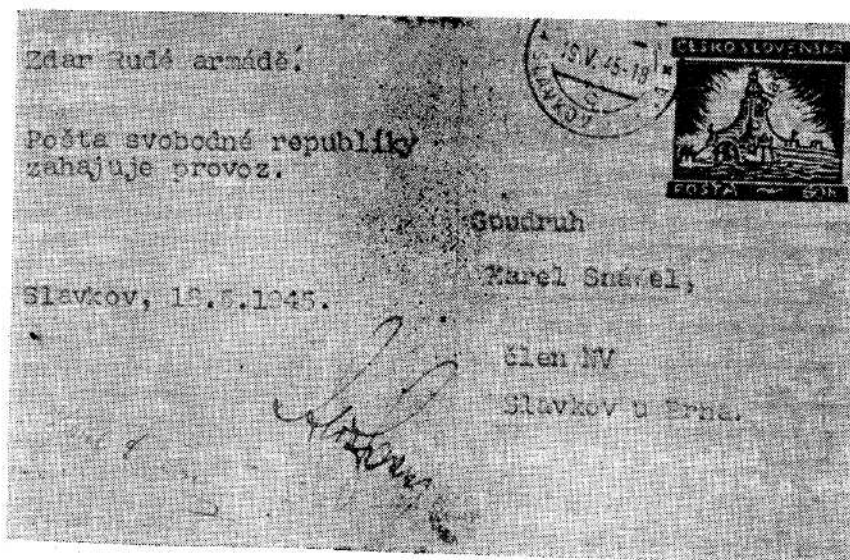


Fig. 3

be used in his district only. These printed words were not made a part of the stamp cliché. On the 120 haler stamp it was imprinted on the whole sheet of 20 stamps, while in the case of the 60 haler stamp, it was done twice in succession, on each set of 10 stamps. The lettering was printed by the use of typewriter letters in a compositor. These lines were applied aslant to the composition and from it they were printed. The printing was in black on both stamps. However, as the size of the stamps were not equal the reprint had to be re-set."

"In Slavkov there was a post-card also printed with the above postage stamp. Did you take part in producing the post-card as well?"

"Yes, I participated in publishing them. The Slavkov post office issued 1000 pieces of these post-cards, of which 500 were dark green in color and 500 pale green in color. The postage stamp on them was produced by the cliché of the 60 haler stamp. On the left half of the top, is the front of the Slavkov Church and at the bottom one can read the text 'Only for Slavkov and its surroundings'."

"For what price were the stamps sold?"

"The vermilion, 120 haler stamp was sold for two Kčs., while the blue 60 haler stamp sold for one Kč. The Slavkov post office began selling the stamps on May 19, 1945, at 8 a.m. On that day the postmaster mailed 30 members of the District National Committee, post-cards with the 60 haler stamp. The text read, 'Hail to the Red Army—The Post Office of the Free Republic inaugurates service. Slavkov—near Brno—19 V 45.' The commemorative cancellation was affixed to the card, signed by the postmaster, Alois Facek," illustration No. 3.

"For how long a period were the Slavkov stamps sold?"

"Both the stamps and post-cards were sold at the Slavkov post office thru May 23, 1945, unless the stock was depleted prior to this date."

"Do you have any further history regarding this undertaking?"

"We were advised that the Brno post office was instructed by the ministry to confiscate the clichés of the stamps and the printed stamps, together

with the commemorative cancellation. The profit of approximately 19,000 Kčs was turned over to the Provisional Moravian National Committee, for their use."

"Is there any other point of interest you might mention concerning the production of the Slavkov stamps?"

"The Soviet Commander's directive catalyzed the entire project of printing the aforementioned stamps, as the directive prohibited the use of Hitler's portrait to appear on any stamps, therefore the project of printing acceptable stamps became a reality. It was also necessary to print four or five official stamps. Naturally, prior to the printing of the stamps and post-cards, different colors were tried and this resulted in various trial colors. The entire project was planned without aspiring to produce a profit for any individual and no speculation occurred. Upon completion of the project an official report was rendered by the printing house on May 18, 1945. The cliches were put under seal and deposited in the safe of the Slavkov post office. I have been invited to speak before philatelic clubs in Brno many times, to present this report on the history of the Slavkov stamps. Upon this occasion the history is being recorded for a philatelic journal. It seems as tho it was only yesterday but 30 years have gone by. The only reward for those of us who participated in this project was the pleasure derived from the accomplished task and our only motive was to render a service to an old renown town, which was the scene of 'Napoleon's Rising Sun of Austerlitz'."

*—Cliche, block of several electros, usually 10, to form a plate.

BALLOT

Election of Five New Directors

In accordance with the provisions of Bylaws IV and V of the SCP, members of the Society are urged to cast their ballot for the election of five (5) directors of the Society to serve a term of four (4) years. The five new directors will serve together with five directors who took office on Jan. 1, 1976, and whose terms of office will expire on Jan. 1, 1980. The new directors will replace directors whose terms of office will expire on Jan. 1, 1978 and who are not eligible for re-election at this time. They include Messrs. George Blizil, Wolfgang Fritsche, Henry Hahn, Edward Lisy and Mirko Vondra.

Brief resumes of nominees are given below.

Charles R. Collins, #1018, Greenbelt, MD

Occupation: Junior High School Principal.

Philatelic Societies: SPA, Washington Collectors Club, President of Capitol-Beltway Postcard Club.

Collecting Interest: Czechoslovakia (especially first 26 issues, FDC), US FDC with U. S. Capitol in stamp or cachet, postal history, post cards and postal cards, Czechoslovakian coins.

Richard M. Major, #1111, Arlington, VA

Occupation: Analyst, U. S. Army (Lt. Col. Ret.)

Philatelic Soc. Activities: Member APS, War Cover Club, Postal History Society, Soc. For Hungarian Philately, Bundesarbeitsgemeinschaft Feldpost 1914-1918, SPECIALIST staff, philatelic author.

Awards: Bronze award, Interpex 1968 and Sepad 1970, Silver award Balpex 1975.

Collecting Interests: Austria-Hungary and WWI Postal History, Austro-Hungarian Naval Field Post, Switzerland, German WWII occupation, Korean War Military Mail, and Scouts on Stamps.

Dominick J. Riccio, #1066, New York City, N. Y.

Occupation: Psychoanalyst.

Philatelic Soc. Activities: Revenue Association, Postal History Society, APS, South Slavic Phil. Soc., lecturer on Carpatho-Ukraine.

Awards: NOJEX '75 Bronze, SCP Bronze (1975).

Collecting Interests: Czechoslovakia specialized, Carpatho-Ukraine, Trieste A., Cuba, Albania, Bulgaria, Prince Edward Island, U. S. Revenues, Norway, Faroe Islands, Iceland, Chess topicals and U. S. tagged covers.

Edward J. Sabol, #1140, Woodbury, New Jersey

Occupation: Owner of Accounting firm.

Philatelic Soc. Activities: G.P.S., Bundesarbeitsgemeinschaft, Editor Pan Slav Bulletin, Treasurer and Director of the Pan-Slav Philatelic Society, member of the Finance Committee of the National Philatelic Museum, Chairman of the Exhibitions Comm. of Lower B. County Youth Week for Stamp and Coins, etc.

Awards: "Best of Show"—CZECHOPEX 1976.

Collecting Interests: Czechoslovakia specialized, Czech Army WWII Field Posts, Slovakia, B&M, S.O., Third Reich as it relates to Czecho and philatelic literature.

Joseph Stein, #330, El Cajon, Calif.

Occupation: Retired.

Philatelic Soc. Activities: SCP elected and appointed offices since its founding, including 12 years on Board, 6 years as Treasurer; Secretary and Chairman of New York Branch at various times up to 1974. Currently President of local (El Cajon) stamp club, SCP Chairman for SEPAD '70, SPECIALIST author.

Awards: Third Prize for Foreign Exhibit, SANDICAL '77.

Collecting Interests: Czechoslovakia, provisional post-WWII, postal history.

Mrs. Joseph (Jane) Sterba, #993, Berwyn, Ill.

Occupation: Retired.

Philatelic Soc. Activities: SCP Director (1974 and 1975); Czechoslovak Specialist editor 1976/7, member A.P.S., Treasurer First Czecho Phil. Club of America.

Awards: Svaz Česk. Fil. award for furthering Czecho philately 1968, Bronze awards at Praga '68, Phylinpia '70 and Indipex '72.

Collecting Interests: Czechoslovakia, Lions Club topical.

Please vote for five on a plain slip of paper. Do not sign ballot, enclose in a plain envelope and seal. Place this envelope in another envelope (bearing your name and membership number) and sent to the Secretary who is also a member of the Election Committee:

Mr. Edward Lisy, 87 Carnita Avenue, Rutherford, NJ 07070

The Secretary will verify your membership from the outer envelope and furnish ONLY unopened inner envelopes to ballot counters. Ballots must be postmarked no later than September 15, 1977.

Please vote to keep the Society strong.

Henry Hahn
President and Member of Election Comm.



(Advertisement)



OF PRAGUE INVITES YOU TO Collect CZECHOSLOVAK STAMPS

And Gives You Ten Fine Reasons Why:

- 1) They'll give you a glimpse into the heart of Europe
- 2) You'll make friends with a people who, in peace, are building a new life for their country
- 3) You'll marvel at the beauty of Czechoslovakia's countryside, extolled by its artists and poets
- 4) You'll become acquainted (or reacquainted) with the old cultural tradition of the Czech and Slovak peoples
- 5) You'll learn of the characteristic fauna and flora of Central Europe
- 6) You'll keep up with the latest in Czechoslovakia's industrial and scientific development, including advanced research
- 7) You'll love their motion—like illustrations of the colorful world of sport
- 8) You'll see why Czechoslovakia has gained international recognition for its advanced techniques of stamp reproduction, harmony of color and outstanding artistry
- 9) They represent the work of their finest artists and engravers
- 10) Czechoslovakia's stamps are neither too large or small—just stamps as stamps should be!

ASK YOUR FAVORITE DEALER!



PUBLIC AUCTION

to be offered at BALPEX 77, on Saturday, Sept. 3, 1977

Mail bids close September 1, 1977

Terms

1. All lots offered as genuine except as noted.
2. Lots will be sold to highest bidder.
3. Lots returnable only if not as described.
4. All lots will be paid for in advance. Lots remain the property of Auctioneer on behalf of seller until such time as lots are paid for.
6. Lots will be available for viewing at Balpex prior to auction. Xerox copies of lots available for \$.25 per lot plus SASA (except covers/collection remnants).
7. Auctioneer reserves the right to refuse ridiculous bids.
8. Bid early and lots of luck!

John Chovan, P. O. Box 331, Glenn Dale, MD 20769

1. SCOUTS, Michel 1 and 2, 1st Printing, Hand applied gum	----	E	\$10/15
2. Siberia Silhouette Issue 1 line per 13%	-----	E	1.00
3. Trial Printing Chainbreaker 20, 25, 30 heller in Rd. 1 pc ptl perf	-----	E	25.00
4. Scott #6-14 Siberia Szekula Forgery Mixed Set	-----	E	-----
5. Scott #61-3	-----	CV	17.75
6. Scott #83 Plt Blk 4 LH, 84 LH DL Bk 10 diff, RH 6 diff	--	E	25.00
7. Scott #71C Imperf	-----	CV	3.00
8. Scott #B137-9 Olymp. Congress 50h Wmk 7, 1K, 2K Wmk 5, lite paper	-----	VF CV	79.00
9. Scott #B137-9 Olympic Congress	-----	VF CV	79.00
10. Scott #B140-3 NH VF	-----	CV	70.00
11. Scott #B140-3 VF	-----	CV	70.00
12. Scott #B133-6 VF	-----	CV	13.50
13. Scott #98-101 Various Wmk 5-7 VF	-----	CV	11.50
14. Scott #102 Wmk 6, 103, 4 VF NH	-----	CV	90.50
15. Scott #106-7 VF	-----	CV	10.25
16. Scott #95-7 Lot 4 sets mixed Wmks F-VF	-----	CV	6.50
17. Scott #129 singles Pl #1, 1A w/o Wmk.	-----	E	2.00
18. Scott. See Lot 17	-----	E	2.00
19. Scott #128 Singles Pl #4, 4a Blk of 4 #3A, 4A VF	-----	E	5.00
20. Scott 131 Pl Blk 4, 14, 14A, 15, 15A, 16, 16A + singles 16, 16A	-----	E	25.00
22. Scott #115 3 Pl bks of 4 pl 2 Wmk 6 and 8	-----	E	9.00
23. Scott #132 Pl Blk 4, pl 1, #136, 137 pl. 4	-----	E	21.00
24. Scott #133, 134, 135 pl singles 1 and 1A of each	-----	E	22.00
25. Scott #200b, 201b singles from NAT'L ANTHEM SHEETS	-----	CV	36.50
26. Scott #B130-2 VF	-----	CV	4.00
27. Scott #61-3 Used	-----	CV	3.60
28. Scott #89-91 VF	-----	CV	11.50
29. Scott #119-22 incl 119a Pl single 1 extra, 120 var. wmk, VF	-----	CV	25.00
30. Scott #137-40 No Wmk, VF	-----	CV	21.00
31. Scott #142-51 NH VF Pl singles	-----	E	12.00
32. Scott #142-51 Used Sml Faults o/w VF	-----	CV	4.90
33. Scott #159-63 Mint VF	-----	CV	9.00
34. Scott #165-7, 183 + shade variety, VF	-----	CV	29.75
35. Scott #159-162 in blk of 4, VF	-----	CV	9.00
36. Scott #159, 60, 63 Pl Bl of 4, VF	-----	E	28.00

37. Scott #152 pl blk 4 3A, 155 Pl. 1, 1A, 156 pl 1, 1A, 157, 2 of 151a Pl. 1, 1A -----	E	11.00
38. Scott #168a, single, pl. singles 1, 1A -----	E	4.00
39. Scott #168a Pl Blk 4 Pl #1A -----	E	10.00
40. Scott 168 single, tab, pl. singles 2, 2A, 5, 5A, Pl blks/4 of #244 -----	E	5.00
41. Scott #169 single, Pl singles of 1 and 1A, Pl blk of 4 of 1A -----	E	7.50
42. Scott 170 single, Pl singles of 1, 3, 3a, 5, & 2 of 5A, pl blk 4 #1 -----	E	3.60
43. Scott #171 2 each of 1K Coil -----	CV	3.50
44. Scott #157-8 Mint NH VF -----	CV	16.25
45. Scott #175-8 Top and Bottom Tabs MNH VF -----	E	48.75
46. Scott #175-8 Used F-VF -----	CV	5.95
47. Scott #184-6 Mint VF Singles -----	CV	8.75
48. Scott #184M single, Bl of 4 w/tabs, blk of 4 oversized by 3mm -----	E	30.00
49. Scott #185 Pl blocks 4 #1, 186 1a -----	E	29.00
50. Scott #187-90 M-VF -----	CV	18.50
51. Scott #187-90 M-VF blks of 4 -----	CV	74.00
52. Scott #191 Pl blk of 4 M-VF -----	E	1.50
53. Scott #192-3 Singles M-VF -----	CV	4.50
54. Scott #194 single, Pl singles 2A, 3A -----	E	2.50
55. Scott #195-8 singles, M-VF -----	CV	5.75
56. Scott Pl singles 202 LL 1, 1a 203 LL 1, 1A, 204, 205 LL & LR 1, 1A, VF -----	E	60.00
57. Scott #159-63 Used VF -----	CV	3.00
58. Scott #C7-9 M-VF -----	CV	10.75
59. Scott #200-1 singles M-VF -----	CV	3.15
60. Scott, see #59 -----	CV	3.15
61. Scott, see #59 -----	CV	3.15
62. Scott #209-11 mint singles and used gutter pairs -----	CV	6.40
63. Scott #206-7 M-VF -----	CV	2.30
64. Scott #206-7 mint single tabs 1, 1A of each -----	E	7.00
65. Scott #C10-17 (17) 2 or 3 of each includes, perf var, color var. and size var. M-VF -----	CV	26.00+
66. Scott #C10-17 used F-VF -----	CV	9.55
67. Scott Pl singles 218-22, 24D 1A (2 each on 221), 220, 222, 223 pl #1 M-VF -----	E	5.50
68. Scott #218, 19, 23, 224, 25 singles, 226 pair mint VF -----	CV	7.00
69. Scott #218-223, 240 mint gutter pairs, VF -----	CV	12.50
70. Scott #218-223, 240 used gutter pairs, VF -----	CV	11.50
71. Scott #B144-6 mint w/STACH TABS, VF -----	E	7.50
72. Scott #B144-6 M-VF -----	CV	3.75
73. Scott #B147-9 M-VF -----	CV	3.50
74. Scott #228-9 TAB Blocks/4 UL, UR, stuck to mount -----	E	4.00
75. Scott #231 matching upper and lower tabs, singles, VF -----	E	7.50
76. Scott #230-1 mint singles and gutter pairs -----	CV	7.50
77. Scott #236-8 mint pairs, VF -----	CV	3.00
78. Scott #239, S/S mint, FDC cancel, show cancel + World Fair OP -----	E	7.50
79. Scott #P26 S/S of 25 M-VF -----	CV	2.00
80. Scott #P26 S/S of 25 w/ '39 World Fair OP -----	E	5.00
81. Scott #251 S/S Mint plus FDC, VF NH -----	CV	5.00
82. Scott #235 Pair singles plus upper, center, lower tabs L&R -----	E	3.50
83. Scott #235 UL, UR Tab Blk of 4 plus center single tabs -----	E	3.00
84. Scott #241, 2 2 pair, plus 241 one left tab 2 right, 242 1 right 2 left, M-VF -----	E	5.50

85.	Scott #B150-2 singles and S/S M VF	CV	4.50
86.	Scott #B150-2 singles, left and right tabs plus S/S M VF	E	8.50
87.	Scott #B152 one mint, one used, VF	CV	7.50
88.	Scott B150-1 block of 4 left double tabs right single tabs, small remnant on backs	E	11.50
89.	Scott #243 tab blk 9 left, tab blk 4 left, #244 tab blk 4 upper left, right same 244, selvage creased	E	4.65
90.	Scott #249-50 Gutter strips of 4 each MNH VF	E	4.00
91.	Scott #246-8 upper right and left blks of 8 with 3 tabs exc 247 UL (6) some remnants on selvage o/w VF	E	16.00
92.	Scott #253-4, B153 singles L and R tab plus S/S	E	5.75
93.	Scott #253-4 blocks of 4 perf separation, VF	CV	3.00
94.	Scott #B153 mint and used, VF	CV	6.00
95.	Scott #255 blocks of 4 mint, VF	CV	32.00
96.	Scott #76, 77(2), 78, 79(2), 80(2), 81(2) regular and color variations, M-VF	CV	55.30
97.	1943 London Exhibition Sheet	E	12.00
98.	4-29-45 Prague Locals (7)-F Novotny	E	----
99.	Locals — Unknown origin (10)	E	----
100.	Scott #307-9 Plate singles A-1	E	7.75
101.	Scott #307-9 Blocks of 4 + color variations (6 blacks)	E	25.00
102.	Scott #307-9 Vert. Gutter Strips of 4	E	15.00
103.	Scott #307-9 Vert. Gutter Strips	E	15.00
104.	Scott #307-9 Horiz. Gutter strip of 4 M-NH VF	E	40.00
105.	Scott #307-9 Horiz. Gutter strip of 4 M-NH VF	E	40.00
106.	Scott #307-9 Large Cross of 16. MNH VF	E	250.00
107.	Scott #310 S/S MNH VF	CV	1.25
108.	Scott #310 S/S MNH VF	CV	1.25
109.	Scott #311-4 Plate singles	E	17.00
110.	Scott #311-4 Blocks of 4 plus color var (8 blocks) MNH VF	CV	45.00
111.	Scott #266-71A Blocks of 4 Type II, GRAFIA MNH VF	CV	4.36
112.	Scott #266, 268, 269, 270, 271 Blks of 4 Type I Andre, MNH VF	CV	2.00
113.	Scott #262A-65 Blocks of 4, VF	CV	3.00
114.	Scott #272-87 Blocks of 4, VF	CV	8.00
115.	Scott #292a S/S, VF	CV	15.00
116.	Scott #292a S/S used on cover, fine	CV	15.00
117.	Scott #288-92 Block of 4 MNH VF	CV	7.00
118.	Scott #293-304 Blocks of 4, M-VF	CV	14.00
119.	See lot 118	CV	14.00
120.	See lot 118	CV	14.30
121.	Scott #B154-5 single and upper blocks of 4 M VF	CV	2.25
122.	Scott #305-6 blocks of 4 Mint M VF	CV	2.00
123.	Scott #B156-7 Strips of 5 w/Tab MNH VF	E	7.50
124.	See lot 123	E	7.50
125.	Scott #315 left and right blocks of 4 w/2 Tabs M VF	E	3.00
126.	Scott #316-7 blocks of 4	CV	2.80
127.	Scott #317 Block of 8 MNH VF Small Remnant on selvage	CV	4.00
128.	Scott #B160-2 Blocks of 6 MNH VF	CV	8.00
129.	Scott #318-21 Block of 6 MNH VF	CV	3.00
130.	Scott #322-4 Lower left, lower right tab blocks of 4 M VF	E	4.50
131.	Scott #326-8 singles and blocks of 4 M VF	CV	8.50
132.	Scott #B158(1), B159(2) S/S M NH VF	CV	2.25

133.	Scott #EX3 Pair plus block of 8 M VF -----	CV	2.50
134.	Scott #C19-27 Except C25 blocks of 4 MNH VF -----	CV	41.40
135.	Scott C19-27 corner and tab blocks of 4 upper and lower left exc. C21, 5 more remnants on back 3 blocks -----	E	95.00
136.	Scott #C28-35 block of 4 mint NH VF -----	CV	28.00
137.	Scott #C28-35 corners and Tab blocks of 4 lower L R MNH VF E		78.00
138.	Scott #C28-35 singles mint NH VF -----	CV	7.00
139.	Scott #C36-9 block of 4—Blk paper remnants on back o/w VF CV		36.60
140.	Scott #J75, 77, 81 singles J70-81 blk 4 MNH VF -----	CV	23.70
141.	Scott #O1-7 plus 8-15 block of 4 MNH VF -----	CV	8.00
142.	Scott #329-31 Tab block of 6 MNH VF -----	E	13.00
143.	Scott #332-3 singles plus blocks of 4 MNH VF -----	CV	4.50
144.	Scott #334-5 singles, single tabs, blk 4 w/left and right tabs E		28.00
145.	Scott #336-7 blocks of 4 MNH VF -----	CV	3.00
146.	Scott #336-7 Block of 4 plus tabs upper and lower right ---	E	21.00
147.	Scott #338-9 Blocks of 4 Mint VF -----	CV	2.80
148.	Scott #346-9 Tab blocks of 6 MNH VF -----	E	36.00
149.	Scott #343-5 Tab blocks of 6 W/2 Tabs MNH VF -----	E	22.00
150.	Scott #351-4 singles plus blocks of 6 w/2 tabs LL, LR MNH VF E		15.00
151.	Scott #351-4 blocks of 6 w/1 Tab upper R, upper L MNH VF E		14.00
152.	Scott #355-6 singles plus block of 6 w/2 tabs LL, LR MNH VF E		5.25
153.	Scott #355-6 Blocks of 6 w/1 tab UL, UR MNH VF -----	E	2.50
154.	Scott #357-9 singles plus blocks of 6 w/2 tabs LL, LR MNH VF E		15.00
155.	Scott #357-9 singles plus block of 6 w/1 tab UL, UR MNH VF E		12.00
156.	Scott #363-5 singles 364a singles plus blk 4 MNH VF -----	CV	2.90
157.	Scott #361-2 singles plus blk 6 w/2 tabs UR, LR MNH VF --	E	5.00
158.	Scott #361-2 singles plus blk 9 w/2 tabs UL LL MNH VF --	E	9.00
159.	Scott #366 blocks of 6 w/2 tabs LL, LR MNH VF -----	E	9.00
160.	Scott #366 One blk 4, 2 blks 4 w/1 tab UR, UL, MNH VF --	E	9.00
161.	Scott #367 S/S (7) SB different var, MNH VF -----	CV	12.15
162.	Scott #B163-5 singles plus blk 6 w/2 tabs LL, LR MNH VF E		6.00
163.	Scott #369 Strip 21 bottom and top MNH VF -----	E	7.50
164.	Scott #368, S/S 11 MNH VF Excellent for var. study ----	CV	6.60
165.	Scott #88 Mint Comb Perf, VF -----	E	-----
166.	Scott #86 Mint, VF -----	CV	3.00
167.	Scott #109-11 Centering slightly off M-F -----	CV	6.75
168.	Scott #110-11 Centering slightly off M-F -----	CV	5.25
169.	Scott #135 2½ blue, mint tiny thin o/w F-VF -----	CV	10.00
170.	Scott #111 (3) diff wmk and color shades -----	CV	12.00
171.	Scott #114, 118 Mint VF -----	CV	8.50
172.	1948 Reprint of No. 2 in blocks 4, 3 mint 3 w/FDC -----	E	6.00
173.	Scott #370-1 Singles, Single corner, blk 6 w/1 tab, blocks 6 w/2 tabs LL LR -----	E	13.00
174.	Scott #372B 2 singles 3 corner blocks 4 of 3K 2 singles 2 block w/1 tab UR UL 2 blks 6 w/2 tabs LL LR MNH VF -----	E	11.00
175.	Scott #374-9 Singles and margin blocks 4LL, LR MNH VF --	CV	5.80
176.	Scott #380-2 Margin blocks of 4 LL, LR exc 3K II MNH VF CV		22.20
177.	Scott #380-2 Singles MNH VF -----	CV	3.40
178.	Scott #383-5 Singles plus blocks of 6 w/2 tabs LL, LR, MNH VF E		38.00
179.	Scott #386-7 Singles + corner blk 4, 1½K LL, LR, 5K LL(2) MNH VF -----	CV	9.00
180.	Scott #388 Single, blk 4, corner blocks 4 LL, LR MNH VF CV		3.25
181.	Scott #389-90 Singles corner blocks of 4 LL, LR MNH VF --	CV	9.00

182.	Scott #391-2 blocks of 4 MNH VF -----	CV	2.80
183.	Scott #391-2 Singles plus blocks of 4 MNH VF -----	CV	3.50
184.	Scott #393 Pair plus corner blk of 4 LL, LR MNH VF ----	CV	6.00
185.	Scott #394-6 corner block 4 LL MNH VF -----	CV	22.40
186.	Scott #394-6 Used corner block 4 UR -----	CV	5.00
187.	Scott #397-8 Singles plus block of 4 MNH VF -----	CV	9.50
188.	Scott #402-3 Corner blocks of 4 LL, LR MNH VF -----	CV	19.20
189.	Scott #401-3 Corner blocks of 4 w/FDC UR VF -----	E	10.00
190.	Scott #404-5 MNH VF singles -----	CV	2.50
191.	Scott #410-13 Singles plus corner blks of 4 LL, LR -----	CV	13.50
192.	Scott #416-17 Singles plus corner blks of 4, LL -----	CV	6.00
193.	Scott #418-21 Singles + corner blks 4 LL. Sml remnant 1 blk	CV	6.75
194.	Scott #422-3 Singles plus corner blks of 4 LL LR -----	CV	9.45
195.	Scott #424-5 Singlues plus corner blks of 4 LL -----	CV	3.25
196.	Scott #424-5 4 sets singles -----	CV	2.60
197.	Scott #426-9 Block of 4 MNH VF -----	CV	6.50
198.	Scott #426-9 Block of 4 w/tabs MNH VF -----	CV	6.50
199.	Scott #430-1 blocks of 4 MNH VF -----	CV	2.12
200.	Scott #432-3 Blocks of 4 plus corner blks of 4 LR -----	CV	7.60
201.	Scott #434, 35, 34a singles, plus corner block of 4 LL, LR S/S mint plus FDC -----	CV	7.22
202.	Scott #440-1 Singles corner blk of 4 LL, LR MNH VF ----	CV	7.20
203.	Scott #442-4 Singles blk of 4 + corner blk 4 LL, LR MNH VF	CV	9.75
204.	Scott #445-7 Singles blk of 4 MNH VF -----	CV	5.15
205.	Scott #448-9 Corner blocks of 4 LL LR MNH VF -----	CV	3.60
206.	Scott #450-1 Corner blocks of 4 LL LR MNH VF -----	CV	5.60
207.	Scott #479-81 Singles, blocks 4, corner blks 4 LL. Paper remnants on 3 blks -----	CV	7.20
208.	Scott #482-6 Singles, corner blocks of 4 LL, LR MNH VF -	CV	15.20
209.	Scott #487-9 Singles, corner blocks of 4 various positions, small remnants -----	CV	3.00
210.	Scott #491-2 Corner blocks of 4 UL MNH VF -----	CV	2.00
211.	Scott #493-4 Singles, block of 4 MNH VF -----	CV	2.25
212.	Scott #495-6 Singles plus corner blocks of 4 LL MNH VF -	CV	3.50
213.	Scott #497-8 Singles plus corner block of 4 UL MNH VF --	CV	2.50
214.	Scott #499-500 Singles plus block of 4 MNH VF -----	CV	6.50
215.	Scott #501-3 Singles plus block of 4 MNH VF -----	CV	2.50
216.	Scott #504-6 Singles plus corner blk of 4 LL MNH -----	CV	3.05
217.	Scott #512-15 Singles plus blks of 4 MNH -----	CV	5.75
218.	Scott #516-188 Singles plus blks of 5 MNH -----	CV	3.75
219.	Scott #523-5/526-8 Singles plus blks of 4 MNH -----	CV	9.00
220.	Scott #529-31 Singles plus blks of 4 MNH -----	CV	5.55
221.	Scott #532-3, 534-6 Singles plus blks of 4 MNH -----	CV	6.50
222.	Scott #537-9 Singles plus blks 4 Sml stain on 3K single -	CV	4.00
223.	Scott #540-3 Singles plus blks of 4 MNH VF -----	CV	14.75
224.	Scott #556 S/S Bratislava 1952 MNH VF -----	CV	12.50
225.	Same as 224 -----	CV	12.50
226.	Same as 224 -----	CV	12.50
227.	Scott #557, 558-9, 560-1 Singles plus blks of 4 MNH VF --	CV	6.25
228.	Scott #562-3, 565-6 Singles plus blks of 4 MNH VF -----	CV	4.50
229.	Scott #567-8 Singles plus blks of 4 MNH VF -----	CV	2.25
230.	Scott #571-5 Singles plus blks of 4 MNH VF -----	CV	6.25
231.	Scott #576-8, 579 Singles plus blks of 4 MNH VF -----	CV	6.25

232.	Scott #581, 582-3, 587, 588 Singles plus blks of 4 MNH VF	CV	3.90
233.	Scott #584-6, Singles, blks of 4 plus S/S (2 each)	CV	2.65
234.	Scott #589-92 Singles, blks of 4 mint NH VF	CV	5.05
235.	Scott #593-4 Singles, blks of 4 Mint NH VF	CV	6.00
236.	Scott #598-9 Singles, blks of 4 Mint NH VF	CV	5.00
237.	Scott #600-604 Exc 603 Singles, blks of 4 Mint NH VF	CV	8.00
238.	Scott #605-6, 607-8 Singles, blks of 4 Mint NH VF	CV	6.90
239.	Scott #609-10, 617-8 Singles, blks of 4 Mint NH VF	CV	6.50
240.	Scott #615-6 Singles, blks of 4 mint NH VF	CV	5.00
241.	Scott #619, 620 Singles, blks 4 MNH VF (no single 620)	CV	20.75
242.	Scott #621-3 Singles plus blk of 4 MNH VF	CV	16.25
243.	Scott #624-6 Singles plus blk of 4 MNH VF	CV	10.00
244.	Scott #631-2, 633-4 Singles plus blk of 4 MNH VF	CV	9.50
245.	Scott #635-6, 637-8 in corner blk of 4	CV	10.40
246.	Scott #639-41 in corner blk of 4	CV	5.00
247.	Scott #642-4 Singles and corner blk of 4	CV	17.20
248.	Scott #646, 648, 9, 651-7 Singles and corner blk of 4	CV	26.25
249.	Remainder of collection 1919-1952 on 52 pages mint and used includes singles, tabs, plates, block, etc. approx. 650 stamps. Should be examined	E	150.00
250.	Group of 20 different show cancels on sets, S/S, folders FDC's 1928-1940, very attractive lot	E	35/40.00
251.	Same as above. 11 items 1945-1950	E	25.00
252.	Covers 1945-8 FDC and commercial all philatelic w/better sets, S/S, 17 diff., one not cancelled	E	25.00
253.	FFC Praha/NY (3) NY Praha + 1 cover w/C19, 20, 22, 23, 24, 26, 27	E	15.00
254.	Covers, lot of 16 different MASARYK commem 9/21/37	E	20.00
255.	Covers, lot of 5 includes better items between 307-14	E	15.00
256.	Covers, 50 commercial includes compl. sets of philatelic 1930-45	E	10.00
257.	Covers, 50 commercial includes compl. sets and S/S	E	10.00
258.	Covers, 60 commercial includes compl. sets	E	12.00
259.	Covers, 60 commercial includes compl. sets	E	12.00
260.	Covers, Slovakia 19 diff. several w/airmail issues	E	25.00
261.	FDC's 25 different 1952-6	E	8.00
262.	FDC's 25 different 1952-6 almost same as #261	E	8.00
263.	FDC's 30 different 1949-56	E	10.00
264.	FDC's 30 different 1949-56 almost same as #263	E	10.00
265.	FDC's 30 different 1949-56	E	10.00
266.	FDC's 30 different 1949-56	E	10.00
267.	FDC's 30 different 1949-56	E	10.00
268.	FDC's 23 different 1949-56	E	8.00
269.	FDC 434, a, 435 FDC plus Commercial Cover 434a	E	5.00
270.	FDC 719 Prague EXH S/S 1955, mailing creases	E	20.00
271.	Same as 270	E	20.00
272.	Same as 270	E	20.00
273.	Carpatho Ukraine #1 single plus blk 4 MNH VF	CV	12.20
274.	Slovakia Scott #1 single, blk 4, blk 4 w/1 tab MNH VF	E	5.60
275.	Scott #1 blk 4, blk 4 plus 2 tabs top, ditto bottom	E	9.00
276.	Scott 31 single PL A4 R, 32 A2 LL, 33 A2 L and R	E	9.25
277.	Father JEHLICZKA 1921, 2 blks of 4 diff. shades	E	10.00
278.	Scott #2-22 Mostly stuck to mount or w/paper remnants Exc 21	CV	54.00
279.	Scott #23 MNH slight shift to left fine/VF	CV	62.50

280.	Scott #24, 24a, 24b plus ptl rouletted sml remnant on 24a	CV	5.00
281.	Scott #28a, 29a margin pairs plus LL Pl Bl 4 A1 MNH VF	E	7.00
282.	Scott #24, 25 Pl blk of 4, A1, LR 24 gum thins o/w VF	----	E 16.50
283.	Scott #26-33, 2 sets singles, mixture pl pairs, blks 4, Pl Blks 4 A1 some small faults	-----	E 32.00
284.	Scott #55-7 plus a's singles blks 4 MNH VF	-----	CV 8.75
285.	Scott #34-7 blk of 4 and 6 exc 36, 2 blks 4 MNH VF	-----	CV 17.10
286.	Scott #38-9 singles in col. var. corner blk. 438, Pl Blk of 4 LL A1 sml faults o/w VF	-----	E 3.50
287.	Scott #40-2a, 2 ea singles ex 42, blk 4 40, 42, Pl blk 4 40-42a MNH VF	-----	E 53.50
288.	Scott #B1 singles plus blk 4 MNH VF	-----	CV 10.00
289.	Scott #B1 singles plus blk 4 MNH VF	-----	CV 10.00
290.	Scott #44 blk 4, roulette blk 4 + Pl blk 6 LL A1 MNH VF	E	13.00
291.	Scott #62-L/2 singles + matching corner blks of 4 MNH VF	E	150.50
292.	Scott B2-4 blks of 4 B5-7 corner blk of 4 MNH VF	-----	CV 13.25
293.	Scott B8-10, B11-13 singles plus cover blks of 4 MNH VF	----	CV 8.35
294.	Scott #70-3 singles plus corner blks of 4 MNH VF	-----	CV 10.00
295.	Scott #74-6 singles, plate singles plus corner blk 4 2K, Pl blk 4 70h/1.3K MNH VF	-----	E 24.00
296.	Scott #77-82, 89-92 singles + corner blks of 4 incl color var. MNH VF	-----	CV 8.45
297.	Scott B14-16 singles plus corner blk 4, B17-20 singles plus tab blk of 4 MNH VF	-----	CV 10.00
298.	Scott #95-102 singles plus blk of 4 MNH VF	-----	CV 11.95
299.	Scott B21-4 singles plus corner blks 4 MNH VF	-----	CV 10.50
300.	Scott #108-9 B25-6 2 sets singles plus blks of 4 MNH VF	CV	7.92
301.	Scott #110-15 2 sets singles, tab blks 4, gutter strip 4 #115 MNH VF	-----	E 25.00
302.	Scott B27 single w/tab gutter pair plus S/S MNH VF	-----	E 27.50
303.	Scott C1-6 Pl No. blks of 4 A1, LL MNH VF	-----	E 14.00
304.	Scott C7-9 Pl No. blks of 4 A1, LL MNH VF	-----	E 10.00
305.	Scott J1-2 singles tiny thin J8 ow/VF	-----	CV 52.15
306.	Scott J13-23 singles VF	-----	CV 15.24
307.	Scott J2, 3, 5 Corner Pl. blks of 4 LL #1 MNH VF	-----	E 4.50
308.	Scott J24-38 singles w/tab Pl Nos. MNH VF	-----	E 20.00
309.	Scott P1-9 singles plus Pl. singles LR VF	-----	E 18.00
310.	Scott P12-18 singles, P20-30 singles plus blk 4 MNH VF	----	CV 11.51
311.	Scott P31-6 singles plus blk 4 MNH VF	-----	CV 8.05
312.	Bohemia Moravia Scott #1-19 VF	-----	CV 25.00
313.	Scott #20-26 Top gutter strips of MNH VF minor gum dist one margin	-----	E 80.00
314.	Scott #25 gutter strip of 4, VF	-----	E 10.00
315.	Scott #35 STAR singles tabs L, R, corner, 36 26, R, 37L, 38 single plus tab, 39 L tab	-----	E 11.00
316.	Scott #B1-2 singles, single tabs L and R, B3-4 singles plus blk 4 w/ 2 tabs	-----	E 7.00
317.	Scott #54-5 Single tabs, L, R, gutter pairs, corner blks 9 w/ 4 tabs (small tear on one)	-----	E 3.00
318.	Scott J1-4 Top gutter strips of 2	-----	E 15.00
319.	Remainder of Boh and Mor/Slovakia collection on pages. Low- priced sets and singles in tabs, blks 4, tabs, all mint and in mounts. Should be examined	-----	ECV 75/80

SOCIETY FOR CZECHOSLOVAK PHILATELY, INC.**BOARD MEMBERS AND ELECTED OFFICERS****PRESIDENT:**

Henry Hahn, 2936 Rosemoor Lane, Fairfax, Va. 22030

VICE PRESIDENT:

Wolfgang Fritzsche, Box 8, Canandaigua, N. Y. 14424

NATIONAL SECRETARY:

Edward Lisý, 87 Carmita Ave., Rutherford, N. J. 07070

TREASURER:

Henry Samek, Jr., 138 Burlington Ave., Paterson, N. J. 07502

OTHER BOARD MEMBERS

George A. Blizil, 5208 Jackson St., Hollywood, Fla. 33021

Dr. L. V. Fischmeister, V. A. Hospital, Augusta, Ga. 30904

Richard Gray, 3466 Mildred Drive, Falls Church, Va. 22042

George B. Koplowitz, P. O. Box 183, Brooklyn, N. Y. 11218

Jaroslav Verner, Kabul (IS), Dept. of State, Washington, D. C. 20502

APPOINTED OFFICERS**EDITOR:**

Mrs. Joseph F. Sterba, 6624 Windsor Ave., Berwyn, Ill. 60402

MANAGING EDITOR:

Harlan W. Miller, 821 Vermont St., Lawrence, Kans. 66044

SALES MANAGER:

Wolfgang Fritzsche, Box 8, Canandaigua, N. Y. 14424

LIBRARIAN:

Jay T. Carrigan, 12448 Over Ridge Rd., Potomac, Md. 20854

ASSISTANT LIBRARIAN:

Ladislav H. Vydra, P. O. Box 1143, Rockville, Md. 20850

ADVERTISING RATES OF THE SPECIALIST

Amount of space	Consecutive in			
	One issue	Three issues	Five issues	Ten issues
Full page	\$16.00	\$45.00	\$70.00	\$130.00
Half page	11.00	30.00	42.50	90.00
Quarter page	7.50	21.00	32.50	60.00
Eighth page	5.00	14.00	22.50	42.50

ADVERTISERS NOTE:

1. A 10% discount is given to members of the Society if ad is prepaid.
2. All cuts, mats, etc., will be furnished by the advertiser. Advertisers furnishing typed copy and requiring art work and cuts will be billed separately.
3. For additional information or to place your ad, write to the Editor.

From the President's Stock Book

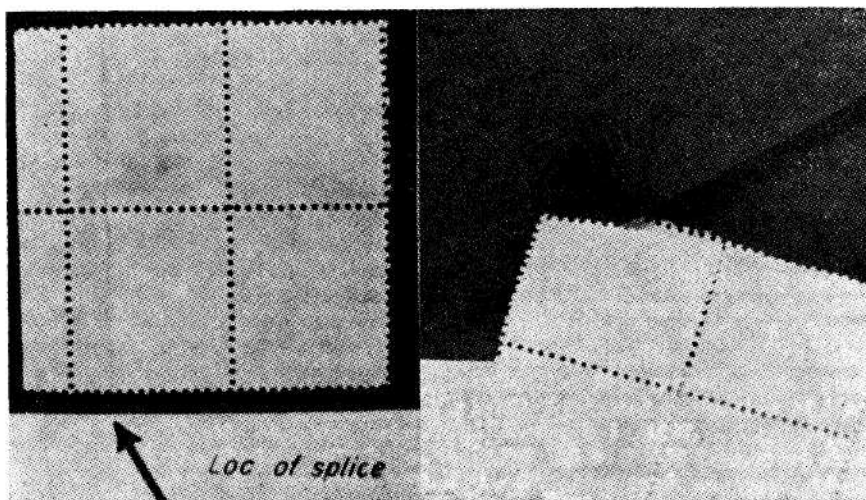
Henry Hahn, 2936 Rosemoor Lane, Fairfax, VA 22030

It seems that our mail has been particularly heavy for this time of year, and without exception it has been happy and interesting mail. Somehow our most prolific correspondents are those who live far away from the Washington, D.C. area. I suppose that those closer feel they aren't getting their bucks-worth mailing a letter just a couple of hundred miles or so.

Stig Asklund (Nairobi, Kenya) is re-settled, though his stamps are still in Sweden. Alex McMillan (Auckland, New Zealand) and Yvonne King (England) are planning to send exhibits to BALPEX, and Tom Austin (San Jose, Costa Rica) will not only exhibit but also attend. Better yet, the Austins will be our house guests over the week-end. Vaclav Vanik (Chicago) writes about exhibiting 20! frames at BALPEX (just to prove that ALL his stamps aren't in his auction) and Karel Lipa (Oak Park, Mich.) will attend with his Mrs. and of course exhibit. I won't mention the many New Yorkers, Jerseyites and Washingtonians applying for BALPEX frames—so if you plan to exhibit and have yet to apply. NOW may be your last chance.

Among the letters I received one asks for an explanation of "nastavený papír," (extended paper) which refers to a paper roll splice. Stamps printed over the actual splice are generally discarded in printing—though one often sees them in Czech collections. Such splices may occur in rotary as well as flat plate printed stamps. I have such splices in the 1918 Scout stamps, which were embossed, printed and die cut from a two-subject plate onto a paper roll about 3½ inches wide. Half of the stamp has double paper, the lower portion showing only the albino embossing. A splice in a flat plate printed stamp, the third Masaryk engraving (August, 1925), was somewhat easier to show photographically, since I have a block of 4. The splice is easily seen and shown here. The double paper to the right of the splice is shown by inserting a black sheet between the double paper.

Any ideas of how to show the double paper on your album page without damaging the item or giving a wordy explanation?



Editor's Gazette

By Jane Sterba, 6624 Windsor Ave., Berwyn, Ill. 60402

This is our final Specialist until fall. It hardly seems possible that one year has gone by since we held our last annual convention in May, in Philadelphia, during Interphil-76. Our SCP board meetings, auctions and get-togethers in Philadelphia were really very enjoyable and constructive. I think we all left Philadelphia with pleasant memories of our Society, about our fellow collectors and friends. This coming Labor Day week-end, Sept. 3, 4 and 5, we are again having our annual convention and board meeting at Balpex-77. The officers, members of the board of directors and your editor are looking forward to seeing and meeting many of our members in Baltimore. The plans are being finalized by chairman, Dick Major. You will be able to purchase special covers, which are in the process of being designed, at Balpex or order them direct from Dick Major, via mail. In our May Specialist the prospectus for Balpex-77 was enclosed. Forward your entry as soon as possible. PLEASE DO NOT PUT THIS OFF UNTIL LATER. We have received word that SCP members Alec McMillan of New Zealand and Tom Austin of Costa Rica are sending in exhibits. There may also be exhibits from Germany and England. With all your support, Balpex-77 may turn out to be the largest Czechoslovak philatelic show in the United States in recent years. If need be and possible Dick Major can ask for more than the 100 frames allotted our Society, so please send in your prospectus today. Forward prospectus to Dick Major, P. O. Box 4074, Arlington, Va. 22204. If you have misplaced your prospectus, please write to Dick and he will forward another copy to you. Please check page 74 in your May Specialist. Forward the information requested if you are going to attend, so that the committee can proceed to make final arrangements for you, in order to make your stay at Balpex-77 a pleasant one. We are all looking forward to seeing you in attendance, if at all possible.

If you cannot meet with us, but have any suggestions or ideas which you want brought before the Society board, please mail your recommendations to Henry Hahn, President, any member of the board or to your editor, as we all would be happy to bring the matter to the attention of the board members present, at our annual meeting, for an open discussion rather than trying to handle discussions on matters concerning our Society via the mails.

This past year I have served as editor of our Society's Journal. I hope you have been satisfied with my endeavors. The phrase "Thank You" seems so small and insignificant in connection with those members who have contributed so much in assisting your editor, in so many ways, to make our Specialist what it is today. We cannot go back over the years and mention all our contributors, although their efforts cannot be forgotten.

President Henry Hahn's idea (when he was editor) to have SCP member Roger Richet's book, which was written in French, on the Issues, Surcharges, Cancellations and Vignettes of the Sudetenland translated into English was noteworthy. The philatelic knowledge derived by our members after reading and studying the article, especially those who enjoy "specializing in philately" was extensive. The work Anne Vondra did to translate an entire book was certainly more worthy than the words "THANK YOU" can convey. On behalf of the Society, officers and members, we can only extend our Grand Prix of Honor to you, Anne. Your devotion and work has been appreciated.

Your editor would also like to extend special thanks to the following

Society members: William Ittel, Mirko Vondra, Wolfgang Fritzsche, George C. Kobylka, Charles Chesloe, L. H. Vydra, Henry Samek, Edward Lisy, Dick Major, Melvin F. Klozar, J. T. Carrigan, William Schoenig, Yvonne King, Gerald M. Van Zanten, and J. J. Verner.

To our honorary member, Zdenek Kvasnicka, our appreciation for forwarding his informative philatelic articles to us, as well as Hynek Ondrasek, Ing. Vladimir Feldman and JUDr. Jan Kostelka, for their outstanding contributions to philately and our Society.

Another great asset to our Specialist is the support of our ADVERTISERS. If it is possible, please support them, as they are supporting us.

It may seem strange that I have mentioned every one (I hope that I have not overlooked anyone) who have contributed their support to your editor and our Specialist, in some manner or form. I feel these few words of thanks is the least that can be offered them on your editor's and your behalf.

Last on our list, BUT THE MOST IMPORTANT, is Harlan W. Miller, our Managing Editor. He is the man that does the work, after the work by all of us is completed. On behalf of all our members (especially the editor) the words Thank You seem so inexpressive for the cooperation and kindness extended by him and Mrs. Miller.

CAPEX-78:

Capex-78 the forthcoming North American International Philatelic Exhibition to be held in Toronto, Ontario, from June 9th to 18th, 1978, has issued magazine #1. Our United States Commissioners are as follows: East—Dr. R. M. Rosende, Apt. 3K, 50 Riverdale Avenue, Yonkers, N. Y. 10701; East Central—Dr. R. V. C. Carr, 117 Robin Hood Way, Sherwood Forest, Youngstown, Ohio 44511; Mid-West—James E. Duffy, Jr., 142 Highwood Ave., Highwood, Ill. 60040; South—Joe F. Frye, P. O. Box 22308, Memphis, Tenn. 38122; South-West—Emerson A. Clark, P. O. Box 6788, Burbank, Calif. 91510; North West—George M. Martin, 216 South 28th Ave., Yakima, Wash. 98902. Please request provisional entry form from your area's commissioner. This provisional entry must be returned to the commissioner not later than August 1st, 1977 if you wish your philatelic entry to be considered for the exhibition.

PRAGA-78:

SCP member and past president of our Society, Dr. James J. Matejka, Jr., has been appointed United States Commissioner to PRAGA-78, The International Philatelic Exhibition to be held in Prague, Czechoslovakia, during August of 1978. This announcement has been confirmed by President Emerson A. Clark and the Executive Secretary, James T. DeVoss of the American Philatelic Society. The American Philatelic Society is the official organization in the United States that is the representative to FIP (International Federation of Philately) under whose auspices PRAGA-78 is to be staged.

Dr. Matejka is considered well versed in staging and also working with national and international exhibitions. He is co-founder of COMPEX (Combined Philatelic Exhibition of Chicagoland) which began in 1958 and is now nearly celebrating their 20th Anniversary celebration. He was Awards Chairman of the recent United States International Philatelic Exhibition—INTERPHIL-76—as well as being United States Commissioner to BELGICA in 1972 and AMPHILEX in 1967, in Brussels and Amsterdam, Netherlands, respect-

ively. Currently, Dr. Matejka is a member of the Postmaster General's Citizens Stamp Advisory Committee and Secretary-Treasurer of the Chicagoland Czechoslovak Philatelic Society.

The American Philatelic Society has appointed SCP member Wolfgang Fritzsche of Canandaigua, N. Y. as the Eastern representative and SCP member C. J. Pearce of Coalgate, Okla., as the Western Representative. Dr. Matejka appointed Joseph Vondrak, of Roselle, Illinois, as his executive assistant. All are members of the American Philatelic Society.

Information to the press and prospectus to those that wish to exhibit will be forthcoming as details arrive from Prague. To expedite matters, Dr. James Matejka and Bernard Henning, also member of our Society and the A.P.S. representative to F.I.P. will be in Prague in August of this year to finalize plans which will make PRAGA-78 THE MOST INTERESTING EXHIBITION, from both the exhibitor's as well as the visitor's standpoint.

As has been reported previously in our Specialist, an official group flight to Prague, just prior to the opening of the exhibition, is being planned. Since the cost of this flight will be extremely low, it would be worth while for all those that plan to attend PRAGA-78 to delay finalizing any arrangements, until complete details of our Society's official flight is known and published in the Specialist.

Those interested in exhibiting at PRAGA-78, which will be made up of approximately 7,000 frames, please write to Dr. James J. Matejka, Jr., Commissioner to PRAGA-78, 2015 Midland Building, 176 West Adams Street, Chicago, Illinois 60608.

Congratulations to Dr. Matejka, as well as SCP members Wolfgang Fritzsche, C. J. Pearce and Joseph Vondrak. May all your endeavors prove that PRAGA-78 will be best and most outstanding Philatelic Exhibition.

REPORT FROM PRAGUE VIA HAMBURG:

Easter in Prague this year was more like Christmas, at least as far as the weather was concerned. Snow started falling on Good Friday and continued for three full days. Easter morn witnessed at least 6 inches of snow on the ground and it kept coming through most of that day. But weather did not matter much to the ardent stamp collector. On Saturday morning he could, and we did, attend the opening of a stamp exhibit in Kladno. This exhibit was a joint undertaking of the Union of Czechoslovak Philatelists and the Union of German Philatelists (West Germany). While the show consisted of only 73 exhibits, there were many interesting collections, all concentrating on either Czechoslovak or German materials.

While this small exhibit was well worth viewing, most philatelists with whom I spoke were more interested in the preparations being made for Praga 78. I must confess that I too was interested in what I could learn about plans for the show, described by the organizers as a "World Stamp Exhibit." In fact this interest was one of our main reasons for going to Prague and, since the Society is planning rather extensive participation in this show, and hopefully many of our members will attend, it seem reasonable to share with you what I learned. During my visit I had the opportunity to speak extensively with the President of the "Svaz Československých Filatelistů," Ing. Ladislav Dvořáček, as well as with Dr. František Švarc, President of the "Svaz Českých Filatelistů" and Chairman of the Organizing Committee of Praga 78. I was told that much of what follows will be made public only at a press conference at Amphilex in late May.

It was on March 3 of this year that the government of Czechoslovakia officially approved Praga 78 and authorized its 45 million Kčs budget. With this approval, contracts for design could be let. The funds for this exhibit will come from the sale of Praga stamps through the Philatelic Division of the Ministry of Posts. Plans, of course, had not waited for official approval. And if plans are any indication of what we can expect, Praga 78 should be quite a show.

As the last two Praga shows, this one is again planned for Julius Fučík Park (collections by country and literature), the Brussels Pavilion (youth and thematic collections), and the exhibits of Postal Services will be located in a palace near the Prašná Brána (the Powder Gate). In addition to these more or less usual categories, an exhibit will be located in Prague Castle that should be of interest to both art lovers and stamp collectors. This exhibit will concentrate on Czechoslovak stamps with fine art motives along with the original artifact on which the stamps were based. While this part of the Praga activities will run for about two months, it will open along with the rest of Praga 78 on September 8, 1978.

To house the collections at Praga the organizers have ordered 5000 two-sided frames. Allowing for frames that will be flush with the wall or otherwise only useable on one side, probably at least 9000 frames will be available for the show. The organizational format of the show will include all the traditional categories. In addition, however, Praga will also have a special class that will accept exhibits that are too specialized to qualify as a regular exhibit in the National Class, but are part of Czechoslovak philately (perkins, plating studies and so on). Medals will not be awarded this class of collections, but quality and contributions to philatelic knowledge will be recognized by various levels of small rectangular plaques. All exhibits qualifying and accepted for showing in the usually recognized categories will be allotted either 5 or ten frames. It should be noted that a single collector will be able to show more than one exhibit, assuming that each exhibit meets the appropriate standard for an international exhibit. The organizers will bear the full cost of insuring exhibits from the time of receipt in Czechoslovakia until the return of the collection to the owner. This will be a saving to exhibitors of what is always a considerable cost when participating in an international show.

Each day of Praga will be devoted to a special theme, such as aerophilately, youth philately, postal history and so on. During each of these days a symposium will be held on the day's theme, a postal card with an appropriate design will be issued, and a commemorative cancellation will be used. A large catalog with many articles is anticipated. The exhibits will be listed by categories, but interestingly no descriptions are contemplated—only the name of the exhibitor and the title of the exhibit itself. And finally, a series of cultural events, from meetings with stamp designers and artists to visits to cultural institutions, will be available to the visitor.

In spite of the potential size of Praga, I was repeatedly assured that quality of materials will be the deciding factor for acceptance of collections for exhibiting. If enough qualifying collections are not available, and to qualify exhibits will have to meet the usual FIP standards, frames will simply not be filled. However empty frames at Praga seem unlikely, I was told, because preliminary requests for exhibit space are so large it is highly probable that this international show will also be oversubscribed.

It is clear even at this early date that the organizers of Praga 78 are going all out to make their show a philatelic event of note. Not only are their plans impressive, but they have the resources to make them good. I

would think that our members would be well advised to plan to participate in Praga 78 as exhibitors, visitors, or preferably both.

—J. J. Verner

REPORT FROM GREAT BRITAIN:

SCP Miss Yvonne King, Worthing, Sussex, England, reported on the outstanding results of members of The Czechoslovak Philatelic Society of Great Britain in a recent philatelic exhibition held in London, of which SCP Kay Goodman was chairwoman.

Ernst Gorge won the Czechoslovak vase for the best entry of Czechoslovak philatelic material together with a silver medal. His entry consisted of The Masaryk issues 1923-1927 with die proofs, color trials, showing the various types and a special study of water mark positions.

SCP John Whiteside won the British Air Mail Society medal for the best aerophilatelic entry together with a silver medal.

This was a study of the first ten years of Czechoslovak airmails, considering the stamps used, cachets and etiquettes applied to airmail, postmarks used at aerodromes and flown covers showing how air services developed during that period.

Reg Hounsell won three bronze medals for his three separate entries:

- i) A study of the first issue "Hradčany" including Eastern Silesia overprints, varieties, proofs and the 1920 Red Cross Issue.
- ii) The 1920 President Masaryk 2nd allegory issues including trials and proofs. The 1923 Agriculture and Science issue.
- iii) The introduction and expansion of internal and international airmail services of Czechoslovakia 1920-1945 illustrated by flown covers.

M. Mirtl—A bronze medal for a study of the Hradčany issue. Technically speaking Mr. Mirtl is not a member of the Society as yet but has an application form, and is in the process of joining our Society.

Yvonne King won a Silver medal for a study of the Hradčany issue, imperforate.

Congratulations, on behalf of the officers and members of our Society to the aforementioned award recipients. Our sincere appreciation to Miss King for sending us this resume from Great Britain.

WANTED—INFORMATION:

Joseph J. Janecka, SCP honorary member and past president of our Society is searching for any philatelic material issued in the United States relative to Bohemeoslovenica. He is "accumulating" material in order to publish a book about United States-Bohemeoslovenica contributions to our philatelic annuals. Please contact Joe at 7306 Ogden Avenue, Riverside, Ill. 60546.

LIGHTHOUSE MATERIAL:

Some years back through the efforts of our President, Henry Hahn, our Society members were offered the opportunity to purchase Lighthouse material at a savings. Anyone interested may write to Mr. Charles L. Koryda, Jr. McLean Stamp Company, P. O. Box 131, McLean, Va. 22101, who will supply current information.

"EDITOR'S CHATTER":

At the time you will be reading this Specialist, you may be in the midst of preparing for your vacations, while your editor and husband will be attending AMPHILEX-77 in Amsterdam, May 26-June 5th. Both of us are looking forward to meeting members of our Society that live on the continent. I will prepare a review of AMPHILEX-77 in a coming Fall Specialist.

Also this Fall our Specialist will publish a very interesting article that I just received from Mr. Viktor Indra living in Olomouc, Czechoslovakia. It will be necessary for me to translate it and I will do my best, in this my first endeavor, with this phase of philately.

My summer months will be busy—as I am beginning to prepare a series of short articles that will appear in our Specialist monthly. "A Philatelic View of Prague"—combining famous points of interest located in Prague, with a philatelic theme. I hope that it will be of some use to our members planning on attending PRAGA-78. The article will enable you to view the lovely old landmarks in Prague, not as a tourist but as a philatelist.

On behalf of your Society's officers, Board, members, and editor, may you all have an enjoyable summer—accident free—so that we can all meet in Baltimore, at BALPEX-77.

Jane Sterba

NEW MEMBERS

- 1171 Michael Norris, 401 Ruggles St., Prince George, B. C., Canada U2M 3P7
 1172 Bert Schapelhouman, 651 Distel Drive, Los Altos, Calif. 94022
 1173 Miss Michele Patrick, 13049 Stevens Rd., Philadelphia, Pa. 19116—Youth
 1174 Mr. D. Kosacky, 6542 McLynn Ave., Montreal, Quebec, Canada H3X 2R6

RESIGNED

- 741 Richard Horny, 280 Riverside Drive, New York City 10025

CHANGE OF ADDRESS

- 1150 Onnie L. Duvall, 3119 Walnut Ave., Owings Mills, Md. 21117
 1077 Frank J. Klasek, 1021 Asylum Ave., Apt. 323, Hartford, Conn. 06105
 407 Christine S. Blinn, P. O. Box 35, Cape May Point, NJ 08212
 1121 Lawrence A. Spivak, 5558 Castle Glen Dr., San Jose, CA 95129

DECEASED

- 1088 Robert Schefke, 270 Greenwood Rd., Elgin, Ill. 60125

Please mention this publication when answering ads. Thanks!

AUCTION!

6th mail sale and floor auction of the Czechoslovak material to take place at BALPEX — Baltimore, Maryland on Saturday, Sept. 3, 1977.

Approximately 500 lots to suit beginner as well as advanced philatelists will go off at time to be yet announced.

Catalog of lots will be available by end of July—those interested please write to:

VACLAV VANIK

2613 S. Ridgeway Ave., Chicago, Ill. 60623, USA

Our 23rd Year

K-Line's Czechoslovakia Pages

SUPPLEMENT No. 23—1975-76

\$5.25 plus \$1.25 postage

(Fully illustrated and expertly annotated)

OUR MOTTO: "Others can Beat our Price, but not the Quality"

**AS A SPECIAL FEATURE WE PROVIDE A
CZECH NEW ISSUE SERVICE**

As a subscriber to our K-Line's Czecho New Issue Service you will receive next year's supplement at no charge, except for postage. Write for details.

K-LINE PUBLISHING, INC.

P. O. Box 159

Berwyn, Ill. 60402

P.S.—Besides Czecho, we have a line of pages for 15 countries and 11 Topics.

A Philatelic View of Czechoslovakia Boundaries and Their Changes

By Ing. Vladimír Feldmann

(Translated and adapted by L. H. Vydra)

Boundaries with other States

A. With the Western Ukraine

Towards the end of 1918, a so-called West Ukrainian Peoples Republic was established in the Eastern part of Galicia and the Northern part of Bucovina. These regions were inhabited by Ukrainian people. Originally the center of this area was located in the town of Lwov but later the town of Stanislaw became the center of the domain. This state ceased to exist in 1919, when that entire region was divided between Poland and Roumania. During 1919, Czech postal tariff still listed postal rate for letters, packages and other postal material sent to the Western Ukraine. This material enjoyed preferential, reduced rates.

B. With Roumania

Roumania was Czechoslovakia's neighbor only during the pre-World War II years, when Ruthenia was the autonomous province of Czechoslovakia. The Czech-Roumanian boundaries were fixed by the Versailles and other 1918 peace conferences, and in 1921 were further corrected. However these corrections were slight and amounted to mere exchanges of a few villages with small surrounding territories. In 1938, Roumania was the only neighbor of Czechoslovakia which did not present any territorial claims in spite of the fact that a Roumanian minority inhabited some localities of the Czechoslovak side of their common boundaries.

C. With the Soviet Union

The Soviet Union did not become Czechoslovakia's neighbor until during World War II when the Polish-Soviet boundaries were pushed to the West. The Czechoslovak-Soviet boundaries changed as the result of the annexation of former Ruthenia (also called Subcarpathian Russia; in 1938-1939 also called Carpathian Ukraine and during 1944-1945 also known as the Transcarpathian Ukraine) by the Soviet Union.

During a brief period during 1944-1945, the Czechoslovak administration did function in one area of this region. The special Czechoslovak government Delegate in exile, resided in the town of Chust. However the National Council of The Transcarpathian Ukraine was established on November 25, 1944, in the town of Užhorod and voiced their demand for annexation of this region into the Soviet Union. The above mentioned Council annexed the entire region during March of 1945.

These administrative changes were naturally accompanied with some interesting postal and philatelic consequences. In accordance with the decision of the Czechoslovak Government Delegate dated November 11, 1944, an overprint CSP was affixed on all Hungarian stamps which were put into circulation on December 4, 1944. Zumstein stamp catalog lists these stamps under special numbering, following the listing of regular Czechoslovak issued stamps. Also special postmarks were made for all localities under the administration of the Czechoslovak Delegate.

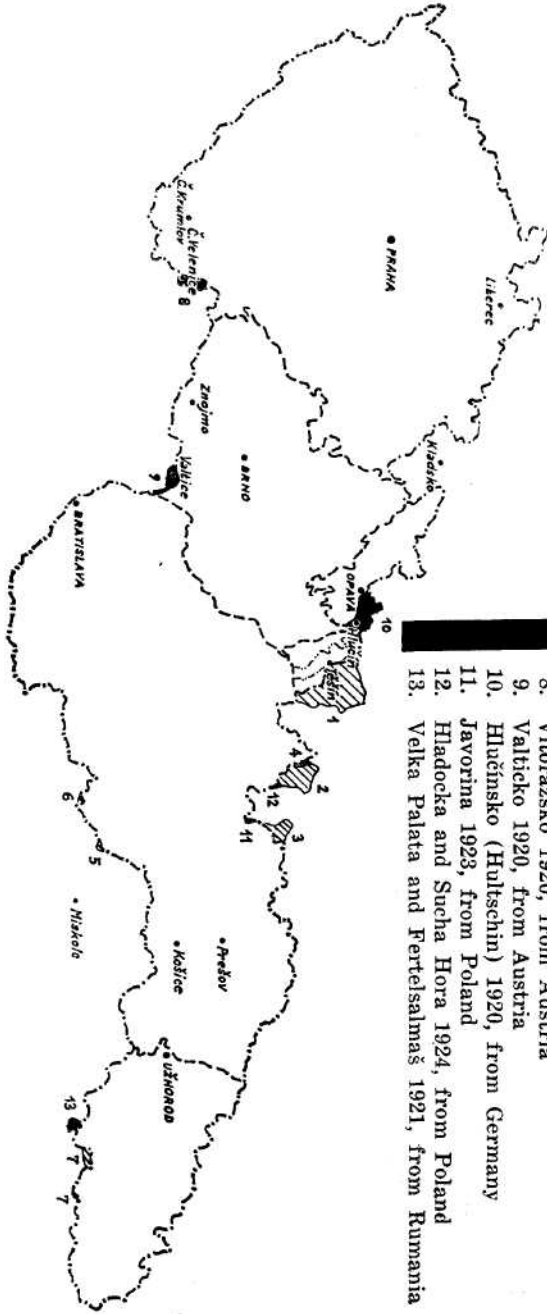
In March, 1945, the first provisional stamps of the National Council for

MAP No. 1

- state boundaries in December 1920
 - - - - - province (land) boundaries
 - - demarcation line Teschen (Těšín) region, November 1918
 - - - - - demarcation line Teschen (Těšín) region, February 1919
- Renounced regions**
1. Tešínsko (Teschen) 1920, to Poland
 2. Oravsko (Orava) 1920, to Poland
 3. Spišsko (Spiš) 1920, to Poland
 4. Lipnica Wielka 1924, to Poland
 5. Šušava (Susa) 1922, to Hungary
 6. Somoška (Somosko) and Somošova (Somoskoufaln) 1924, to Hungary
 7. Valea Seaca and Valea Francise 1921, to Rumania

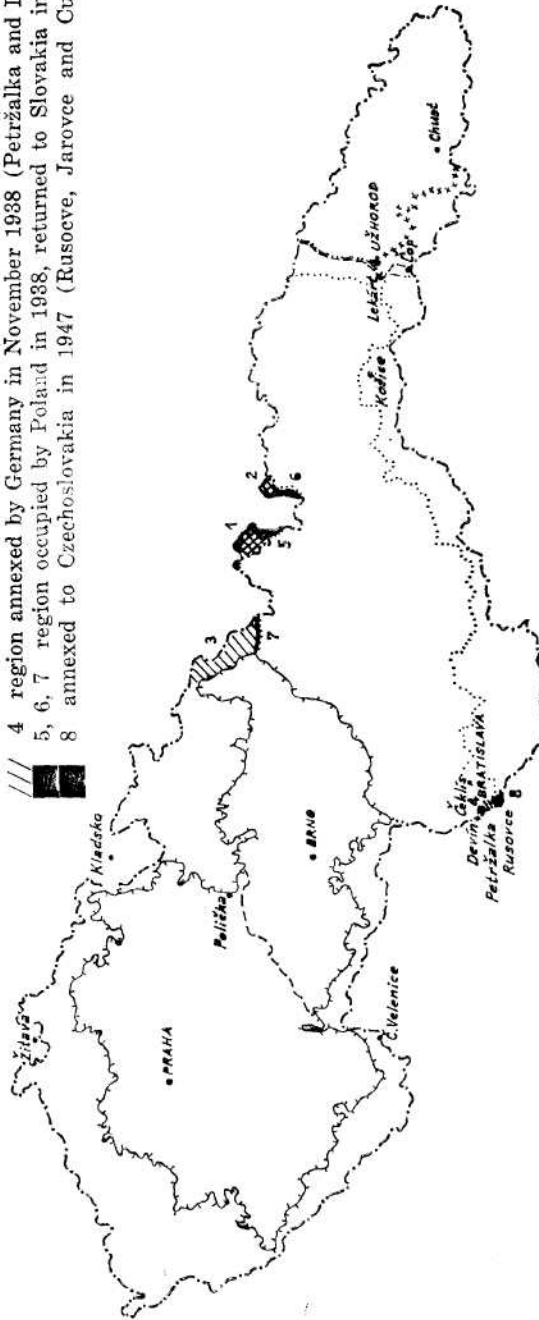
Annexed regions

8. Vitorazsko 1920, from Austria
9. Valtičko 1920, from Austria
10. Hlučínsko (Hultschin) 1920, from Germany
11. Javorina 1923, from Poland
12. Hadočka and Sucha Hora 1924, from Poland
13. Velka Palata and Fertelsalmaš 1921, from Rumania



MAP No. 2

- Czechoslovak state boundary until September 30, 1938
- +--+ Boundary Bohemia-Moravian Protectorate
- Boundary of the Slovak State
- xxxxxxx Boundary of Carpathian Ukraine
- Provincial (Land) boundaries
- Definitive boundary between Czechoslovakia and Soviet Union
- ▣ 1, 2 region assigned to Poland in 1920, annexed to Slovakia after the fall of Poland 1939, returned to Poland after the liberation 1945.
- /// 3 region occupied by Poland 1938/39, annexed to Germany, and returned to Czechoslovakia 1945
- /// 4 region annexed by Germany in November 1938 (Petržalka and Devin)
- 5, 6, 7 region occupied by Poland in 1938, returned to Slovakia in 1939
- 8 annexed to Czechoslovakia in 1947 (Rusoeve, Jarovce and Cunovo)



The Transcarpathian Ukraine were issued. Again current Hungarian stamps were used with an overprint "Posta—Zakarpatska Ukraina" and were printed using the Russian alphabet. A majority of world stamp catalogs list these stamps as tho it were an independent country, altho Scott catalog omits these stamps completely. This Russian overprint was also used on the remainder of Hungarian stamps with the Czech overprint—CSP 1944. Stamp catalogs of the entrie world do not list these stamps with the double overprint, although these stamps were officially used. However these catalogs, again with the exception of Scott's, list the definitive stamps issued by the above mentioned National Council, May 1, 1945. A thorough examination of these postal developments in The Transcarpathian Ukraine region is referred to in an article by Mr. M. Blaha, entitled "Vývoj Poštovníctví z Zakarpatské Oblasti Sovětského Svazu" published in Filatelie Nos. 19, 20 and 21 in 1965, pages 434, 457 and 480. In another article by Mr. M. Blaha "Dva Úřední Přetisky na Území Zakarpatské Ukrajiny, 1944-1945, Two Official Overprints on Transcarpathian Ukraine Territory 1944-1945" appeared in Filatelie Nos. 15, 16 and 17, 1972, and reads as follows:

The agreement on the annexation of The Transcarpathian Ukraine by the Soviet Union was signed between Czechoslovakia and The Soviet Union on June 29, 1945. The new Czech-Soviet boundary did not correspond with the old land boundary between Slovakia and Ruthenia. As an example the vil-lages of Cop and Surty which were part of Slovakia in the past, were annexed by the Soviet Union.

The provisional Czechoslovak National Assembly passed a respective constitutional law about the annexation and respective boundary changes on November 22, 1945. The following January, 1946, the Assembly also ratified the Czechoslovak-Soviet agreement of June 29, 1945. On January 23, 1946, the Presidium of the Supreme Soviet issued a decree establishing the Transcarpathian region of the Ukrainian SSR.

In the meantime, on November 15, 1945, the validity of stamps issued by the National Council of the Transcarpathian Ukraine was cancelled, and these stamps were replaced with Soviet stamps. Likewise Soviet postmarks began to be used and only in some localities for certain periods of time the provisional postmarks continued to be used.

There were still some additional boundary changes when the definitive delimitation was effected. These were small ones however. As an example, the post office in the village of Klenova, which was originally on Slovak soil was annexed during the Hungarian occupation of Ruthenia, to be a part of the autonomous Carpathian region and was temporarily under the jurisdiction of the National Council of the Transcarpathian Ukraine. The village of Lekart (now Lekarovce) was returned to Czechoslovakia during the definite delimitation of Czech-Soviet boundaries.

End of article

PLEASE NOTE

There is a new deadline for copy for the Specialist of the 5th of the month prior to the month as dated on the magazine (i.e. January 5th for the February issue.) As this is the deadline for copy to the printer, material should be in to the editor at least a week before that date. Advertisers should note this new date, as well as contributors to its columns. We hope to get the Specialist in the mails sooner, but whether arrival time will change much will be up to the USPS.



FOR SALE THROUGH THE SPECIALIST

The following books are still available for purchase through the Specialist. Send your check made out to the CZECHOSLOVAK SPECIALIST to Richard Major, P. O. Box 4074, Arlington, Va. 22204. Please add 70c for postage and insurance for the first book and 40c for each additional book

MONOGRAFIE, Vol. 13, Part I. Cancellations to 1918 town A-O with black print (Cernotisk). In Czech, German notes -----	\$14.50
English-Czech/Czech-English Philatelic Vocabulary (paper back) ----	3.25
Same, hard cover -----	4.25
R. Richet, The Issues of Sudetenland. In French -----	5.50
R. Richet, The Issues and Cancellations of Carpatho-Ukraine and Southern Slovakia. In French -----	4.00
Translation of Richet, Carpatho-Ukraine and Slovakia (as above) as published in the Specialist. Unbound -----	4.00
R. Richet, The Issues of the Czechoslovak Legion in Siberia. In French -----	2.00
R. Richet, Czechoslovak Fieldposts. In French -----	5.50
Translation of PADELKY (Forgeries) as published in the Specialist. Unbound -----	4.50
C. Jesina, The Birth of Czechoslovakia. A collection of historical documents and photos from 1915-1918. In English -----	5.00
Catalogue of the Postal Stationery of Czechoslovakia (Higgins and Gage 1974 edition) and Subject Index of the Specialist 1963-1973 ----	3.00
1976 Supplement to POFIS, Catalogue of Czechoslovak Stamps. In Czech -----	1.00
SOCFILEX 1976 Exhibition Catalogue, 109 pages illustrated. In Czech.	2.50
ZNOJMO '76 Exhibition Catalogue, 88 pages illustrated, with postal stationery item and black print from the show. In Czech ----	3.50



WANT TO BUY

MINT **MINT**
CZECHOSLOVAKIA

ISSUES 1923-1926
(Scott Nos. 92-118)

Full Sheets

Part Sheets

Blocks

Die Proofs

Color Trials

Plate Proofs

Rare Perforations

Varieties

Rare Watermark Positions

ARTHUR I. KESSLER

221 East 78th Street

New York, N. Y. 10021
