

THE CZECHOSLOVAK SPECIALIST

Official Monthly Journal of the  Society for Czechoslovak Philately

Silver Bronze Award Praga 1968

Vol. XXXVI

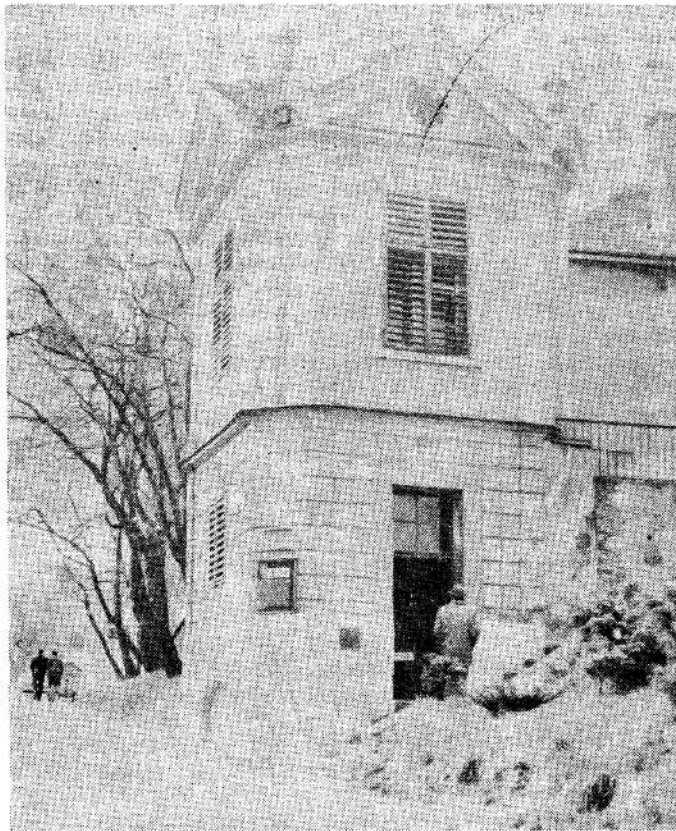
November 1974

No. 9, Whole No. 345

Mini-Museum Of Postal History In Southern Bohemia

By Jaroslav Ježek

Perhaps a few introductory words are necessary. Bohemia and Moravia and provinces corresponding with the "Czecho-" component in Czechoslovakia. The capital of Bohemia (and Czechoslovakia) is Praha (Prague), pop. 1,100,000—a city of more importance in Columbus' time than Vienna or Budapest.



Larger towns of Southern Bohemia are české Budějovice (Budweis), pop.

80,000, Tábor, pop. 28,000—the cradle of Hussite Wars at the beginning of the 15th century, and Pisek, pop. 25,000. It is at Pisek that our museum is located. The setting could not be better. I have thought that Southern Bohemia is the most pleasant nook of the world, thought I have tried to convince myself, that such is a subjective notion, conditioned by my origin and youthful recollections.

Later on, after having read the following passage in the National Geographic Magazine of March 1925, describing a flight from Prague over Southern Bohemia in the direction of Vienna ("Looking down on Europe—The Thrills and Advantages of Sightseeing by Airplane, as Demonstrated on a 6,500 mile Tour over Commercial Aviation Routes", by Lieutenant J. Parker Van Zandt) I have concluded that there is indeed more to it!

" . . . In less than two hours we were there—two golden hours crowded with a kaleidoscope succession of scenes and vistas that not even the master brush of a Corot could rival. If the long flight across Spain to Africa was the most spectacular, surely this all-too-brief trip across Bohemia was the most charming of my aerial travels in Europe.

Overhead, a flawless blue sky, like the image of a serene conscience; below, a marvelous mosaic of cultivated farms in all the ravishing colours of the harvest season. And such an infinite variety of patterns! Dark green and purple forest patches standing groomed and orderly; long, narrow, undulating strips of alternating green and gold and brown—new growth, ripening grain, and fresh, upturned earth; a score of greens; delicate shades of henna and silver-fox; gray and blue flashes of water; the white ribbons of roads lost for a moment in the cool shade of timber; tiny teams of oxen on the crest of a slope—while over all the dominant color theme of gold, the gold of the harvest.

It is little wonder that Bohemian character developed in such a friendly environment."

Now, while writing this, it is again harvest-time, but 50 years since Mr. Parker Van Zandt had written these lines conveying the spirit of my country with a force which even our greatest poets seldom attain. It is not for the first time that these words filled my eyes with tears.

Southern Bohemia is a territory of old postal traditions—and of the most interesting pre-stamp postmaster postmarks with various peculiarities, surviving too on the first Austrian stamp issue of 1850. But the charm of Pisek is based on more than its postal history. It is a pleasant town favored by artists (some, e.g. the great violin pedagogue Ševčík of world renown) and retired people. In this it is similar to the old German town Oybin (in the originally Slavonic province of Lausitz-Lusatia), where lived the pioneer of German philately Dr. Alfred Moschkau. Pisek, too, has a many times larger

THE CZECHOSLOVAK SPECIALIST

Vol. XXXVI

November 1974

No. 9, Whole No. 345

Published monthly except July and August

Second Class Postage Paid at Lawrence, Kansas 66044

Office of Publication, 821 Vermont St., Lawrence, Kansas 66044

\$5.00 per year

Editor: Henry Hahn, 2936 Rosemoor Lane, Fairfax, Va. 22030

Managing Editor: Harlan W. Miller, 821 Vermont St., Lawrence, Kans. 66044

Editorial Board: Charles R. Collins, Richard Gray, Miss Yvonne King,
Wm. V. Schoenig and Tod Stromquist

Postmaster: Send form 3579 to 821 Vermont St., Lawrence, Kans. 66044

share of philatelic life oriented towards postal history, than is proportionate to its population.

And as "everything is connected with everything" as the saying goes, Písek is no exception to this rule—there are relations to American philately.

The ancestors of Mr. George Blizil, Director of International Affairs of the A.P.S. and Director of the Society for Czechoslovak Philately, lived in Mirovice, a few miles to the north of Písek. He remains a staunch friend of Czechoslovak philately and has done more for its propagation in the United States than any other man I know—unless it were our other good friend Dr. Wm. Reiner-Deutsch. His association with Písek is from a quite different aspect. In his article "Postal History of Czechoslovakia," published in "The Czechoslovak Specialist" of November 1961, he presents rare covers with the pre-stamp postmarks pertaining to the history of the 11th Bohemian Infantry Regiment (later named the Imperial Royal Archduke Rainer 11th Line Infantry Regiment), which had one of its recruiting commands—in Písek.

Old-timers of Písek have informed me that many years ago large quantities of such covers were offered at a few cents apiece. For want of interest most of them have been burnt.

But let us return to our museum. The idea of it has been inspired by the great success of the memorable Exhibition of Specialized Branches of Postal History with international participation—Písek 1972, which took place May 20-June 4, 1972.

The catalog of more than 200 pages, entitled "Postal History of Southern Bohemia," brings several good articles with many illustrations, e.g., one by Ing. Emil Votoček "Postmarks of the Frachin district," being an excerpt from his monograph "Czech postmarks from earliest times up to 1918"—a long expected fundamental work, due to appear in 1975. This excerpt, covering 50 pages alone, suffices to show the rich variety of Bohemian postmarks.

One of the industrious students of local postal history, and initiator of all relating events is Mr. Vaclav Konstant in Písek, author of "Three types of the postmark von Prag" (the earliest pre-stamp postmark of Prague, used 1782-1788), published in *Filatelie* 1974-5. In the next issue, No. 1974-6 he brings an article on the "Mini-museum in Písek," from which I quote the following passage:

"We would like to show our readers in what manner it is possible to be of help to collectors in their endeavor to study the postal history and preserve its documents. In Písek we have opened on 20, April 1974 the little museum of postal history and a library.

Our club has acquired and brought into repair a curious small empire building called Kronberger's pavilion. There is situated the club's library and a permanent exposition of documents to the development of the post-office in Písek.

One day a week the pavilion is accessible to the public—for members of the club, any time."

I have been present at the inauguration of this pavilion, probably unique in the world as regards its location in a small town and the efforts of a few people with great philatelic hearts. The library is not much to speak of from the view-point of financially better equipped organizations—I have contributed a few issues of *Postal History Journal*—as I could part with spare copies only, Písek being rather distant from Prague. But let us hope more literature will flow in in due time.

Friends of Postal History are always welcome at Písek and shall find real philately in the hands of warm-hearted people—in a setting of pleasant nature and old cultural tradition.

From the Editor's Stock Book

Our congratulations this month go to one of our new members, Mrs. Lucile Wallace of Phoenix, Arizona on receiving a Gold Medal at BECKPEX for her exhibit entitled "Musical Czechoslovakia." Since then she has added another Gold at ELPEX, and in October entered EXFILMEX '74-UPU (Fifth Inter-American Philatelic Exhibition) in Mexico City. No results as yet—but our expectations for Mrs. Wallace are high at EXFILMEX and we look forward to her participation at future SOCIETY shows.

We are delighted to welcome back to the SOCIETY Mr. Joseph Novy, after a lapse of several years during which he resided in Basel, Switzerland. It is rumored that our BRNO '74 award winner, Otakar Kutvirt (also known as Mr. 25h Ultramarine) is Mrs. Novy's cousin.

Last month we also heard from Alex McMillan of Auckland, New Zealand. He informs us that he first found out of his winning a Bronze at COMPEX through the SPECIALIST. We hope that his award did not crash or drown on its long voyage from Chicago. He further tells us he enjoyed seeing those "happy faces" of COMPEX participants in our June issue and would like to meet us in person. Those of us who have seen his fine exhibit at NAPEX and COMPEX are certainly eager to meet him as well.

At the moment, Wolfgang Fritzsche, our Director, Sales Manager and Postal Stationery Columnist is on one of his jaunts; this time to South America. We wish him and his Mrs. a pleasant trip and safe return.

Lastly, we wish to urge those of you who have not as yet done so to check our membership roster in the September issue and inform our Secretary, Ed Lisy of any errors. Also, remember that "DUES R DUE NOW," and our amateur staff would rather play with stamps than send you reminders next year.

HH

Our 20th Year

K-Line's Czechoslovakia Pages

SUPPLEMENT No. 21-1873

\$2.10 plus 50c postage

(Fully illustrated and expertly annotated)

OUR MOTTO: "Others can Beat our Price, but not the Quality"

**AS A SPECIAL FEATURE WE PROVIDE A
CZECH NEW ISSUE SERVICE**

As a subscriber to our K-Line's Czecho New Issue Service you will receive next year's supplement at no charge, except for postage. Write for details.

K-LINE PUBLISHING, INC.

P. O. Box 159

Berwyn, Ill. 60402

P.S.—Besides Czecho, we have a line of pages for 15 countries and 11 Topics.



(Advertisement)



OF PRAGUE INVITES YOU TO Collect CZECHOSLOVAK STAMPS

And Gives You Ten Fine Reasons Why:

- 1) They'll give you a glimpse into the heart of Europe
- 2) You'll make friends with a people who, in peace, are building a new life for their country
- 3) You'll marvel at the beauty of Czechoslovakia's countryside, extolled by its artists and poets
- 4) You'll become acquainted (or reacquainted) with the old cultural tradition of the Czech and Slovak peoples
- 5) You'll learn of the characteristic fauna and flora of Central Europe
- 6) You'll keep up with the latest in Czechoslovakia's industrial and scientific development, including advanced research
- 7) You'll love their motion—like illustrations of the colorful world of sport
- 8) You'll see why Czechoslovakia has gained international recognition for its advanced techniques of stamp reproduction, harmony of color and outstanding artistry
- 9) They represent the work of their finest artists and engravers
- 10) Czechoslovakia's stamps are neither too large or small—triangular or imperforate—just stamps as stamps should be!

ASK YOUR FAVORITE DEALER!



Charley's Corner

By Charles Chesloe

P. O. Box 237

Willow Springs, Ill. 60480



Fig. 1

The independent State of Slovakia issued 228 major varieties of postage stamps in the 6½ years of its existence. A serious collector of Slovakia can build, however, a several volume collection due to the many varieties that exist.

Figure 1 shows a double perfora-



Fig. 2

tion horizontally in every other horizontal row. The error exists on the 1939 Hlinka overprinted perforated 12½.

Figure 2 shows the 1 Kč value perforated 12½ only with the overprint strongly shifted.



Fig. 3

CHRISTMAS COMING SOON!

Don't forget your philatelic friends in CZECHOSLOVAIA by sending them your gift through us, via TUZEK.

Travel: "GO WITH THE MAN WHO WAS BORN THERE"—we specialize in Czechoslovakia, and 1975 will be a great year for travel.

ALESH TRAVEL AGENCY

ALEŠ EXCHANGE COMPANY

1371 First Ave., New York 21, N. Y.



Fig. 4

Figure 3 shows the 2nd issue of Hlinka in 1939. The copy at the left pictures the dark green copy but the copy at the right is really a color trial in olive. Both have the regular



Fig. 5

perforation—12½.

Figure 4 shows the Štefánik issue of 1939 in imperforate pairs. Most of the issues of Slovakia exist imperforate and were printed for high ranking Slovak and German officials in very limited quantities.

Figure 5 shows the 1940-41 newspaper issues with offsets of the designs. The 5 heller shows the block of 6 with a partial offset running diagonally.

NEW MEMBER

1063 Alexander P. Minarik, 4998 De Maisonneuve West, Apt. 820, Montreal, Canada H3Z 1N2

REINSTATEMENT

91 Joseph Novy, West Cornwall, Conn. 06796

FOR SALE THROUGH THE SPECIALIST

To purchase any of the items listed below, please send check issued to the CZECHOSLOVAK SPECIALIST to the Editor (H. Hahn, 2936 Rosemoor Lane, Fairfax, Va. 22030). Please add 50c postage and insurance for the first book and 30c for each additional book ordered.

- 1) Specialized Handbook of Czechoslovak Stamps, by L. Novotny, WITHOUT black trial printing (ČERNOTISK) \$9.50
- 2) Bohemia-Moravia Handbook (CPS Publication) 2.75
- 3) English-Czech/Czech-English Vocabulary, soft bound 2.25
- 4) As above, hard bound 3.25
- 5) R. Richet: The Issues of Sedetenland (in French), profusely illus. ... 5.50
- 6) J. Kostelka: "Bohemoslovenika" 1.00
- 7) Translation of "Padelky" as published in the SPECIALIST, 18 issues, unbound 4.50

In addition, we are pleased to add another service, whereby members may both SAVE and SUPPORT OUR SOCIETY. You may now purchase ALL PHILATELIC SUPPLIES, including albums, supplements, mounts—all major brands—at 15% off list price, post paid on orders over \$10. Send no money, you will be billed with your shipment.

DR. LADISLAV V. FISCHMEISTER, M.D.
V A Hospital, Augusta, GA 30904

FIFTH MAIL SALE

Sale ends DECEMBER 15th

All stamps mint, unless otherwise stated

The prices below represent MINIMUM bids (AUSRUPPREIS)

1	HRADCANY, 10 hal, LUXUS, 43a, M25 (Scott \$17.50) -----	\$7.00
2	— 20 hal, LUXUS, 45a, M 27 (Scott \$65.00) -----	26.00
3	same, ESSAYE, brown-violet, VF, R -----	9.00
4	same, ESSAYE, dark violet, VF, R -----	9.00
5	same, ESSAYE, blue-green, VF, R -----	9.00
6	same, ESSAYE, brown, VF, R -----	9.00
7	same, ESSAYE, green-black, VF, R -----	9.00
8	same, ESSAYE, red-brown, VF, R -----	9.00
9	— 30 hal, violet, LUXUS, 47a, M 29a -----	28.00
10	— 75 hal, ESSAYE, red, VF, R, 33 var., M 31 var. -----	9.00
11	— same, ESSAYE, violet, VF, R -----	9.00
12	— 300 hal, ESSAYE, yellow-green, 38 var, M 22 var -----	9.00
13	same, ESSAYE, dark violet, VF, R -----	9.00
14	— same, ESSAYE, black-green, VF, R -----	9.00
15	— same, ESSAYE, brown-violet, VF, R -----	9.00
16	— same, ESSAYE, violet, THICK PAPER, R -----	10.00
17	— VOREC, 4 impr. val.: 15, 30, 50, 100, VF -----	8.00
18	— same, 60 hal, 32, M 20 var. INVERTED OVERPR., RR, VF ----	15.00
19	— same, 75 hal, 33, M 31 var. INVERTED OVERPR. RR, VF ----	15.00
20	— same, 80 hal, 34, M 21 var. INVERTED OVERPR. RR, VF ----	15.00
21	— same, perf. 13¾, 3-500 hal, 14 val., F-VF -----	40.00
22	— same, perf. 11½, 5-400 hal, 7 val, VF -----	25.00
23	PC 1919, AIR, B 37-39, M 71-73, VF, sign. (Scott 600.00) -----	300.00
24	— Porto, 4 hal, B 41, M 75, VF, sign. -----	5.50
25	— same, 6 hal, B 42, M 76, VF sign. -----	3.00
26	— same, 14 hal, B 43, M 77, VF, sign. -----	13.00
27	— same, 30 hal, B 45, M 79, 1 perf pulld, otherw. VF, sign. (Sc \$175) -----	75.00
28	— same, 50 hal, B 46, M 80, Type II, VF, sign. Scott 340.00 -----	225.00
29	— same, 5 K, B 56, M 90, VF, sign -----	11.00
30	— same, 1 hal, B 58, M 92, VF, sign -----	6.50
31	— same, 15-2, B 59, M 93 (Sc 65.00) VF, sign -----	30.00
31	— same, 10-24, B 60, M94 (Sc. 65.00) VF, sign -----	25.00
32	— same, 20-54, B 62, M 96 (Sc. 65.00) VF, signed -----	25.00
33	— 15 fil, WHITE NUM. B 72, M119 (Sc. 85.00), VF, signed -----	35.00
34	— 3 K, B 88, M 135, VF, signed -----	11.00
35	— 5 K, B 89, M 136, VF (Sc. 60.00) signed -----	30.00
36	— 10 K, B 90, M 137, VF (Sc. 425.00) signed -----	250.00
37	Masaryk 125 hal, ULTRAMARINE, VF, 61a, M 161b -----	12.00
38	TETE-BECHE, complete 12 pairs, VF -----	80.00
39	HOLUBICE, 20 hal, pf 13¾, corur copy with coupn, F, 84b, M 167 B -----	7.00
40	ALLEGORY OSV., 30 hal, IMPF, 70a, M172 imp. VF -----	2.00
41	— 40 hal, IMP., rand block of four, VF, 71c, M 173 imp. -----	6.00
42	ALLEGORY OSV., 100 hal, Perf 11½, FALSUM, blk 4, RR, VF -----	80.00
	(88, M 177 var) -----	80.00

43	-- 100 hal, PERF 13¾, VF, 88a, M 177b -----	10.00
44	-- 185 hal, IMP. 90a, M 179 imp., VF -----	3.00
45	HUSITA, 80, 90 hal IMP., 74, 5, a, M 181-2 U, VF -----	4.00
46	AGRICULTURE ALL., ESSAYE, black on art paper, compl. (6) VF, 76-81, M 183-8 -----	17.00
47	-- ESSAYE, 600 hal on yellow paper, perf. 13¾ R, VF, 81, M 188 var	8.00
48	-- 200 hal, TYPE II, 13¾:13½, 93a, M 203 A II, VF -----	4.50
49	-- same, TYPE II, 13¾, 93, M 203 B, VF -----	3.00
50	-- same, TYPE III, 13¾:13½, RR, VF, 93c, M 203 A (Sc. 60.00) ---	31.00
51	-- 300 hal, TYPE II, 13¾, RR, VF, 94a, M 204 B (Sc. 55.00) -----	25.00
52	CONGRESS, compl., B 137-9, M 209-11, VF -----	27.00
53	SLET SOKOL, compl. B 140-3, M 212-15, VF -----	25.00
54	-- same, USED on paper cuts, VF -----	25.00
55	MASARYK 1930, compl. UPPER coupons, 175-8, M 299-302, VF ----	7.00
56	-- same, LOWER coupon, VF -----	7.00
57	ORLIK, 4 Kc, WITH UPPER coupon, USED, VF, 185, M 312 var. -	13.00
58	-- same, WITH LOWER coupon, used, VF -----	13.00
59	NITRA, 50h, GUTTER, VF, 192a, M 319SZ (Sc. 175.00) -----	65.00
60	1934, 50-3 Kc, compl with PLATE NO 1, 1 A (2 sets), VF 195-8, M 322-5 -----	6.00
61	DVORAK, 2 blk of 4, 1 & 1A, without gum stripes, R, 199, M 329, VF	7.00
62	KDM SHEETS, 1, 2 Kc, VF, sign, 200-1a, M 330-1x (Sc. 385.00)	200.00
63	-- 1, 2 Kc USED on piece, VF, with part of salvage -----	16.00
64	212, 215-7, M 347-50, compl. block of 4, WITH PLATE NOS 1 & 1A (8 bl.) VF -----	4.00
65	1936, Views, 1, 20-10Kc, compl., PLATES 1 & 1A, singles, 218-26, M 351-59, VF -----	6.00
66	-- same, BLOCKS OF 4, with 2 coup., Plates: 4 Kc (1), 5K (1 & 1A), 10 kc (1A), VF -----	7.00
67	DOHODA, corner gutter, 230-1, M 375-6, SZ, VF -----	2.50
68	STEFANIK 60 hal, BLUE, block of four, 255, M 23 (Slov.) VF ----	13.00
69	1943, London sheet, VF -----	8.00
70	PORTO, 1919, ESSAYE, 5, 10, 20, 40, black on thick art paper, VF	8.00
71	-- VZOREC, impf. 11 val, VF -----	22.00
72	-- same, perf. 13¾, 6 val., VF -----	18.00
73	SPEC. DEL., 2, 5 hal. WHITE PAPER, sign. E 1, 2a, M 11, 2 y, VF	4.00
74	-- 10 hal, WHITE PAPER, VF, signed, E 3a, M 195y -----	30.00
75	AIR, C1-3a, M 192-4 Avar. INVERTED OVERFRINT, R, VF, Cmpl	70.00
76	-- ESSAYE, 28-500, blue, VF, signed -----	6.00
77	-- ESSAYE, 28-500, green, VF, signed -----	6.00
78	C4-6, M 192-4, perf. compl. signed -----	28.00
79	1946-1968, compl. airs, VF -----	14.00
80	BOHEMIA & MORAVIA, complete country, VF -----	18.00
81	-- 10 K with upper coupon, 19, M 1 (9) VF -----	15.00
82	-- PORTO, compl. GUTTER PAIRS, J 1-14, M 1-14 Z, VF -----	15.00

END OF SALE

Please bid early. Lots are guaranteed genuine and as described provided returns are made within 7 days (Europe 14 days). KEIN AUFGELD. Der US \$ kostet jetzt nur 2.40 DM. M-Michel Katalogue. Postage and insurance extra.

DR. LADISLAV FISCHMEISTER, M.D.

Member APS, Society for Czechoslovak Philately, Bundesarbeitsgemeinschaft Tschechoslowakei und Oberschlesien

Postal Stationery Column

By Wolfgang Fritzsche

Additions to the new Higgins and Gage catalogue:

Postal Cards

- 1974 Same as card 174 but thick address line shortened, now with 5 dots in front and PSC below the dots, also different legend in lower left (use of what we call IP numbers). Fig. 39.
 #177 30h brown on cream, c
 1974 Same as card 176, for use with PSC numbers like Nr. 177 stamp. Fig. 40
 #178 30h brown on cream, c

Postal Collections — S

- 1971 Similar to Fig. S-12, but PostA instead of PostE, for use in Slovakia
 #26 60h purple (IV 1971)
 1974 Same as Nr. 26, but 5 squares in front of address line (for ZIP number)
 #27 60h purple, (III-1973)

A brand new section to start:

Airmail —F— (Envelopes B)

- 1974 Stamp design: jet plane and small old plane surrounded by blue white and red border giving appearance of an airmail envelope. In lower left cachet, stylized aircraft in diff. colors and with inscriptions in diff. languages. Issued for Brno Natl. Stamp Exhibition. Fig. FG-1, red, blue, yellow.
 #1 6 Kcs multicolored, Czech, green cachet, plane: OKBAK
 a) same, Czech, purple cachet, plane: L-BALE
 b) same, Czech, orange red cachet, plane: L-BACB
 c) same, Slov., red cachet, plane: OKBAL
 d) same, Slov., brown cachet, plane: OK-AFA
 e) same, Slov., blue cachet, plane: L-BAAA

Envelopes —B—

- 1973 Issued for the 15th anniversary of the publication "Questions of Peace and Socialism," stamp red and white globe. Blue and red cachet in lower left. Fig. B 23
 #29 3.60 Kcs, red and gold, n
 1973 Issued for international stamp exhibition CSSR-SSSR in Kromeriz, stamp shows Kromeriz buildings, red and gold cachet in lower left. Fig. B 24
 #30 3.60 Kcs, red, gold, blue, green, n
 1974 Issued for PRAHA 1974, jubilee exhibition, 55 yrs. Czech stamps. Stamp shows St. Veit's cathedral in triangle and a dove. Red and blue cachet in lower left. Fig. B 25
 #31 3.60 Kcs, blue and gold, n
 P.S. Envelopes #28-31 sold at 4.10 Kcs, all have side flaps.

SELL - SWAP - WANT

Every member is entitled to one free 15 word ad each year. Word count does not include name and address. Send ad to Wm. Schoenig, 20 Charles Ct., East Patchogue, NY 11772.

BUY—Proprevratore Razitke, by J. Vacck. T. M. Austin, Apartado 10007. San Jose, Costa Rica.

Library Corner

By Jay T. Carrigan, Librarian SCP
12448 Over Ridge Road, Potomac, MD 20854

I would like to pose the following question for our membership: Do you feel that the SCP Library should include material which is not directly related to Czechoslovak philately?

If you have any opinions on this matter, please let me hear from you. I will use your response to formulate a recommendation to the board of directors. If you wish, you may comment on specific types of literature, i.e.:

1. General (e.g., standard catalogs); 2. Austria; 3. Hungary; 4. Germany;
5. Poland; 6. other (specify); 7. Non philatelic (e.g., dictionaries, books on history).

We would like to thank Mr. Joseph Stein for a recent donation of several books and magazines. Joe has also donated his entire file of correspondence relating to the Society's 1970 convention at SEPAD, which he chaired. This item won't be listed in the library catalog, but it should prove useful to anyone faced with a similar chore in the future.

The library has made several recent acquisitions of new material, including some replacements for material in poor condition. In addition to Mr. Stein's donations, purchases were made in the auction of John Velek's estate as well as some recent publications directly from Czechoslovakia. The library has also received donations from Mr. Lester Behnke, the Perfin Club and author Roger Richet, who donated copies of his works. All of the new acquisitions in the "Catalogs and Handbooks" category are listed below.

In addition, the library has acquired through purchase and donation sixty (60) bound volumes of periodicals from the estate of Mr. Frank Kovarik. All available periodicals will be listed in a future issue. However, if you have any specific needs, request the items in the usual manner and we will send what is available. We have a good representation of bound Czech language periodicals from 1918 through 1972, and we are nearly complete from 1928 through 1971. We also have many of the earlier volumes of "The Czechoslovak Specialist."

We continue our listing of library material:

23. Novotný; Katalogy Poštových Známk: Slovensko, Nové Československo (1946, 112p, Slovak)
24. Novotný; Speciální Katalog (3 sections), (1949, 432pp, Czech)
25. Peller, Dr. J.; Studie Razitek Rakousko-Uherských v. Československé Republice (1933, 32pp, Czech)
26. Pofis; Katalog Československých Známeč (1959, 329pp, Czech)
27. Pofis; Katalog Známeč Československo (1961, 322pp, Czech)
28. Pofis; Katalog Známeč (1966, 440pp, Czech)
29. Stach, Alfons (Asta Katalog); Katalog Československých Známeč (1933 62pp, Czech)
30. Stach, Alfons; Katalog Československých Známeč (1939, 64pp, Czech)
31. Stach, Alfons; Specialized Catalogue of the Stamps of Czechoslovakia, (1941, 70pp, English)
32. Vacek, J.; Popřevatová Razítka bývalého Československa. (1940, 268pp, Czech)
33. Weiss, Jan.; Československé dopisnice, (1931, 72pp, Czech)
34. Katalog Sběratelů Československých, (1939, 164pp, Czech)
35. Tribuna Filatelistů Sběratelsky Katalog Známeč, (1939, 104pp, Czech)
36. Tribuna Filatelistů Sběratelsky Katalog Známeč, (1940, 108pp, Czech)
37. Třicet Let Československé Poštovní Známký 1918-1948, (1948, 120pp, Czech)

38. Úvod do filatelie, (1957, 126pp, Czech)
39. Czechoslovak Philatelic Society; Bohemia-Moravia, Slovakia—A Philatelic Handbook, (1958, 103pp, English)
40. Kolár, Hugo; Katalog Známk, 1: ČSR 1918-1947; II edition (Slovak)
41. Kolár, Hugo; Katalog Známk, 2: Rakúsko 1850-1918; II edition (Slovak)
42. Kolár, Hugo; Katalog Známk, 3: Rakúsko 1918-1948; II edition (Slovak)
43. Kolár, Hugo; Katalog Známk, 4: Bosna; Rakúsko-mad'arské poľ'né pošty a Rakúska pošta u zahreňiči (Levente), (Slovak)
44. Kolár, Hugo; Katalog Známk, 5: Madarsko 1868-1946, (Slovak)
45. Kolár, Hugo; Katalog Známk, 6: Slovensko, Čechy a Morava 1939-1945, (Slovak)
46. Kolár, Hugo; Katalog Známk, 7: Nemecko 1871-1938. (Slovak)
47. Kolár, Hugo; Katalog Známk, 8: Jugoslaviya 1918-1947, (Slovak)
48. Kolár, Hugo; Katalog Známk, 9: Srbsko, Čierna Hora, Chorvátsko, (Slovak)
49. Kolár, Hugo; Katalog Známk, 10: Nemecko 1938-1945 (Vel'konemecká ríša), (Slovak)
50. Kolár, Hugo; Katalog Známk, 11: Poľ'sko 1860-1948, (Slovak)
51. Kolár, Hugo; Katalog Známk, 12: Rusko 1857-1923, (Slovak)
52. Exhibition Catalog, Praga 1938, Mezinárodní Výstava Poštovních Známk (76pp, multilingual)
53. Exhibition Catalog, Praga 1955, Mezinárodní Výstava Poštovních Známk (238pp, multilingual)
54. Exhibition Catalog, Praga 1955, Bulletin No. 1, (36pp, multilingual)
55. Exhibition Catalog, Praga 1955, Bulletin No. 2, (32pp, multilingual)
56. Exhibition Catalog, Brno 1958, Celostátní Výstava Poštovních Známk, (196pp, Czech)
57. Exhibition Catalog, Brno 1958, Bulletin No. 2, (28pp, Czech)
58. Exhibition Catalog, Bratislava 1960, Celostátná Výstava Poštových Známk, (210pp, multilingual)
59. Exhibition Catalog, Bratislava 1960, Bulletin, (32pp, Slovak)
60. Exhibition Catalog, Praga 1962, Katalog, (168pp, multilingual)
61. Exhibition Catalog, Praga 1962, Description of Exhibits, (190pp, Engl.)
62. Exhibition Catalog, Praga 1962, Bulletin No. 1, (24pp, English)
63. Exhibition Catalog, Praga 1962, Bulletin No. 2, (24pp, English)
64. Exhibition Catalog, Brno 1966, Celostátní Výstavy Poštovních Známk, (136pp, Czech)
65. Exhibition Catalog, Praga 1968, Katalog, (425pp, multilingual)
66. Exhibition Catalog, Praga 1968, Bulletin No. 2, (41pp, multilingual)
67. Exhibition Catalog, Praga 1968, Bulletin No. 3, (42pp, multilingual)
68. Artia; Wholesale Price List; Postage Stamps of Post-War Czechoslovakia, (1955, 56pp, English)
69. Czechoslovak Philatelic Society: English-Czech and Czech-English Vocabulary, (1953, 92pp)
70. Czechoslovak Philatelic Society; English-Czech and Czech-English Vocabulary, (1955, 96pp)
71. Constitution of the Czechoslovak Philatelic Society, (1964 Rev., 5pp, English)
72. Privately Bound Volume: contents: Filatelistická Revue, Vol. VIII, 10-11, (1937, 52pp, Czech), Series of articles by J. W. Lowey, reprinted from The American Philatelist circa 1936-1944.
73. Postal History Journal, 1961-1963 issues, whole nos. 6-11, bound (Engl.)
- *74. Notebook; Austrian and Hungarian Postmarks used on Czechoslovak Stamps, (English)

Czechoslovak Commemorative Postmarks

Translated by Dr. Otakar Kutvirt with the collaboration of Wolfgang Fritzsche
(Conclusion)

1938

- ÚSTĚK—AUSCHA—I. cerostátní výstava chovatelů dom. zviřectva 29.-31.I.
(also in German)
I. Allstate congress of breeders of domestic animals (green)
- JILEMNICE—Lyžařská mistrovství Československa 1938, 31.I.-6.II.
Ski championship of Czechoslovakia (blue)
- ŠTRBSKÉ PLESO—Sletové zimné hry. a,b 1.-14.II.
Sokol winter games (blue)
- TATRANSKÁ POLIANKA—same (blue) a,b
- STARÝ SMOKOVEC—same (blue) a,b
- NOVÝ SMOKOVEC—same (blue) a,b
- TATRANSKA LOMNICA—same (blue) a,b
- PÍSEK 1—V½stava Masarykova a Benešova, 6.-27.II.
Masaryk and Benes exhibit (blue)
- PRAHA 1—Mistrovství světa a Evropy v ledním hokeji, 11.-20.II
World and European Ice Hockey championship (blue and red) also
in French
- KRUPINA—Výstava diela a pamiatok na T. G. Masaryka. T.G.M. 6-13.III
Exhibit of Masaryk's works and souvenirs (blue)
- PRAHA 1—Sletova informační služba, 1.III.-15.VII.
Sokol information service (black) a,b
- OLOMOUC 1—Oslavy 20. výročí bitvy u Bachmače, 12-13.III
20th anniversary of the battle of Bachmach (blue and red)
- PRAHA 10 HRAD—Oslavy založení čs. armády v Itálii. 19-24.IV.
Anniversary of the forming of the Czech army in Italy (blue)
One cancel without letter, one with "b"
- BRATISLAVA 1—20. výročie založenia p. pl. 30 "V.g.G." 21-24.IV.
20th anniversary of the founding of infantry regiment 39 V.g.G.
(blue and red)
- KOŠICE 1—P. pl. 52 "Gardský" oslavy 20. v½ročia založenia. 21.-24.IV.
20th anniversary of the founding of infantry regiment 52 "Gardsky"
(blue and red)
- STARÁ BOLESLAV—1688 Jubileum Paladia 1938. 1.V.
Paladium anniversary (1.V. violet; 2.V.-11.IX) blue
- BANSKÁ ŠTIAVNICA—Odhalenie pomníka Andreje Kmeta, 10.-30.VI.
Unveiling of the Andrew Kmet statue (black)
- KOŠICE 1—XI. konferencia 66. distr. "Rotary International" 13.-15.V.
XI. conference of the 66th district Rotary international (blue)
- OPAVA 1—TROPFAU 1—Výstava díla Masarykova a Benešova. 15-29.V.
Exhibit of works of Masaryk and Benes (blue) also German
- TÁBOR 1—Návštěva presidenta republiky Dr. Ed. Beneše. 21.-22.V.
Visit by the president of the republic Dr. E. Benes (blue)
- ČÁSLAV—1918—P. pl. 21. Maršála Focha 1938. 21.-29.V.
Infantry regiment 21 Marshal Foch 1918-38 (blue and red)
- UHERSKÝ BROD—Slet sokolská župy Komenského. 22.V.-5.VI.
Sokol congress of the Comenius district (green)
- BRNO 2—Vojáci dětem—28.-29.V.
Soldiers to children (blue)
- PRAHA—X. slet všesokolský—28.29.V, 16.,18.,19.,VI., 25.VI.-7.VII. a,b,c,d,e,f,
g,h,i,j,k,l,m,n,o. — X. Sokol congress (blue)

- PRAHA 1—1878—60 let čsl. sociální demokracie 1938. 1.10.VI.
60 years Czechoslovak social-democratic party (blue)
- BRNO 2—Všecyklistické hry Čs. Ú.J.N. 4.-6.VI.
Bicycle competition of Czechoslovak U.J.N. (blue)
- KROUNA—Mimrův dům—Památce biskupa Brunycha. 4.-7.VI.
Mimra house, commemorating bishop Brynych (blue)
- PODĚBRADY—30 let lázní Poděbrad. 5.-12.VI.
30 years of Podebrady Spa. (blue)
- PLZEŇ—VI. jubilejní výstava 1938. 25.VI.-11.IX., a, b
VI. anniversary exhibition 1938 (blue)
- PRAHA 1—XIII. kongres mezinárodní filat. federace FIP. 27.VI.
XIII. congress of the international philatelic federation FIP (blue)
- PRAHA 1—I. mezinárodní den filatelistů. 28.VI.
I. international philatelists day (blue)
- PRAHA 1—VII. kongres mezinárodní federace filat. tisku FIPP. 28.VI.
VII. congress of the international federation of philatelic press FIPP (blue)
- PRAHA 1—III. celostátní sjezd čs. filatelistů. 29.VI.
III. allstate congress of Czechoslovakia's philatelists (blue)
- TRHOVÉ SVINY—500 let městem. 1.-31.VII
500 years a city (blue)
- PRAHA 36—Sokolské večery slovanské na Žizkov. 2.-4.VII
Slavic Sokol evenings in Žizkov (blue)
- LUHAČOVICE—Celostátní sjezd čs. studentstva 1938. 8.-12.VII
Allstate congress of Czech students (green)
- TURČIANSKÝ SVATÝ MARTIN—Slovenská národopisná výstava 1918-1938
10.VII.-31.VIII.
Slovak folklore exhibit 1918-1938 (red and blue)
- DETVA—Národopisné slávnosti 300 ročnej Detvy 1638-1938. 16-18.VII.
Folklore celebration of 300 years of Detva (green)
- KOŠICE 1—Výstava Východu ČSR 1918-1938. 16.VII.-31.VIII., a, b, c, d
Eastern Czechoslovakia exhibition 1918-38 (blue)
- PÍSEK 1—20 let p. pl. 11. "Františka Palackého" 17.VII.
20 years infantry regiment 11, "Frantisek Palacky" (violet)
- MNICHOVO HRADIŠTĚ—Odhalení pomníku Václava Budovce z Budova. 17.VII
Unveiling of the Vaclav Budovec statue (green)

New Issues

The last stamp issued in January (23rd) is dedicated to the 25th anniversary of the foundation of the Council of Mutual Economic Assistance. This stamp, with a face value of 1 Kčs, was designed by painter and graphic artist Ivan Strnad. The stamp pictures the Council building in Moscow, and the groundplan of the congress hall in this building.

The 60h value presents a picture by the Czech painter and graphic artist Josef Brož, the 1Kčs value present a work by the Slovak artist Orest Dubay, the 1.60 Kčs by Adolf Zábranský, and the 1.80Kčs by František Gross. J. Herčík engraved the 60h and 1.60 Kčs values, M. Ondráček the 1 Kcs value, and Jan Mráček the high value. This lovely set was printed at the Post Printing Office in Prague by rotary recess print combined with three-color photogravure in sheets of 25.

March 21st marked the issue date of yet another commemorative set entitled "Partisan Commanders and Fighters," comprising 6 stamps, shown, designed by Lumir Sindelař and printed by rotary recess print combined with two color photogravure in sheets of 50.



September 25, 1974

2 and 2.40 Kčs BRATISLAVA TAPESTRIES. Engr. by Miloš Ondráček and printed by five-color flat recess print.



September 1974 (date of issue not reported)

30h, 60h and 1 Kčs TARGETS, Graphic design and engraving by Bedřich Housa. Printed by rotary recess print combined with three-color photogravure.

1.60, 2.40 and 3.00 Kčs TARGETS, also by Housa, but printed by multi-color flat recess print.



WANT TO BUY

MINT **MINT**
CZECHOSLOVAKIA

ISSUES 1923-1926
(Scott Nos. 92-118)

Full Sheets

Part Sheets

Blocks

Die Proofs

Color Trials

Plate Proofs

Rare Perforations

Varieties

Rare Watermark Positions

ARTHUR I. KESSLER

221 East 78th Street

New York, N. Y. 10021
