

# THE CZECHOSLOVAK SPECIALIST

Official Monthly Journal of the  Society for Czechoslovak Philately

Silver Bronze Award Praga 1968

Vol. XXXVI

January 1974

No. 1, Whole No. 337

## First Meeting of New Society Directors Held In December



Eight of the ten recently elected Directors of the SOCIETY met at the home of Mirko L. Vondra in Westfield, New Jersey to tackle a mountain of both old and new business. Those in attendance included:

Charles Chesloe of Willow Springs, Ill.; Henry Hahn of Fairfax, Va.; Joseph J. Janecka of Riverside, Ill.; Edward Lisy of Rutherford, N. J.; Thomas Meeks of New York, N. Y.; Joseph Stein of Brooklyn, N. Y.; Jane Sterba of Berwyn, Ill.; Mirko L. Vondra of Westfield, N. J.

Directors George Blizil of Hollywood, Fla., and Wolfgang Fritzsche of Canandaigua, N. Y. were unable to attend.

Following reports by outgoing officers, the first order of new business

included election and appointment of officers in accordance with the SOCIETY'S new Bylaws. These are:

President: Mirko L. Vondra, Vice President: Charles Chesloe, Secretary: Edward Lisy, Treasurer: Thomas Meeks, Editor: Henry Hahn, Librarian: Jay Carrigan, Circuit Manager: Wolfgang Fritzsche.

The Directors have taken steps to broaden and improve the SOCIETY'S activities. The following is a brief summary of action taken in the course of the five-hour meeting:

1. Expand the SPECIALIST from 16 to 20 or more pages by 1975, as proposed by the Editor. Added material will be in form of serialized philatelic literature placed in the centerfold for easy removal. It is anticipated that the first such item will be the Czechoslovak section of the revised Higgins and Gage Postal Stationery catalogue which is scheduled to be published shortly.

2. The SPECIALIST is to include a Czech language column or feature, so as to better serve our Czech-speaking members.

3. Explore republication of the English translation of the book "Padelky" with illustrations. This project will be directed by Mrs. Jane Sterba.

4. Explore the feasibility of publishing an English translation of Mr. Roger Richet's book "Emissions of Sudetenland." This project will be coordinated by the Editor of the SPECIALIST.

5. Provide further improvement in the SOCIETY'S library service as proposed by librarian Jay Carrigan. The binding of periodicals on a selective basis and purchase of new publications were approved. The Board decided against transfer of the library to the APRL (American Philatelic Research Library, State College, Pa.) for the time being.

6. Mr. Harlan W. Miller was elected to Honorary Membership for his outstanding service to philately and to the CZECHOSLOVAK SPECIALIST in particular.

7. Expertization Committee Rules were accepted with minor additions as presented by the Expertization Committee.

8. Charles Chesloe was delegated to explore the possibility of holding the SOCIETY'S 1974 Biannual Convention and Exhibition in conjunction with either COMPEX or BALPEX, with COMPEX given preference. Final decision by the Board will be reached by the end of December '73 and will be published in the February '74 issue of the SPECIALIST.

9. The President has made the following additional appointments:

Publicity Committee: Joseph Stein (Chairman) and Tod Stromquist

Youth Guidance Committee: Henry Samek (Chairman)

Expertization Committee: Ladislav Fischmeister (Chairman), Chesloe, Hahn, Stein, and Verner

Convention and Exhibition Committee: Charles Chesloe (Chairman), M. F. ^

### THE CZECHOSLOVAK SPECIALIST

Vol. XXXVI

January 1974

No. 1, Whole No. 337

Published monthly except July and August

Second Class Postage Paid at Lawrence, Kansas 66044

Office of Publication, 821 Vermont St., Lawrence, Kansas 66044

\$5.00 per year

Editor: Henry Hahn, 2936 Rosemoor Lane, Fairfax, Va. 22030

Managing Editor: Harlan W. Miller, 821 Vermont St., Lawrence, Kans. 66044

Editorial Board: Charles R. Collins, Richard Gray, Miss Yvonne King,

Wm. V. Schoenig, Mrs. Henry Stollnitz and Tod Stromquist

Postmaster: Send form 3579 to 821 Vermont St., Lawrence, Kans. 66044

**Klozar (Vice-Chairman)**

Auditing Committee: Joseph J. Janecka, Peter Krejci

10. The Editor has made the following appointments:

Managing Editor: Harlan W. Miller

Editorial Board: Richard Gray, Charles Collins, Wm. Schoenig, Tod Stromquist, Miss Yvonne King and Mrs. Henry Stollnitz

11. To cover expanded services and offset increased costs, the Board has voted to revise membership dues, effective in 1975. The Regular Membership rate will be \$7.50 and a new Family Membership rate will be \$10 per year. Youth and Patron Membership dues will remain unchanged.

### From the Editor's Stock Book

A HAPPY, HEALTHY AND PROSPEROUS NEW YEAR TO ALL! Society-wise speaking, I can only hope that '74 will be as good to us as was '73; for that was the year in which our elected representatives from New York, Chicago and Washington gathered around a table and made more progress than was made in nearly ten years. I'm of course referring to the December meeting of the new Directors. While there was much debate (some even in the high decibel range)—it could be a memorable meeting, signaling the beginning of a period of expansion and growth of our SOCIETY.

Never missing a good bet, our friends of the First Czechoslovak Philatelic Club of America have just issued another postage meter, this time honoring the Lubos Kohoutek (Rooster) comet. A "debrecinky" buffet on Dec. 22nd featured Mr. Jim SeEVERS, Assistant Astronomer of the Adler Planetarium in Chicago. Collectors interested in purchasing this unusual postage meter cachet should contact Joe Janecka (7306 Ogden Ave., Riverside, Ill. 60546) who is both a Director of our SOCIETY and President of the First Czechoslovak Club.

We are pleased to report that member Vaclav Vanik received a Gold Award at SUPLEX (Suburban Collector's Club of Chicago) for his Czechoslovakia 1923-27 Specialized Study of the Postally Used Copies of this Period. Congratulations!

Lastly, a word of welcome and appreciation to our new Editorial Board for (in most cases) answering the draft call, and congratulations to Managing Editor Harlan Miller on being elected to Honorary Membership.

HH

### Two Interesting Covers from Czechoslovak Scout Postal History

By Ivo Kvasnicka  
Translated by Frank J. Kovarik

(The following two short articles have been secured through the efforts of Mr. Lester A. Behnke, SCP. The authors request that readers having additional information concerning the subject of either article contact the Editor.)

Cover #1 shows two of the Hungarian Scout stamps of 1939 (Scott #551 and 553) used in the territory of former Czechoslovakia.

After the Hungarian-Slovakian territorial dispute was resolved November 2, 1938 by the Vienna arbitration, Hungary occupied all of the southern part of Slovakia. From the first day of the occupation, Hungarian stamps and cancelling devices were used.



The illustrated cover franked with Hungarian Scout stamps was sent from the occupied Slovakian city of Kosice (Kassa in Hungarian), and addressed to a city in Czechoslovakian territory then occupied by Germany.

Cover #2 is from a group of Czechoslovakian Scouts in China.

During the occupation of Czechoslovakia by Nazi Germany, a portion of the Czechoslovak Rover-Scouts (Scout Resistance Group) was organized in Shanghai, China, by Scout E. J. Stembera. This group assembled and trained 40 members of which many volunteered their services to the Allied Forces.

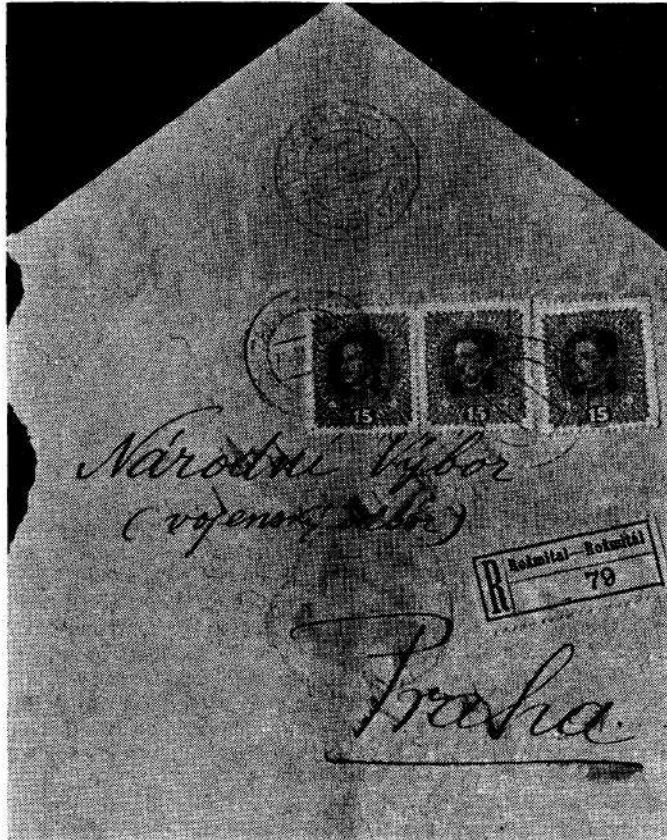
The illustrated cover was sent from China to Czechoslovakia after the war (1946) when international communications were re-established.



## Czech Scouts—Rozmítal 1918

By Jan Dvorak and Lester A. Behnke

Fifty-five years ago, a Scout handstamp was used in the town of Rozmítal, Czechoslovakia. This was only discovered a few years ago, used on two covers.



The illustration shows a registered cover from Rozmítal, addressed to the National Committee in Prague, and carries three of the 15h Austrian stamps, Scott #168. The cancel shows a date of November 2, 1918. The handstamp was placed on the back flap of the envelope, and reads: "First Czech Scout's Mail—Rozmítal."

While considerable information is available regarding the Scout Mail service in Prague at the same time, when Czechoslovakia became a Republic, nothing is known regarding the background of this Scout mail service. Who organized this service, and how long was it in use?

### NEW MEMBERS

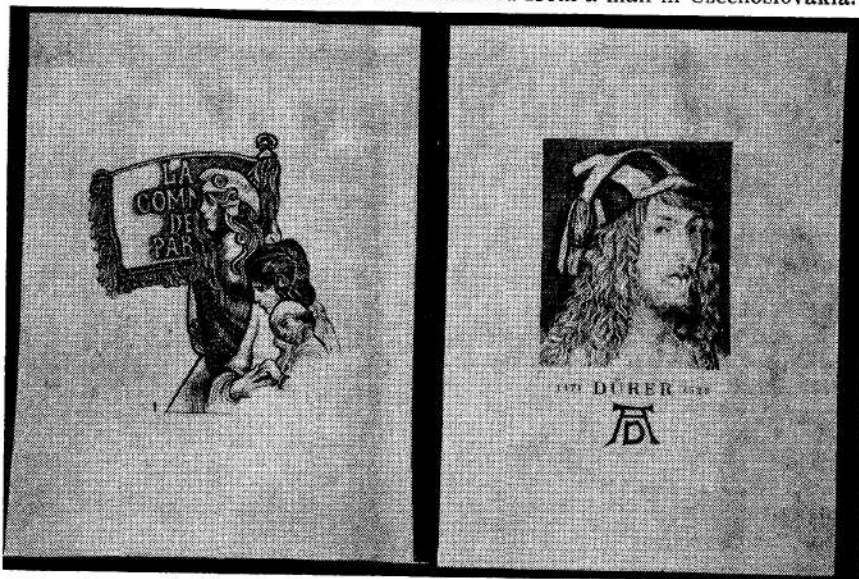
- 1022 William G. Byerley, 2078 Hyde Park Road, #25, Jacksonville, FL 32210
- 1023 Thomas Gore, P. O. Box 5207 Station B, Victoria, B. C. V'R 6N4, Canada
- 1024 Joseph A. Csejka, 50 Meade Avenue, Passaic, NJ 07055



## Stumped On Stamps? ? ?

By Richard Gray, 3466 Mildred Drive, Falls Church, Virginia 22042

One of our readers submitted two miniature sheets pictured below with the question "What Is It?" The items were received from a man in Czechoslovakia.



Though I have never seen such sheets before, they appear to have been produced by the State Printing Office in Prague. The one having the engraved "1" in the lower left hand corner is part of the original engraving used on the 1971 Czechoslovak stamp honoring the Paris Commune (Pofis #1884). The "Durer" miniature sheet may possibly be of an unaccepted or later-to-be issued design. The numeral "2" on the sheet is also engraved.

I believe that these miniature sheets were printed for the daily newspaper "Mladá Fronta" (Youth Front) in Prague, which sponsors a yearly contest in which readers vote for the best Czechoslovak stamp design of the year. Each voter receives as an incentive a "philatelic souvenir"—similar to the two items pictured here. It is interesting to speculate on the meaning of the engraved numbers. Were there more of these, and if so, how many?

The paper is of good quality, and the engraving itself is excellent. However, it is definitely of private origin, even though it utilizes part of the design of an issued stamp. It cannot be rated as a "černotisk" (black print), which were officially issued and are also listed in Pofis and the Novotny specialized handbook. Since all contestants, even those from abroad receive such philatelic souvenirs from "Mladá Fronta," I would estimate the issue to number in the thousands. The size is approximately  $3\frac{1}{4} \times 4\frac{3}{8}$ ", the sheets are ungummed and printed in black. My guess concerning the origin of these sheets is based on similar sheets of the same size distributed by "Mladá Fronta" having PART of the design (crown only) from the 1966 miniature sheet "Prague Castle" picturing the crown, apple and scepter of Saint Wenceslaus (Pofis #A 1523, Scott #1390). I saw this one signed in pencil by the engraver J. Švengsbir.

If any of our readers has additional information concerning these items or has knowledge of similar items—please get in touch with me.

## Expertization Services Initiated

Responding to a long standing need by collectors and dealers, we are pleased to announce establishment of an Expertization Committee whose function is to render qualified opinions as well as act as a channel for submission of material to the Expert Committee of the Svaz českých Filatelistů (Union of Czech Philatelists) in Prague.

The Committee is chaired by Dr. L. V. Fischmeister to whom material may be submitted in accordance with the RULES and FEE SCHEDULE found below. Other members of the Committee include Messrs. Charles Chesloe, Henry Hahn, Joseph Stein and Jaroslav J. Verner.

The reverse of this page is the form to be used in making submissions. Since each individual item submitted requires a separate form, collectors and dealers wishing to avail themselves of this service right away may use and/or reproduce the form. For additional forms contact the Chairman, Dr. L. V. Fischmeister, VA Hospital, Augusta, GA 30904.

### SCHEDULE OF FEES

#### I. For SOCIETY Expertization Committee evaluation only:

##### a. Per Mailing

Return postage and registry fee must be in the amount of original mailing plus 25c for handling. (\$1.50 min.)

##### b. Per Item Submitted

\$1.00 for each item to \$100 Scott or 1,500 Kčs POFIS valuation.

\$1.50 for higher value items.

(Soc. for Czechoslovak Philately Inc. members take 25% discount on paragraph 1b)

#### II. For SVAZ (Union) Evaluation in Czechoslovakia:

##### a. Per Mailing

Return postage for registry for domestic return as per paragraph Ia plus \$5 for both ways to Czechoslovakia by Air Mail, registered to maximum value (approx. \$13).

##### b. Per Item

In addition to rates per paragraph 1b, add \$1.00 for signature OR \$5 for signature with certificate.

(Please pay by check or money order to the  
Society for Czechoslovak Philately, Inc.)

For official use only.

-----  
-----

**APPLICATION FOR EXPERTIZATION SERVICES**

To the Expert Committee of the Society for Czechoslovak Philately, Inc.

I have read and agree to the REGULATIONS GOVERNING EXAMINATIONS OF CZECHOSLOVAK STAMPS BY THE EXPERT COMMITTEE OF THE SOCIETY FOR CZECHOSLOVAK PHILATELY, INC. I am the owner of the material submitted or have been authorized by ----- to submit the material for expertization.

Signature ----- Date -----

Print full name -----

Address -----

Enclosed herewith for examination is the following item believed to be:

The following information is desired:

I DO / DO NOT (cross out one) wish this item to be forwarded for examination by the Expert Committee of the Union of Czech Philatelists in Prague.

Fees enclosed:

U. S. Registered Mailing	-----	(\$1.50 min.)
Foreign Registered Mailing	-----	(\$5 per mailing)
U. S. Examination Fee	-----	(per schedule)
Foreign Examination Fee	-----	(per schedule)
Certificate Fee	-----	(\$5 per item)

Please do not fill in below:

A. Evaluation

E. Disposition



**REGULATIONS GOVERNING EXAMINATION OF CZECHOSLOVAK  
STAMPS BY THE EXPERT COMMITTEE OF THE  
SOCIETY FOR CZECHOSLOVAK PHILATELY, INC.**

**ARTICLE I**

Anyone is eligible to submit philatelic material for evaluation, subject to acceptance by the Committee.

**ARTICLE II**

**Definition**

A. Evaluation of philatelic material is understood to include: judgement of the genuineness and quality/condition of the material.

B. The evaluation will be performed by the Expert Committee of the Society for Czechoslovak Philately, Inc. The evaluation will be advisory only, except under condition outlined in article IV.

C. The President of the Society shall appoint the Chairman of the Expert Committee to serve for a two year term. The President will appoint, upon the advice of the Chairman, members of the Committee for open ended terms. Nominations for membership on the Committee shall be based solely upon the qualifications of the individual and his willingness to serve.

D. Neither the Society, Committee or its members are financially responsible for any consequences arising from the evaluation of submitted philatelic material.

**ARTICLE III**

**Material Submission**

A. Philatelic material sent to the Committee for evaluation must be sent by registered mail. Material will be returned by the same means as received by the Committee. The sender of the material is responsible for insuring his/her material during the entire period it is in the mail and while it is being examined.

B. To insure proper identity, all material sent must be lightly initialed (use of soft No. 1 pencil is recommended) on the reverse side of the item. Material must be submitted in glassine envelopes with stiff backing.

C. Each mailing may contain more than one item. It must also contain a signed application (obtainable from the COMMITTEE CHAIRMAN) on which he must indicate:

- 1) These REGULATIONS have been read and agreed to;
- 2) The sender is the owner of the material or is authorized to submit it for evaluation;
- 3) a detailed and accurate listing of material submitted.

D. He agrees to hold the SOCIETY FOR CZECHOSLOVAK PHILATELY, INC. HARMLESS for any and all losses and/or damages.

E. The Committee will return material without evaluation if the above outlined procedures are not followed.

## ARTICLE IV

**Expertization and Certificates**

A. When requested, and at the discretion of the Committee, material may be submitted to the Expert Committee of the Svaz Českých Filatelistů v Praze (Union of Czech Philatelists in Prague) for expertization and/or certification.

B. Material submitted for expertization will be evaluated by the experts of the SVAZ (UNION) and marked as appropriate:

1. If found genuine, an expertization mark will be affixed at the appropriate position on the back of the stamp or on the face of the entire. Special characteristics when important, such as perforation measurements, color shades, etc. will also be marked on the back of the stamp or on the face of the entire.

2. When material is found to be forged, altered, repaired, regummed, etc. it will be so marked. The owner of the material is understood to specifically agree to this procedure when he requests expertization.

C. Certificates of Genuineness will be issued if requested. Certificates are issued in Czech or Slovak. Sharp, glossy photographs must be submitted in 2 copies with each item for which a certificate is requested.

## ARTICLE V

**Committee Procedures**

A. The working procedures of the Committee will be established by the Chairman subject to approval by the Board of Directors of the SOCIETY.

B. All decisions of the Committee must be unanimous (of these members examining the material) before an evaluation will be rendered. The Committee reserves the right to submit "no opinion" findings.

C. The Chairman of the Committee shall determine the areas in which the committee is competent to make judgements and shall publish such findings in the Specialist for the guidance of the Society membership.

D. The Chairman shall publish periodic reports on the activities of the Expert Committee in the Specialist and will submit a general report to the Board of Directors each time it convenes.

## ARTICLE VI

**Costs and Charges**

A. The member submitting material for evaluation is responsible for all costs connected with this service. Normally these costs will comprise insurance (arranged directly by the owner), postal charges both ways, and a standard fee.

B. Fee schedules will be published in the Czechoslovak Specialist. As frequently as changing circumstances or costs require, the schedule will be reviewed and revised. Fee schedules will become effective upon publication in the Specialist.

## New Issues

November 27, 1973—"ART AND THE POSTAGE STAMP," set of six (6)  
Multicolor flat recess printed in sheets of four (4)  
The three high values are illustrated below.



December 18, 1973—"CZECHOSLOVAK POSTAGE STAMP DAY," single  
Printed with coupon on each side.



## SELL - SWAP - WANT

Every member is entitled to one free 15 word ad each year. Word count does not include name and address. Send ad to Wm. Shoenig, 20 Charles Ct., East Patchogue, NY 11772.

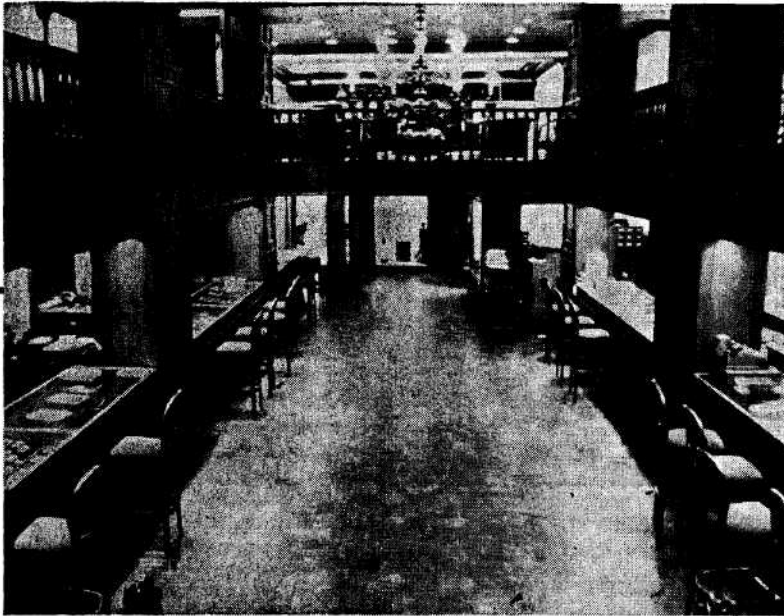
**SELL**—1957 Min. sheet Scott #831, Pofis #A967 Type II, cancelled, to the highest bidder, min. \$12. R. Gray, 3466 Mildred Dr., Falls Church, Va. 22042.

**SELL**—Bohemia-Moravia-Slovakia Handbook, hard cover, \$3.00. Wm. Schoenig, 20 Charles Court, East Patchogue, N. Y. 11772.

**SWAP**—Used and mint Czecho for your used U.S. Correspond Czech, German or English. Vlastimil Palata, Žižkova 127/15, 541 01 TRUTNOV, Czechoslovakia.

**SWAP**—Used Czecho for your used U.S. Corresponds in Czech or Slovak only. Josef Blažiček, Podvysoká 111, p. Staškov, okr. Čadca, Czechoslovakia.

**SWAP**—Mint and used Czecho for your mint and used U.S. and U.N. Correspond in Czech, German or English. Vladimír Linhart, Racek 31, 256 01 Benešov u Prahy, Czechoslovakia.



Interior view of two of our 4 floors at 3 East 57th Street

## we're more than just a pretty face or the world's most beautiful stamp store

Our activity in the editorial management of the Scott's Catalogs and our unique tradition as the world's first major stamp auction house, are your assurance of unparalleled expertise and integrity.

Buying or selling . . . at auction or through direct sale . . . the extraordinary facilities of Harmer Rooke mean efficient, expeditious and courteous service.

*NO DISTANCE TOO GREAT! NO PROPERTY TOO LARGE!*

**DIRECT INQUIRY MAY BE MADE BY CALLING, TOLL FREE,  
ON THE HARMER ROOKE "HOT-LINE" 800-221-7276**  
from anywhere in Continental U.S.A. except New York State  
(In New York, Call (212) PLaza 1-1900)

*HR* **Harmer, Rooke & Co., Inc.**  
INTERNATIONAL AUCTIONEERS • SALES AGENTS • APPRAISERS

3 East 57th Street New York, N.Y. 10022 (212) PLaza 1-1900

ESTABLISHED: LONDON 1903 • NEW YORK 1939

## Charley's Corner

By Charles Chesloe

Box 237, Willow Springs, Ill. 60480

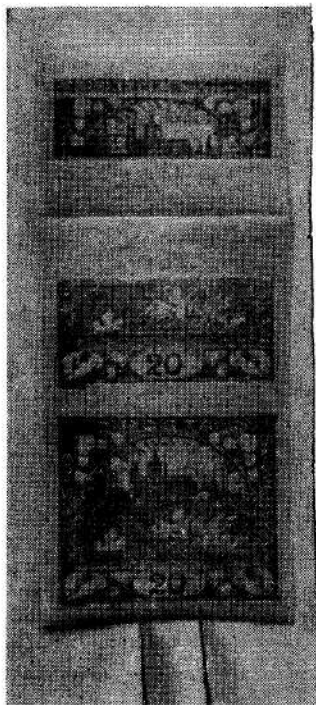


Fig. 1

Probably the most MISprinted stamp from the period of the First Republic is the 20 heller "bluish-green" imperforate Hradčany of the first design (Scott #4, Pofis #9). Due to loose controls at the Printing Office, an abundant amount of this material was smuggled out.

Figs. 1, 2, and 3 show various paper-fold misprints.

Fig. 4 shows a strip folded over itself where the part of the impression shown at the right was applied to the gummed side (přeložka). Fig. 5 shows a pair printed on the bummed side only due to a fold over of the sheet.

Fig. 6 shows a partial printing variety due to the unprinted portion being under folded (podložka).

## We offer CZECHOSLOVAKIA

Compl. years	Mint	Used
1972 (76 stamps) ----- (incl. overpr.)	23.50 POR	9.50 POR
1971 (70 stamps) -----	17.50	7.00
1970 (63 stamps) -----	10.50	6.50
1969 (65 stamps) -----	11.50	7.50
1968 ((88+3 SS) -----	17.50	12.50
1967 (86+2 SS) -----	19.00	9.50
1966 (76+3 SS) -----	22.50	12.50
1965 (91+1 SS) -----	17.50	8.50

FACSIMILE #C1-3 spec. print 1.50 |  
FACSIMILE #C4-6 spec. print 1.50 |

## Maxim Card In Color

1965 Titian #1336 -----	1.75
1967 Rousseau #1484 -----	1.75
1968 Manes #1552 -----	1.75
1969 Ptgs #1658-1662 (5) ----	6.25
1970 Ptgs #1711-1715 (5) ----	6.25

Complete MAXIM CARDS (13) 15.00

## NEW ISSUES SERVICE

Czechoslovakia MINT—USED—FDC

## 10% DISCOUNT

for all members of SOCIETY of  
CZECHOSLOVAK PHILATELY

# INTERART

P. O. Box 33, Toronto 3, Ontario  
Canada

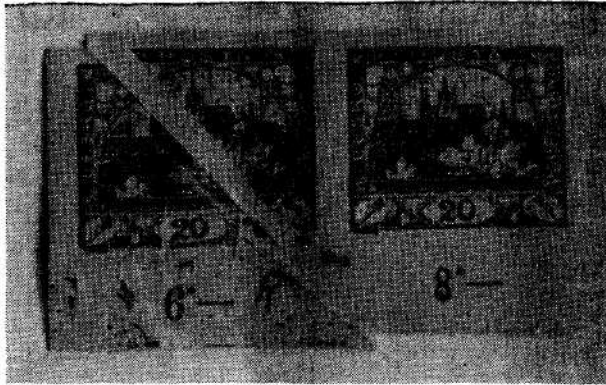


Fig. 2

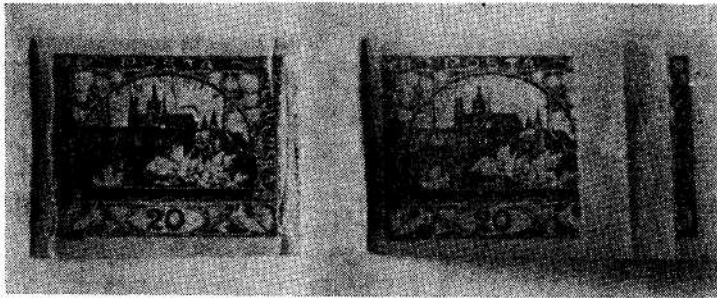


Fig. 3

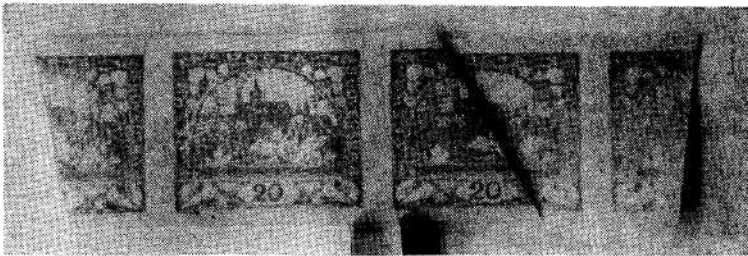


Fig. 4

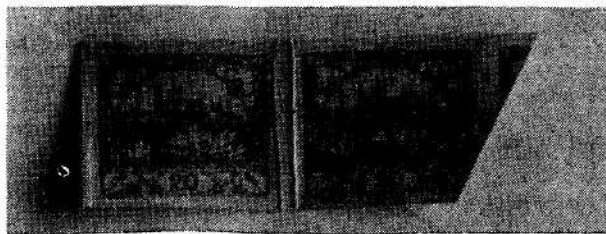


Fig. 5



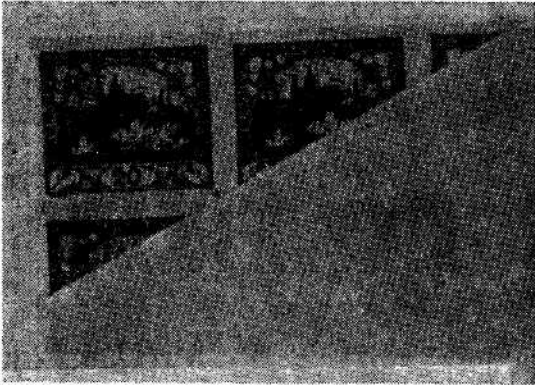


Fig. 6

Fig. 7 shows an upper right-hand pane of 10 from a sheet that was doubly printed.

Many values of the first issue exist with errors of all kinds, such as shown above and quite a few others. However my experience suggests that the 20 heller varieties are the most abundant.

Here's wishing all of you a Merry Christmas and a Happy New Year.

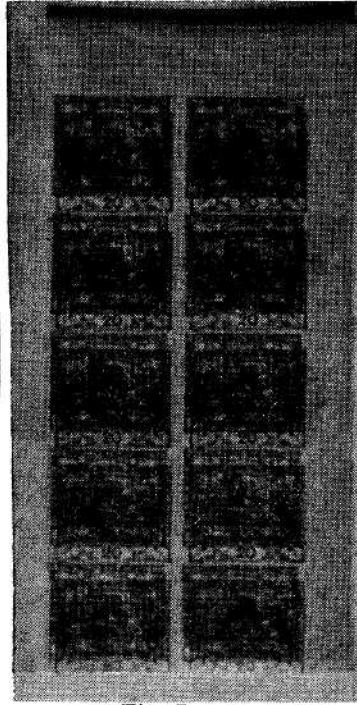


Fig. 7

Our 20th Year

# K-Line's Czechoslovakia Pages

SUPPLEMENT No. 20-1972

\$3.20 plus 55c postage

(Fully illustrated and expertly annotated)

OUR MOTTO: "Others can Beat our Price, but not the Quality"

**AS A SPECIAL FEATURE WE PROVIDE A  
CZECH NEW ISSUE SERVICE**

As a subscriber to our K-Line's Czecho New Issue Service you will receive next year's supplement at no charge, except for postage. Write for details.

**K-LINE PUBLISHING, INC.**

P. O. Box 159

Berwyn, Ill. 60402

P.S.—Besides Czecho, we have a line of pages for 15 countries and 11 Topics.

---

---

---

---

---

# WANT TO BUY

MINT MINT  
**CZECHOSLOVAKIA**

ISSUES 1923-1926  
(Scott Nos. 92-118)

Full Sheets

Part Sheets

Blocks

Die Proofs

Color Trials

Plate Proofs

Rare Perforations

Varieties

Rare Watermark Positions

**ARTHUR I. KESSLER**

221 East 78th Street

New York, N. Y. 10021

---

---

---

---

---