

THE CZECHOSLOVAK SPECIALIST

Official publication of the  Czechoslovak Philatelic Society

Copyright 1966 The Czechoslovak Philatelic Society

Editorial Board:

Dr. Wm. Reiner-Deutsch, Editor, P. O. Box 24, Bayside 61, N. Y.; W. Fritzsche, Canandaigua, N. Y.; Henry Hahn, Fairfax, Va.; Frank J. Kosik, Delavan, Wis.; C. J. Pearce, Coalgate, Okla.; J. J. Verner, Zagreb, Yugoslavia.

Vol. XXVII

March 1966

No. 261

LINE PERFORATIONS ON JOINED TYPES OF THE 100 HELLER SCIENCE AND AGRICULTURE STAMPS

by Jan Karásek, translated by J. J. Verner

It has been long believed that the joined types of the Science and Agriculture stamps all bore the comb $13\frac{3}{4} \times 13\frac{1}{2}$ perforations. The joined types are always types II and III joined either horizontally or vertically. It has not been generally known, nor has the information been published, that these joined types also bear the line $13\frac{3}{4}$ perforation.

Recently a used pair (see cut) was shown to me that had earlier been expertized by Jan Mrňák. This joined type bears a Prague cancellation dated March 5, 1925. After further consultations with František Šrámek of Hradec Kralové, I feel it is imperative that we alert specialist collectors of Czechoslovak stamps to this new find.

It is evident from the pairs of 100 heller Science and Agriculture stamps contained in most larger collections that the comb perforation is by far the more common. According to the testimony of both Jan Mrňák and František Šrámek, only one or two examples of joined types bearing line perforations have been noted to date. During my entire philatelic experience I have seen only one such pair.

Very probably, following publication of this information, additional examples of the 100 heller pairs with line perforations will appear. In the past, the perforation of the rare type II and III combination was largely ignored, but henceforth the collector would be well advised to carefully note whether he has a line or comb perforation.



Even assuming that additional line perforated type II+III pairs will make an appearance, one can safely say that the comb perforation on these pairs will remain the more common. (I have seen about 20 pairs bearing the comb perforation in the last 10 years.) Since these line perforated pairs appear so seldom, it is difficult to estimate their relative value or what a fair price should be.

EDITORIAL

In our January issue we published the fact that two cuts had been switched in the November Osbourn instalment. We wish to make it clear that this error appeared in the original Coros article and did not take place in our printer's shop (nor in the original manuscript.) We have communicated with Mr. Osbourn and received a most interesting letter from him, from Florida where he is spending his winters. Mr. Osbourn feels that though some of the designations used in that part of his article were not exact translations of the Czech words, one must not become hot and bothered by such truly not too important details. The Hungry (not Hungary) Wall should be Wall of Hunger; Lighthouse or Observation Tower, though the latter may be more correct, is really immaterial, as are also some of the designations given in German. Mr. Osbourn said that in his work at General Motors, it was very noticeable that Czechs and Germans, also Czechs and Slovaks, as well as Czechs and Slovaks of different religious affiliations, adopted a very beligerent attitude to each other. However, being an Englishman without a knowledge of those languages, it became necessary for him to use reference sources where he could. The writer was kind enough to permit us to use any part of his letter. We hope to see him sometime in March in St. Petersburg.

Our highly valued Secretary-Librarian has dropped us a few lines regarding the note of Mr. Skopecek in the January issue, in which reference was made to the serrated look of the top horizontal line of the frame of Pofis 226. Mr. Kosik referred us to Specialist volume XII, No. 2, on page 23. In that translation from Hirsch-Franek this particular characteristic was described in detail.

We have also heard from Mr. Pearson of the Czechoslovak Philatelic Society of Great Britain. We could have been more patiently waiting for a response from some of the members there, before stating that the society was apparently inactive. Of course, we said "apparently" and it actually appeared to us to be the case. We are pleased to inform our members that our sister society held a meeting on January 15, 1966, and we shall report to you on its activities in another issue.

Mrs. Iris Woodbury is continuing to maintain Kenneth's membership and is of course retaining his membership number.

COMMEMORATIVE STAMP FOR THE 50th ANNIVERSARY OF THE DECLARATION OF INDEPENDENCE AT INDEPENDENCE HALL

The majority of the Council of the Society voted in favor of the Czechoslovak Philatelic Society's support of Mr. J. J. Janecka, Jr., in his effort to secure a commemorative stamp for October 16, 1968.

Interested members are requested to communicate with the editor about signing a petition to be forwarded to member Janecka in furthering this worthy cause. The petition would then be formulated and mailed to the members for their signature. Participation by a large group of an interested Society would greatly increase the possibility of the issuance of such a stamp.

ATTENTION MEMBERS

Word has just reached us that the Convention of the Czechoslovak Philatelic Society has been scheduled for May 28, 1966, at SIPEX in Washington. We are looking forward to seeing many of you!

DINNER OF OUR SOCIETY IN WASHINGTON

May 27, 1966

Our president has informed us that he received a number of letters from members informing him that they intend to be in Washington and will attend the dinner. Reservations for twenty are being made but this may be changed to a larger number 3-4 weeks prior to the actual occasion.

We have received a note from member Vydra who kindly took it upon himself to investigate the different possibilities. It is quite likely that a restaurant close to the Shoreham will be selected, with prices ranging from \$4.50 up, including tip. One will be able to order anything on the regular menu he may wish. We feel that this is so much better for a number of reasons, among which is that arrangements are the most complicated if only one type of meal must be decided on. Many would not be pleased as happens ever so often. In this case, however, one will be able to order a meal most suited to his taste and will pay the price to the waiter or cashier directly.

We have just received word that the restaurant selected is

Yenching Palace
3524 Connecticut Ave., N. W.
Washington, D. C.

(Chinese or American food.)

NEW YORK BRANCH JANUARY MEETING

We had a fine meeting with Lolly Horechny showing us his quite interesting and very beautifully arranged Hradčany collection. He showed us how one can prevent the dropping off or displacement of material from the album pages a speaker shows. This writer has never seen it before nor did he ever think of it. One of our members said that this had been done many years ago but people had gotten away from doing it. It appealed to us very much and we may change our books to just that method.

The Branch members then talked of our Collectors Club evening and apparently there will be four members exhibiting. This will include an extensive collection of the Czechoslovak Legion in Siberia, a Hradčany collection, Masaryk and Noviny collections and a postal history collection. We are indeed very much pleased to have been asked to participate in the activities of the Collectors Club in this manner.

A number of members told us that they will be in Washington for the Society's dinner.

NEW MEMBERS

839 Mordechai S. Bar Nadav, 1791 Grand Concourse, Bronx, N. Y. 10453

CHANGES OF ADDRESS

R. K. Novitski, Box 31—224, Aurora, Colorado 69130

Capt. Edward J. Benchik, Franconia District, Engineer Section, APO,
New York 09801

Leon Schensnol, Box 227, Franklin, Mass. 02038

Mark G. Snow, 1014 Fidelity Bldg., 1940 E. 6th St., Cleveland, Ohio

TREASURER'S REPORT FOR 1965

Income		Expenses	
Dues -----	\$984.40	Print. Spec. Jan.-Dec. 1965 --	\$976.85
Gifts -----	5.00	Postage Spec. -----	185.77
Advertisements -----	169.40	Dues, APS, SPA, Federation --	12.00
Sale of Books, Spec. -----	132.44	Binding Spec. 1964 -----	30.00
Circuit Commission -----	33.22	Addressograph Plates -----	8.43
Hradčany Commission -----	.75	Postage -----	32.23
Pins -----	5.00	Misc. -----	5.25
Interest on Savings Acc't ----	22.59		
	<u>\$1,352.80</u>		<u>\$1,250.53</u>
Transfer from 1964 -----	\$1,042.04		
Income 1965 -----	1,352.80		
	<u>\$2,394.84</u>		
Expenses in 1965 -----	1,250.53		
In treasury -----	\$1,144.31**		
**In checking account -----	\$ 564.79		
In savings account -----	579.52		
	<u>\$1,144.31</u>		

This report is for the entire year of 1965.

As of this date there are absolutely no obligations outstanding.

During 1965 we had 285 paid up members and 4 honorary.

To date 130 members paid for 1966.

This report will be verified and if found correct, published in the Specialist.

During 1965 the Specialist had been enlarged to 20 pages and the dues during the year just covered the printing cost of the Specialist.

December 31, 1965 Czechoslovak Philatelic Society
Joseph Stein, Treasurer

The detailed report was found to be in agreement with the summary of transactions and balances.

January 21, 1966 Edwin J. Hanish, William Z. Schoenig
Auditors

**FIRST CZECHOSLOVAK PHILATELIC CLUB OF CHICAGO
PAN SLAV EXHIBITION**

Any one interested to exhibit at the forthcoming show of which J. J. Janicka is Chairman, please communicate with him promptly at 7306 Ogden Ave., Riverside, Ill. 60546. Write him upon receipt of this issue and ask for a prospectus.

**TRAVELING?
CZECHOSLOVAKIA SPECIALIST:**

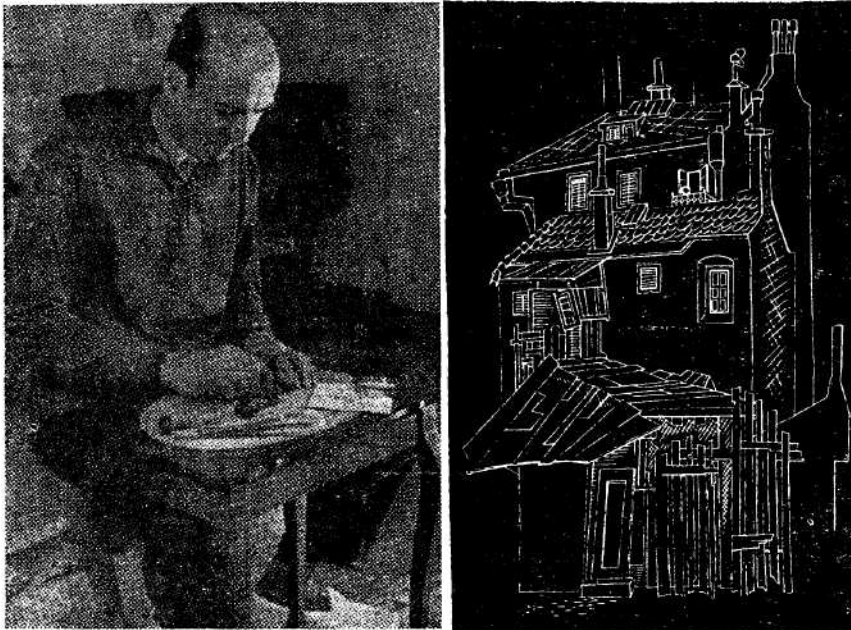
Frantisek Ales

**ALESH TRAVEL AGENCY, 1371 First Ave., New York 21
near 74th Street — Phone LE 5-4944**

Authorized Čedok (Official Travel Office Prague) representative.
Visas, Hotel Vouchers, Money transfers Tuzex, Gift Certificates, Guidebooks and maps of ČSSR. Dictionaries, Translations, Immigration Affairs, Affidavits for Visitors.

"Travel with the man who was born there".

ENGRAVER ŠVENGSBÍR SHOWS WORK
Philatelists Know Him Well



Jiří Švengsbír at work; one of his engravings of Prague

It is not usual for two exhibitions of the work of an artist to be held simultaneously, but this is what happened to Jiří Švengsbír, whose prints were put on view last month by the Friends of the Fine Arts Club in Třebíč and by the philately section of the Educational and Cultural Workers' Trade Union Club in Prague.

Jiří Švengsbír was born in Prague in 1921, and as a small boy was attracted to drawing, a fact which undoubtedly influenced his decision to become an apprentice engraver. In 1941, with his certificate fresh in his hand, he got a job in the Cartographic Institute in Prague. After working hours he attended courses in drawing at a workers' school, and in 1945 he began to study with Prof. Antonín Strnadel, under whose guidance he graduated from the Academy of Applied Arts.

A skilful engraver, he caught the attention of the Czechoslovak postal authorities, and since 1946 he has engraved more than one hundred stamps and designed 60 more. Even when working on another artist's design, Švengsbír displays a characteristic effort to approach the original drawing in his own way. Thus he is truly a co-creator, contributing his artistic talent as well as his engraver's skill.

As an original artist, too, Švengsbír uses steel engraving in addition to dry-point and engraving on copper. Working with steel, he has revived the original technique of point engraving, which he uses, with unusual feeling and masterly precision, for fine detail.

Typical for his work are motifs from nature: birds, butterflies, flowers and the sun, used on book-plates; also heraldic designs, views and objects from old engravings and portraits. Numerous trips abroad have enriched

his choice of subjects with crabs, octopuses, sea-horses and exotic flowers, often combined with architectural structures and decorative detail.

Collects Oddities

These interests are reflected in Švengsbír's hobby of collecting to create a harmonious environment. His studio is rich in old wood-cuts, chests, paintings on glass, rare books, engravings and natural objects, as well as simple things which he brought home from his tours because of the memories connected with them. Švengsbír pauses in thought before a piece of cedar from Lebanon, a sliver from an ancient ruin, or even a playing-card picked up in New York harbor. In the arrangement and combination of these subjects he often finds a source of new creative ideas.

Jiří Švengsbír likes to talk with admiration about the world's great galleries and museums, but his work bears evidence that his own country holds many attractions for him, although he likes to ridicule this as exaggerated sentimentality. However, there they are—his Prague house signs, historical motifs, the Prague, Bratislava and Zvolen castles, drawings of the National Theatre and the Smetana Museum.

A special aspect of his work is the portraits which, in economical lines, capture the likeness of Torquato Tasso, Shakespeare, Immanuel Kant, Václav Hollar, and many others.

Simple and ordinary things also have a place in Švengsbír's art. His coffee-grinder, vinegar bottle, basket of onions, or paraffin cooker seem to express the artist's gratitude for the simplest gifts of life, and his conviction that there is beauty, grace and wonder in everything around us.

The following unbound back numbers of the Specialist are available:

1940 missing Jan.-April, Oct. and Nov. -----	\$1.80
1941 missing April -----	2.70
1945 missing Jan., Feb., April and Oct. -----	1.80
1946 and 1947 complete -----	each 2.00
1948 missing March and June -----	1.60
1949 to 1961 complete -----	each 2.00
1962, 1963 and 1964 complete -----	each 3.00

Bound Volumes of Specialist—First Come First Served

1946-47, 1949, 1950-51, 1951, 1951-53, 1952-53, 1953-54, 1954,	
1954, 1954-55, 1955, 1957, 1958, 1958-59, 1959, 1960	
Single volume \$4.50, double \$6.50 and triple \$8.50	
1962 1963 -----	\$5.50 each

**BOHEMIA-MORAVIA-SLOVAKIA
HANDBOOK
Bound \$1.50**

**ENGLISH-CZECH and
CZECH-ENGLISH
PHILATELIC VOCABULARY
Bound \$1.25**

Always include 25 cents for postage and handling for each order of any volume of Specialists or bound publications on sale.

ORDER from the TREASURER

JOSEPH STEIN

585 East 21 Street

Brooklyn, N. Y. 11226

Padělky Československých Poštovních Známek

Translated by Henry Hahn

Continued

Illustration

Genuine

1. In the date 1934, the oval portion of the numeral 9 is not closed.
2. The neck of the plowman is divided into three white, oblong and skew areas, which are frequently inked over.
3. Above the letter N in the title ČESKOSLOVENSKO there appears a slanted, thin line, outside of the design.
4. Interrupted line.
5. The title ČESKOSLOVENSKO is located on the second line, above the frame.
6. In the second letter O there are three lines.
7. There is a dot on the head of the reclining boy.
8. The ear of the ox is joined to the head by means of an open, white area.
9. Two peaks have unequal heights, the right one being lower.
10. Various dots and lines within and without the design (see illustration).

Page 218

Illustration

Page 219

Counterfeit A (to defraud collectors)

2 Kč dark blue

The counterfeit was distributed together with counterfeit A of the 1 Kč value. It was printed on the same paper, gray-yellowish in color with perforation openings of varying and non-uniform size. The vertical dimensions of the design is uneven, the right side being higher. A typical distinction in the drawing is illustrated in point 8. Under ultraviolet light the paper appears gray, and the color of the illustration appears dark blue.

Engraved printing.

Design dimensions 30.3x17.1 mm (left)
x17.3 mm (right)

Illustration

Counterfeit

1. In the date 1934 the oval portion of the numeral 9 is closed.
2. The neck of the plowman is divided into two white areas.
3. Above the letter N, the slanted, thin line is lacking.
4. The line is uninterrupted.
5. The base of the letter C and S in the title ČESKOSLOVENSKO is on the first line.
6. In the second letter O there are four lines.
7. On the head of the reclining boy there are two divided lines.
8. The ear of the ox in the background has the shape of a closed ellipse, while the second ox, grazing in the foreground, has shading in the hind quarter.
9. The peaks are equally high.
10. Dots and lines are lacking, or appear in other places (see illustration).

By permission of the Czechoslovak Theatrical and Literary Agency, DILIA.

Page 220

Counterfeit B (to defraud collectors)

2 Kč dark blue

Printed by the same means as previous counterfeits—from a further improved plate. The differences in the transferred design are easily visible, particularly at points 1 and 9.

Engraved printing.

Design dimensions: 30x17 mm

Illustration**Counterfeit**

1. In the date 1934, the oval portion of the numeral 9 is closed, and in the numeral 3, there is an extra curve at the bottom.
2. The white areas on the neck of the plowman are lacking.
3. The thin slanted line above the letter N is lacking.
4. The line is uninterrupted.
5. In the title ČESKOSLOVENSKO, the base of the letters C and S is on the first line.
6. In the second letter O there are four lines.
7. On the head of the reclining boy there are two heavy, connected dots.
8. The ear of the ox has the shape of a closed ellipse and is often inked over.
9. The peaks are equally high.
10. Dots and lines are lacking, or appear in other places (see illustration).

Page 221

Counterfeit C (to defraud collectors)

2 Kč deep dark blue

The counterfeit is printed by means of another plate, which once again left certain distinguishing marks in the design, particularly at locations 2 and 9. The color of the counterfeit is very dark in comparison with the genuine, and the paper is stiff and smooth. Under ultraviolet light the paper appears white, and the color of the design of the stamp appears blue-black.

Engraved printing.

Design dimensions: 30x17 mm

Illustration**Counterfeit**

1. In the date 1834, in the numeral 8, both ovals are of equal size while in the genuine the lower oval is larger. In the date 1934 the oval in the numeral 9 is closed.
2. The neck of the plowman is divided into two white areas, sometimes indistinct, and the violinist has a protruding "hair."
3. The slanted thin line above the letter N is missing.
4. The line is uninterrupted.
5. In the title ČESKOSLOVENSKO the base of the letters C and S are on the first line.
6. In the second letter O there are four lines.
7. On the head of the reclining boy there are two dots.
8. The ear of the ox has the shape of a closed ellipse.
9. The left peak is lower.
10. Dots and lines are lacking, or appear in other places (see illustration).

Page 222

Counterfeit D (to defraud collectors)

2 Kč dark, dirty blue

The counterfeiter, taking advantage of his experience with his first counterfeit, attempted to remove noticeable errors. The design is coarser, the paper slightly yellowish, soft carton. The perforation openings are larger and uneven.

Engraved printing.

Design dimensions: 30x17 mm

Illustration

Counterfeit

1. In the dates 1834 and 1934 there are short distinct dashes between the numerals 8-3 and 1-9 respectively.
2. The neck of the plowman is divided into two white areas, sometimes inked over.
3. The thin slanted line above the letter N is lacking.
4. The line is uninterrupted.
5. The title ČESKOSLOVENSKO resembles the genuine, the execution of the individual letters is coarser.
6. In the second letter O there are three lines.
7. The dot on the reclining boy simulates the genuine.
8. The ear of the ox is not connected with the back, and shading of the area beneath the neck is lacking.
9. The peaks resemble the genuine.
10. Dots and lines are lacking or appear in other places (see illustration).

Page 223

Counterfeit E (to defraud collectors)

2 Kč blue with darker greenish hue

The execution of this counterfeit is the most successful. The counterfeiter achieved significant refinement of the design and avoided the errors to which attention was brought through the professional journals. The paper is smooth, slightly yellowish, and the perforations are smaller and more even. Engraved printing. Design dimensions: 30x17 mm

Illustration

Counterfeit

1. In the date 1934 the oval portion of the numeral 9 is closed.
2. The neck of the plowman is divided into two white areas which sometimes appear indistinct.
3. The thin slanted line above the letter N is lacking.
4. The line is uninterrupted.
5. The title ČESKOSLOVENSKO is on the second line, as in the genuine.
6. Similar to the genuine.
7. The mark on the head of the reclining boy resembles the shape of a heart.
8. The ear of the ox is not joined to the back, and the shading under the neck is lacking.
9. The peaks simulate the genuine.
10. Dots and dashes are lacking or appear in other places (see illustration).

Page 224

Forgery (to defraud collectors)

The forger trimmed normal KDM 1 and 2 Kč stamps of the sheet issue as far as the design, thinned them down and pasted them on carton paper. Relative smoothness of the entire area was achieved by means of a press. He perforated the stamps by means of a perforating needle in accordance with the genuine, and drew the border portion of the cancellation. Forgeries of this type are not dangerous. We are publishing it only as an illustration of other means available to forgers.

Pages 225 and 226

(Russian, English, French, German and Spanish text)

Page 227

ARRAS

After a drawing by Jar. Hruška.

Engraver: Karel Seizinger

1 Kč red

Validity: May 4, 1935-Feb. 28, 1937

(Catalog numbers listed)

Perforation: line 9%

Commemorative stamps issued on occasion of the 20th anniversary of the battle of Arras.

Rotary steel engraving.

Design dimensions: 29.5x23.0 mm

Illustration

Genuine

1. The drawing of the clouds in the background is composed of interrupted horizontal lines.
2. The left center portion of the statue is illustrated by a white surface.
3. ARRAS is in a horizontally lined background.
4. The outlines of the letters are clear.

Page 228

Counterfeit

1 Kč red with gray overtone

The counterfeit was made by the same producer as that of the counterfeited B. Smetana issue. It is easily distinguished for its dull color and lack of clarity in the design. The gum is yellowish, smooth, without the typical horizontal gum bars.

Perforation: line 10½, uneven

Photogravure.

Design dimensions: 29.5x23.0 mm

Illustration

Printing from photogravure plates is shallow, the design is decomposed into individual dots which in the counterfeit are easily observable.

Counterfeit

1. The clouds in the background are not lined horizontally, but are dotted (photogravure texture).
2. The white area of the left central portion of the statue is dotted.
3. The background of the nave ARRAS constitutes wavy lines.
4. Outlines of letters merge.

Pages 229 and 230

B. I. T. 1937 (Russian, English, French, German and Spanish text)

Page 231

At the convening of the International Bureau of Labor (Bureau International du Travail) in Prague between October 6 and 9, 1937, a new printing of the regular postal issue, Pofis catalog numbers 305, 307 and 314 was issued with the overprint B. I. T. 1937.

Colors of the original stamps:

50 h Pofis n. 305 green

1.50 Kč 307 bright red

2 Kč 314 moss green

Colors of stamps with overprint:

326 dark green (overprint dark blue)

327 vermilion red (blue-black overprint)

328 dark green (light blue overprint)

Perforation: line 12¼

Validity: October 6, 1937-October 31, 1937

(Catalog numbers listed)

Overprint typographed.

Overprint dimensions: 10.3x1.5 mm

Illustration

Genuine

1. Numeral 1 is sliced off at the top.
2. Numeral 3 is raised above the base line.
3. The periods behind the letters B. I. T. are square in shape.

Page 232

Counterfeit of overprint (to defraud collectors)

All three values with the counterfeit overprint were circulated in 1938. The counterfeiter selected mainly used, lightly cancelled stamps, to which he

affixed the counterfeited overprint from type set. Hand printing did not achieve uniform pressure, as a result of which there is lack of clarity in the outlines of individual letters. The light blue overprint was applied lightly.

Illustration

Counterfeit

1. The upper part of the numeral 1 is not sliced off.
2. The numeral 3 is on the same base-line as the rest of the characters.
3. The periods behind the letters B. I. T. are nearly round in shape.

Pages 233-240

AIRMAIL STAMPS (Russian, English, French, German and Spanish texts)

Page 233

AIRMAIL STAMPS
(Text in Russian)

Pages 234-240

(Cont. texts in Russian, English, French, German and Spanish)

Page 241

AIRMAIL STAMPS OF THE 1st ISSUE

Czechoslovakia inaugurated international service as early as 1920, being one of the first European countries to do so. Imperforate airmail provisionals with the Hradčany design were issued on August 11, 1920.

14 Kč/200 h ultramarine, red-brown overprint, issued in quantity of 300,000 units

24 Kč/500 h red-brown, dark blue overprint, issued in quantity of 300,000 units

28 Kč/1000 h red-violet, dark green overprint, issued in quantity of 300,000 units

On September 14, 1920, perforated airmail stamps were issued.

14 Kč/200 h ultramarine, red-brown overprint, issued in quantity of 1,620,000 units

24 Kč/500 h red-brown, dark blue overprint, issued in quantity of 1,730,000 units

28 Kč/1000 h red-violet, dark green overprint, issued in quantity of 860,000 units

The stamps were valid until April 30, 1921. High rates—to Strasburg 14 Kč, to Paris 24 Kč, and to London 28 Kč—were the reason why during the entire period only some 400-450 letters were posted, which today belong among the rarities. Due to the disproportionately large issue and high nominal values, there was no interest in the stamps among collectors or even at the philatelic agency, where they remained on sale after expiration of their validity. The mint set became sought after only after official destruction of remaining supplies in the year 1933.

Counterfeit overprints appear on mint as well as on used denominations. However, complete counterfeits were produced as well.

Two Illustrations

Overprint dimensions: a) length of aircraft
b) length of propellers and denomination
c) height of numbers

Two Illustrations

Page 242

As an aid to the authentication of letters (covers) which have actually been flown, the dates of individual flights are listed below. The date of the receiving cancel need not always be in agreement with the departure date,

because, if for example the post office at Prague-Vinohrady accepted an airmail letter on October 4, 1920, it was not dispatched until October 5, 1920. Backstamps of foreign delivery offices, which are important evidence of actual acceptance of a letter for air dispatchment is also a two line stamping of the French-Roumanian company bearing the text:

COMPAGNIE FRANCO-ROUMAINE DE LA NAVIGATION AERIENNE.

Altogether 31 flights materialized between Prague-Strasbourg-Paris-London on the dates:

5, 9, 14, 19, 20, 23, 26 and 30th October, 1920.

2, 9, 19, 20, and 25th of November, 1920.

7, 19, 24, and 26th of February, 1921.

3, 5, 8, 10, 12, 15, 17, 19, 22, 24, 26, 29, 30 and 31st of March 1921.

After April 1, 1921, airmail rates were reduced considerably. Up to the issuance of a further airmail set on July 15, 1922, ordinary stamps were used. The validity of the 1st issue expired on April 30th, 1921. It may, however, still appear on heavier airpost mailings of April 1921, during which 13 flights took place on the route Prague-Paris, and 3 on the route Prague-Warsaw. Four directional labels with Czech-French text were issued.

Illustration

Letter forwarded to Paris on the inaugural flight.

Illustration

Page 243

Airmail stamps of the 1st issue

Overprint on the regular Hradčany issue of 1919.

14 Kč/200 h ultramarine

Overprint red-brown, with metallic luster.

Validity: imperforate, August 11, 1920-April 30, 1921

perforated, September 14, 1920-April 30, 1921

(Catalog numbers listed)

Imperforate Perforated 13%

Perforated 13% x 13%

Overprint performed by typography

Overprint dimensions: a) 26.5 mm

b) 25 mm

c) 4.5 mm

Illustration

Genuine

1. Head of the pilot is joined to the wing by a vertical line.
2. Support strut intersects four lines in the wing, above it, to the right, two horizontal lines approach one another.
3. Below the white area in the rudder there are three white dots.
4. Landing gear wheels are oval in shape, the thicker left side forms a notch inside, a small dot appears in the right wheel.
5. The upper portion of the rudder forms a step.
6. In the denomination marking, the number 1 has a small beak.
7. The center of the propeller is shaded.

Page 244

Counterfeit of overprint A (to defraud collectors)

14 Kč/200 h ultramarine

Overprint bright red, without luster.

The counterfeiter utilized an overprint die produced by photochemical means. Its shallowness results in inked-in areas, lack of definition in the design, and leaves a typical autotype screen. The counterfeit is not dangerous; it is found on used stamps.

Overprint dimensions: a) 26.8 mm

b) 25.5 mm

c) 4.3 mm

Illustration

Counterfeit

1. Malformed head of pilot virtually touches wing, the vertical line joining head to wing is lacking.
2. Supporting strut terminates in smeared, autotype screened wing.
3. Details in the design of the rudder are indistinct.
4. The distant wheel in the landing gear is incomplete.
5. Slight step.
6. Number 1 has large beak.
7. The propeller is dotted-in.

Page 245

Counterfeit of overprint B (to defraud collectors)

14 Kč/200 h ultramarine

Overprint chestnut-brown, without luster.

Another counterfeited overprint of unknown manufacture is made crudely, indistinctly, and contains areas of incomplete printing. When compared to the genuine, the differences are clearly evident. It represents another of a similar group of counterfeits of the 14 Kč value, which were distributed among collectors primarily in used condition.

Overprint by typography.

Overprint dimensions: a) 26.6 mm
b) 25.1 mm
c) 4.5 mm

Illustration

Counterfeit

1. Malformed head of pilot touches the wing.
2. Supporting strut reaches the fourth line in the wing—the lines, however, are only outlined.
3. The white dots in the rudder are lacking.
4. The oval wheels are executed coarsely.
5. The step toward the end of the aircraft continues by means of a wavy outline.
6. In the denomination marking, the number 4 is rounded at the top.
7. In the crude design of the propeller, the shading is indistinct.

Page 246

Counterfeit of overprint C (to defraud collectors)

14 Kč/5 h light green

Overprint in various colors.

The counterfeiter transcribed the overprint from the genuine, and prepared a die. Many details do not agree with the genuine design, and the ink is deposited more thickly. Various denominations of the Hradčany issue were provided with this overprint, as were also stamps of the Legionaire and special delivery issues, and overprints also appear on white paper and were circulated as trial proofs.

Overprint produced by typography.

Overprint dimensions: a) 26.8 mm
b) 25.3 mm
c) 4.4 mm

Illustration

Counterfeit

1. Drawing of head gives the impression of a lower seated pilot.
2. Supporting strut is heavier.
3. White dots are lacking.
4. The wheels of the landing gear are executed more crudely, the cross-bars are incomplete.

5. In the upper outline of the rudder, the step is shallower, the lower portion is rounded.
6. The denomination number 1 is higher and has a longer beak, the number 4 is thin, wider, and arched in the upper portion.
7. The design of both propellers differs considerably from the genuine.

Page 247

Counterfeit D (to defraud collectors)

Counterfeited basic stamp, 200 h Hradčany (for description see chapt. Hradčany, counterfeit B).

14 Kč/200 h blue in many shades

Overprint light brown-red, without luster.

The counterfeiters produced the original stamps, which they offered to collectors without overprint and with overprint produced by photochemical means.

Overprint produced by typography. Overprint dimensions: a) 27.6 mm
b) 25.5 mm
c) 4.4 mm

Illustration

Counterfeit

1. Head of pilot is considerably smaller, and not joined to wing.
2. Supporting strut terminates at third line, frequently inked in.
3. In shading under white area in rudder, the three dots are not distinguishable.
4. Oval wheels are without the typical line thickening and notching.
5. The upper portion of the rudder is executed crudely, frequently inked over. In the lower portion there is a broken line.
6. The hook in the letter c is fuller, cut skewly on the right.
7. The center of the propeller lacks internal shading.

Page 248

Counterfeit E (to defraud collectors)

Counterfeited basic stamp, 200 h Hradčany (for description see Chapt. Hradčany, counterfeit B).

14 Kč/200 h blue in numerous shades

Overprint brown-red, without luster

Counterfeited overprint is of the same origin as overprint D. However, the counterfeiter corrected some of the major errors, so as to approach the genuine as closely as possible.

Overprint produced by typography. Overprint dimensions: a) 26.2 mm
b) 24.8 mm
c) 4.5 mm

Illustration

Counterfeit

1. Head of the pilot is adapted to the genuine.
2. Lines in the wing above the extended supporting strut do not merge.
3. The design is made to resemble the genuine, between the first and second dot the horizontal line is often lacking.
4. The wheels of the landing gear are oval in shape, in the right wheel there is a malformed, large elliptical dot.
5. The upper portion of the rudder resembles the genuine.
6. The lower portion of the letter c is more closed.
7. The propellers are made to resemble the genuine.

(to be continued)

THE NEW FEDERATION OF CZECHOSLOVAK PHILATELISTS FORMULATES ITS TASK

The lead article in one of the issues of *Filatelie* (June 1965) devoted considerable space to the tasks of the newly established Federation, which "is to manage Czechoslovak philately and be responsible for its existence and future development in expert, political and economic matters." Without going into any specifics, the article states that the activity of the former top Czech philatelist organization, ÚČSF (Ústředí Československých Filatelistu) was subjected to "constructive criticism" in order to forego "the past errors and any practices inconsistent with the social interests as well as socially compatible personal interests of individual philatelists." The new tasks require the establishment of several working committees including those on economics, exhibitions, domestic and international, and technical matters. The article also demands a sweeping reorganization of existing working committees as well as the replacement of the entire editorial board of the official organ "*Filatelie*." It states that the official organ must take care of not only experts but beginners and young collectors as well as publishing suitable articles for them.

Among the most pressing problems and tasks, the Federation must give priority to the following three. First: stamp exchange with philatelists abroad; second: Pofis new issue service, and third: foreign exchange fees for Czech exhibitors at international stamp exhibitions. The first two of these problems affect the largest number of Czech philatelists according to the article. Both were subjected to extensive discussions at local and regional meetings. The most debated problem appears to be the exchange with foreign philatelists. The article continues, "We believe that the first task of our Federation should be a demand for cutting down to the minimum the present lengthy administrative procedures connected with such an exchange. As far as the maximum value of the exchange material is concerned, the Federation should press for a reasonable increase of this value per year acceptable to both the collector and the official authorities. One has to understand that while this exchange must not injure the interests of the Czech stamp export, it must, at the same time, also satisfy reasonable and legitimate needs of our philatelists in order to help them to build up their own collections of valuable foreign stamps." Only the members would be allowed to participate in foreign stamp exchange. The Federation will also press for the abandonment of a 3 months' embargo of exchanges of newly issued Czech stamps. "We consider this rule unsuitable and impractical, since the serious collector would wait for the new issues anyway." As to the second most important problem—namely, the POFIS new issue service for the collectors, the article says that the Federation will request this internal service for the collectors to be restricted to its members and unorganized collectors should be excluded completely. The Federation emphasizes that this service should be one of the exclusive advantages of its membership. Likewise the Federation thinks that any restrictions on sale of special issues like souvenir sheets and sheetlets with special inscriptions to individual philatelists (at present four to each individual purchase) are completely unjustified and should be abolished. (LHV)

Editor's Comment:

This Editor's view has always been that philately is a hobby on its own and quite separate from any consideration of world politics.

Though stamps usually present a country's history, geography or, possibly political aims, the discussion of those aims has no place in a philatelic Society or Journal.

SIPEX COMMITTEE CHAIRMEN NAMED

An in-depth group of experienced and enthusiastic philatelists has been named to key positions for SIPEX, the Sixth International Philatelic Exhibition, to be held May 21-30 in Washington, D. C.

Robert C. Masters, editor of the *United States Specialist*, was named chairman of the Finance Committee; and David Swit, former national publicity chairman of the Society of Philatelic Americans, was chosen to head the Publicity Committee.

Carroll L. Lloyd was selected to be chairman of the bourse, which will have 80 dealers' booths, and the exhibit of 2,200 frames of top collections from all over the world will be directed by Gordon H. Torrey. Assisting him will be Horace W. Harrison, in charge of frames, and Leonard M. Dulberg, who will be responsible for mounting.

Jerome S. Wagshal was named General Counsel, and Herbert A. Trenchard and Seymour B. Stiss were designated co-chairmen of official SIPEX publications. Other chairmen are Milton Mitchell, government liaison; L. A. Brown, junior activities; and Helen F. Demond, ladies activities.

To be held in Washington's Shoreham Hotel, SIPEX will be the only international stamp show in the world this year and the first in the United States since 1956. It has the endorsements of the world-wide stamp group, the Federation Internationale de Philatelie, and of the Association for Stamp Exhibitions, sponsor of earlier U. S. shows.

A. S. E. President David Lidman has announced a co-ordinating committee including, in addition to himself, John R. Boker, Jr., Ezra Cole, H. D. S. Haverbeck, Peter G. Keller, Charles S. Lasky, George L. Lee and James A. Morton, Jr.

In addition to the exhibits and dealers' booths, SIPEX will feature the first-day sales of a U. S. stamp and souvenir sheet to be issued in honor of the show, a full program of lectures and seminars, tours of government agencies, social events and sightseeing. Information about the event may be obtained by writing SIPEX, 408 A Street, S. E., Washington, D. C. 20003.

SIPEX JUDGES NAMED; FROM 15 NATIONS

A panel of 30 distinguished stamp collectors from 15 nations has been selected to judge the Sixth International Philatelic Exhibition (SIPEX) to be held May 21-30 in Washington, D. C.

The judges not only are international in scope but also are experts in their respective philatelic fields as exhibitors, award-winners and judges at many shows.

Their combined experience over the years covers judging on 90 occasions at international exhibitions. Eighteen of the judges have served in that capacity at more than one international, and four of them have combined judging experience at 38 such shows. The panel consists of:

Earl Antrim, Nampa, Idaho; **Herbert J. Bloch**, New York, N. Y.; **John R. Boker, Jr.**, Scarsdale, N. Y.; **George W. Brett**, Washington, D. C.; **Vincent Domanski, Jr.**, Philadelphia, Pa.; **Enzo Diens**, Rome, Italy; **Hugo Fraccaroli**, Rio de Janeiro, Brazil; **Jacques Fromaigeat**, Paris, France; **John Gartner**, Melbourne, Australia; **L. B. Gatchell**, Upper Montclair, N. J.; **Henry M. Goodkind**, New York, N. Y.; **Maria Groer**, Warsaw, Poland; **H. D. S. Haverbeck**, Bernardsville, N. J.; **Werner Hoexter**, Haifa, Israel; **H. R. Holmes**, Lymington, England; **Soichi Ichida**, Tokyo, Japan.

Also **Alvaro Bonilla Lara**, Santiago, Chile; **David Lidman**, New York, N. Y.; **Robert Lullin**, Geneva, Switzerland; **William H. Maisel**, Lutherville, Md.;

Georg Menzinsky, Djursholm, Sweden; Charles F. Meroni, Chicago, Ill.; Emilio Obregon, Mexico City, Mexico; Robert S. Oesch, Los Angeles, Cal.; Rafael Oriol, Caracas, Venezuela; Basil C. Pearce, Piedmont, Cal.; Pierre Seguy, Saar, Germany; James N. Sissons, Toronto, Canada; William Stericker, Upper Darby, Pa.; Karl K. Wolter, Munchen, West Germany.

Judges Groer, Obregon and Oesch will be responsible for topical collections, while Lidman and Seguy judge literature. Mr. Lullin is the panel's representative from the Federation Internationale de Philatelie, the world-wide stamp group.

Information about the exhibition may be obtained by writing SIPEX, 408 A Street, S. E., Washington, D. C. 20003.

Parade Of New Issues

Edited by Frank Kosik

Dog Commemoratives



30 h—International Dog Breeders' Congress, Prague 1965. Slovak "Kopov" tracking dog. Colors, dark grey and red.

40 h—World Dog Show, Brno 1965. German Shepherd. Colors, black and yellow

60 h—World Dog Show, Brno 1965. Czech Terrier "Fousek." Colors, black and red-brown.

1 Kčs—International Dog Breeders' Congress, Prague 1965. Poodle. Colors, black and violet.

1.60 Kčs—FCI General Assembly, Prague 1965. Czech Terrier. Colors, black and orange.

2 Kčs—FCI General Assembly, Prague 1965. Afghan Hound. Colors, dark grey and orange.

On June 10, 1965, the Czechoslovak Post and Telecommunications Administration issued a series of six commemorative stamps entitled "Dogs." Each of the three pairs is dedicated to a special event in the field of dog breeding which took place in 1965: The International Dog Breeders' Congress (June 14 Prague), The General Assembly of the International Dog Breeders' Organization—FCI (Federation Cynologique Internationale) (June 15 and 16—Prague), and the World Dog Show (June 19 and 20—Brno).

The series depicts six different dogs, the stamp pictures being designed by Mirko Hanák, academic painter and graphic artist, and engraved by Ladislav Jirka. The stamps are printed by the rotary recess print combined with photogravure in sheets of 50. The dimensions of the stamp picture are 41x23 mm in width. Three First Day Covers designed by Mirko Hanák and engraved by Jaroslav Goldschmied will be issued with the series.

Cultural Events and Anniversaries



Issued on the 10th July, 1965:

- 0.60 Kčs—Jan Hus—1415-1965—UNESCO—the 550th Anniversary of the death of Jan Hus. Designed by Josef Liesler, engraved by Jindra Schmidt, Colors: dark and red.
- 0.60 Kčs—G. J. Mendel—1865-1965—UNESCO—the 100th Anniversary of the publishing of Mendels' works. Designed by prof. Cyril Bouda, engraved by Jindra Schmidt. Colors: blue and red.
- 0.60 Kčs—JABLONEC 1965—Exhibition of jewelry with international participation. Designed by Josef Týfa, engraved by Jan Mráček. Colors: violet and gold.
- 1.—Kčs—International Telecommunications Union—UIT—1865-1965. The 100th anniversary of UIT. Designed by František Hudeček, engraved by Jan Mráček. Colors: blue and red.

The stamps were printed at the Post Printing Office in Prague by the rotary recess print. The stamp picture measures 19x23 mm for the first two and 23x30 mm for the last two.

Four First Day Covers were issued with this set. They were designed by the authors of the stamps and engraved by Jaroslav Goldschmied.

20th Anniversary of Czechoslovakia's Liberation

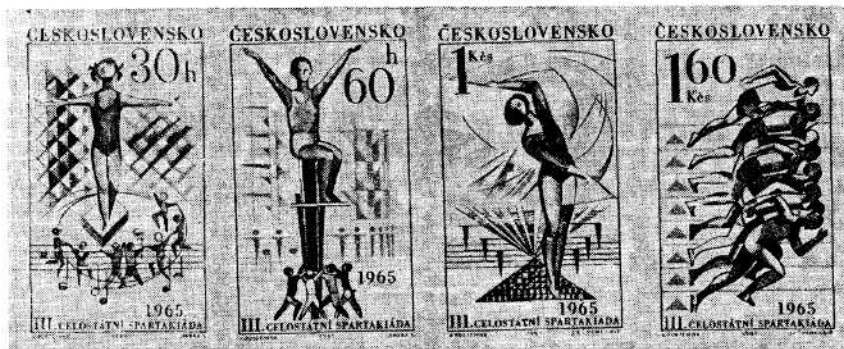


On May 5, 1965, the Czechoslovak Post and Telecommunications administration issued a series of five commemorative stamps. Designed by Jaroslav Lukocký. The stamps were printed at the Post Printing Office in Prague by the recess print in three and four colors, in sheets of ten. The dimensions of the stamp pictures are 37x23 mm.

- 30 h—The days of fighting and liberation. Colors: green, dark red and black. Engraved by Josef Herčík.

- 30 h—Reconstruction of the national economy. Colors: red, blue, violet, and black. Engraved by Jan Mráček.
- 60 h—Heavy industry, basis of the new construction. Colors: red, blue and black. Engraved by Jindra Schmidt.
- 1 Kčs—Developed social construction. Colors: orange, brown and blue. Engraved by Jan Mráček.
- 1.60 Kčs—Agricultural cooperation. Colors: red, yellow and black. Engraved by Ladislav Jirka.

IIIrd National Spartakiade



Stamps issued in May. Designed by Anna Podzemna, whose entries won the anonymous competition announced by the Post and Telecommunications administration, together with the Czechoslovak Creative Artists.

- 30 h—"In the Sun"—design inspired by the composition of the same name for children of pre-school age. Engraved by Jindra Schmidt. Colors blue and red.
- 60 h—"Over the Obstacles"—design inspired by the composition of the same name for teen-agers. Engraved by Jindra Schmidt. Colors brown and blue.
- 1 Kčs—"Movement and Beauty"—design inspired by composition of the same name for women. Engraved by Jiří Švengsbír. Colors brownish-purple and yellow.
- 1.60 Kčs—"At the Starting Line"—dedicated to the sports competition. Engraved by Jiří Švengsbír. Colors red brown and gray.

CZECHOSLOVAK COVERS AND CARDS

with special Commemorative Cancellations (1945-49)

15 cents each or 8 different for \$1.00 or

25 for \$3.00 or 100 for \$11.00

all post free

Note: The lots of 25 and 100 will have some duplication.

Orders for less than \$1.00 respectfully declined

B. J. MILLER & SON

264 East 180th Street

New York 57, N. Y.

WANT TO BUY

MINT MINT
CZECHOSLOVAKIA

ISSUES 1923-1926
(Scott Nos. 92-118)

Full Sheets

Part Sheets

Blocks

Die Proofs

Color Trials

Plate Proofs

Rare Perforations

Varieties

Rare Watermark Positions

ARTHUR I. KESSLER

551 Fifth Ave.

New York 17, N. Y.
