

THE CZECHOSLOVAK SPECIALIST

OFFICIAL MONTHLY PUBLICATION OF THE
CZECHOSLOVAK PHILATELIC SOCIETY OF NORTH AMERICA

Copyright 1951 The Czechoslovak Philatelic Society of North America

Editor Frank J. Kovarik, 2502 So. Kedzie Ave., Chicago 23, Ill.

Vol. XIII

May 1951

No. 5

EDITORIAL

As this is written, less than one day from the opening of our Show, almost everything seems a little brighter, except the weather. The sad note will be found on another page of this issue of the Specialist.

First of all, let us look at our special issue of the magazine STAMPS. As we open to the editorial page we find something not entirely connected with us, our show or our Society, except that we read of Garfield-Perry Club's Annual Party at which our past president, G. A. Blizil, received the McCloud Trophy for the best foreign; he showed Czechoslovakia. Farther on we read our friend received one other citation, the Hanford Trophy, for advancement to Philately in general during 1950. The bottom of the page shows a photo of Cleveland's fine philatelists including, of course, our genial G. A. B. We then turn the page to read of our show and auction as also a short history of our Society. Blizil's article, "Caught in the Snare" is very timely and though more topical than philatelic, deals entirely with examples of the recent Czechoslovak stamps. John Velek's article on the Provisional Postage Dues is very interesting and our own short dissertation on the postmarks of Praha is readable. All in all, it is another fine ad for our Society and the stamps of the land of those great democratic statesmen, Masaryk, Beneš and Štefanik. These men are not forgotten. They are remembered in their homeland; with love by all democratic people and with extreme diabolical hatred by the great lovers of peace. All three articles will be reprinted in future issues of the Specialist. To Mr. Lindquist, publisher of Stamps, Mrs. Downs, the editor, the entire force of this fine philatelic weekly, our most sincere and hearty thanks for a job well done.

In a recent letter from Czechoslovakia our correspondent advises collectors of U. S. who exchange stamps with collectors overseas to place mint copies between sheets of "silk paper." Your editor has exchanged many stamps with collectors in tropical countries and finds that dusting stamps with talcum powder is most effective.

Our treasurer writes: "A few members have written long letters regarding the collection of dues. They still do not catch on to the idea that the printed envelope IS THE BILL FOR DUES which also, for their convenience, doubles for a postage free envelope to mail in their dues. Could you devote a couple of lines to this; each year I get these remarks and I appreciate knowing we have interest among the members, I shouldn't want them or any others secretly sharing such thoughts, to think we do not know how to conduct the business of the Society."

Your editor frequently receives letters from collectors in Czechoslovakia

who want to exchange stamps with Americans. It is impossible to answer all requests. The last two bear the following addresses: František Hladeček, Hlavní ul. č. 76, Dalovice u Karl. Varů, ČSR and Ing. Ant. Novotný, minister-ský rada v. v., Praha-Spořilov č. 1431, ČSR.

From Orbis we obtained a listing and price list of Postal Stationery. As the prices quoted are in U. S. money, we are sure many of our members may want it. The address is: ORBIS, Export and Import Dept., 37 Narodni, Praha 1, CSR. When writing, please mention the Specialist.

Since the end of WW II we have tried to keep up with the philatelic periodicals and pamphlets published in Czechoslovakia. After 1948, that is from Jan. 1, 1949, only two philatelic publications were allowed in the country. The one published in Bratislava has reached us more or less spasmodically, mostly less; the Praha publication was issued regularly but reached us very irregularly. After the sixth issue, we received nothing. After a complaint, all issues from No. 7 to 14 were sent us and again nothing more. Another complaint and a letter reached us now that the balance of the 1950 issues are being sent and with it comes a note that it ceases publication with issue No. 24 and that a new publication will appear as a semi-monthly. A sample is at hand; of the three publications only the Bratislava lives up to the old standard.

ITEP. These are the initials of the International Exhibition of Centenary Postage Stamp. This big Show will take place in Utrecht, the Netherlands, under the patronship of many internationally famous philatelists as also H. R. H. Prince Bernhard, Queen Juliana's Consort.

OUR PRAHA LETTER

The big news in our country is the new philatelic publication "Filatelie," a semi-monthly which will sell at 3.Kčs a copy. The publishers are the same as those who publish "Práce," the leading communist paper in Czechoslovakia. Incidentally, the title of the philatelic column of "Práce" is "Filatelie." Twenty issues of "Filatelie" are assured in 1951.

Many collectors wondered if the souvenir sheets of the Praha issue may be used in severed condition on mail. The Post Office Department assures collectors these are postage stamps and need not be plastered on envelopes in unsevered condition.

Some time ago the Specialist published the program of the New Issues contemplated by the P. O. D. We understand the department maintains the right to change this plan except that the chief aim of the program must not be by-passed. The postal emissions have but one task and that is to acquaint everyone with the political aspirations of the country.

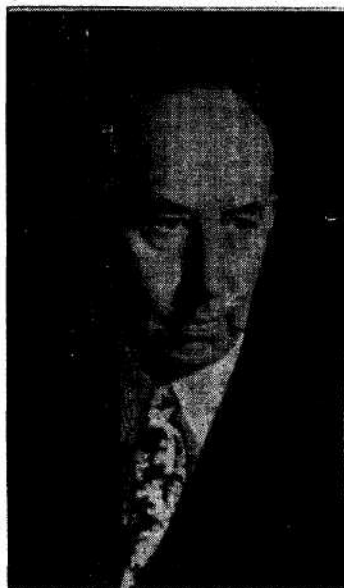
At the philatelic exhibition in Plzen the local collectors were treated to a surprise, the 5.Kčs Julius Fučík Commemorative stamp in a souvenir sheet of 12 stamps. This was being sold to interested collectors for 325.Kčs, considerably over face. The collectors immediately petitioned the P. O. D. to earmark one sheet to every accredited collector in the country at face.

Among the new issues to make their appearance in the near future are the Air Mail definitives showing the country's spas, new regular issues with the portrait of president Gottwald, commemorative stamps honoring the composers Antonín Dvořák and Bedřich Smetana.

The opening of the new philatelic Museum in Praha is expected soon. When this auspicious day arrives the P. O. D. promises a commemorative cancellation. The Museum will contain all the stamps of Czechoslovakia, the U. S. S. R., other Peoples' Democratic Republics and subsequently the rest of the world. Of our own stampic treasures there will be shown submitted and accepted designs, progressive die proofs, plate proofs, color trials, etc.

A little about competitive philately within ROH. We all know that many sincere collectors in the past thirty years have done much for Czechoslovak philately. It is necessary to find others who are ready to continue in this good work but ever mindful that philately is now the hand-maiden of the workers. Speculation at the expense of the sucker-collector has been done away. Stress on scarcity and value must give way to the cultural aspects of the hobby; stamp collecting apostles have but one goal: To bring to the poor working-man the relaxation and mental and moral uplift that our hobby, within the framework of Marxian and Leninist principles, can produce. Conflict between local philatelic groups must cease immediately and nearby groups must amalgamate into one organization; this must necessarily be based upon the principles of national solidarity. Only in this way can our hobby prosper. Stamp collectors of Czechoslovakia, unite!

CHARLES WALDMANN
Patron Member No. 261



—Photo courtesy of Chicago Heights Star

In one of our recent editorials we mentioned that two members who were absent from our rolls during 1950 returned to the fold; both were too busy with other work to devote time to their hobby. We had no intention to mention names but must do so now.

Perhaps the busiest man we ever met many, many years ago, was Mr. Charles Waldmann. Members of our Society who resided in the shadows of our Capitol, especially our first treasurer, Guy Greenawalt, often talked of Charley and his ability to do many things at one time. Waldmann's knowledge of Czech stamps was almost uncanny. Pošta Československá 1919, the first two overprinted air mail issues, the Revolutionary issues of 1918, the 1934 Music Sheets, the Hradčany, these all were open books to him. His words: "This is forgery # ---- produced in ---- by ----" were never disputed. Now this authority of authorities is no more!

Charles Waldmann was born in Nitra, Czechoslovakia, in May 1895. Educated in the Royal University at Budapest, he was graduated with degrees in mechanical, electrical and civil engineering which he received in the years 1918-1920. He designed vegetable drying machinery, plant layout and similar projects for the largest dehydrating plant in Central Europe. He also installed several wood or waste fires isolated section gas producing plants and designed switchboards, panelboards and industrial control equipment.

He was responsible for electrical and mechanical installation in numerous industrial plants in America and designed and prepared specifications for mechanical equipment in structures built by the Curtiss Airplane Co. and United Cigars' manufacturing plant.

His most fruitful career was in housing development. About a dozen housing projects in our country have been designed by him; these will be a monument to his work. He served as head of the electrical and mechanical utility system of the National Housing Authority which involved work on 2,500 community projects and 250,000 dwelling units. He was the principal engineer of the Detroit area office of the Federal Housing Authority, during which time he solved serious problems in the development of the wartime city in the vicinity of the Willow Run plant.

He was a member of many Professional and Engineering Societies. His relaxation came very infrequently but when it did come, he spent it with his stamps. In fact, only a few days before he died, he told us that he spends at least one hour every morning or evening working on his stamps.

Those of us who knew him personally shall miss him very much. Many of us (and this includes your editor many times over) have relied upon him and his judgement. Besides philately Charley was interested in photography, but this hobby was subservient to stamps.

To Charles Waldmann's widow and son Thomas, the editor, in the name of every member of the Czechoslovak Philatelic Society and especially its Chicago group, extends deepest and most heartfelt sympathy. While Charles was not a member of any organized church, his belief in an afterworld was deep and sincere. His Maker understands. May he rest in peace!

OUR 1951 SHOW AND AUCTION

At this writing it is not possible to make a complete report on our annual celebration. As usual, only about a half dozen or so members came early enough to do the heavy work of setting up the show; the same applies when the show is being taken down. Several of the workers swore they'll never work on another show and the others answered "We heard that before." The evening luncheon was a fine success but again the same complaint; most members say "Let George do it" and fail to attend. There was one phase of our show that went over fine. We have not yet received a full report on our auction but all indications seem to point to a fine result; we not only met all expenses but it looks like we may wipe out last year's deficit and leave us with a little cash. The mail bidders were quite generous and we thank them; about half the auction money will come from out-of-town members. To our auctioneers Messrs. John J. Domar and Ben Reeves, our thanks and appreciation.

The judges, Messrs. Ben Reeves, Julius Steindler and J. Elmer Zinsmeister had a big job on their hands. In the Championship class Miss Mildred A. Glueck took the honors with her selected pages of Czechoslovakia. (Horechny and Kovarik were her competitors.) In the Czecho class the Grand Award which is annually presented by the New York Group and is known as the Joseph W. Lowey Memorial Trophy, was awarded to John Velek for his plated

25h Hradčany. First award went to George Kobyłka, second to James W. Adler, third to George A. Blizil and Jack Benchik. In the foreign class the first went to Clifford Aikins and second to Peter Kreischer. The first showed Great Britain 1855-57, 1p perf 14 in various shades and reconstructed sheets and the second had Australia, military occupation issues and covers from Japan. To all the participants and to the judges, especially to the judges, the Chicago Group's Committee extends most sincere thanks.

The Chicago area has about 40 members. About half of these became interested in our Society after seeing some one exhibition in the past. It is their duty to help in the future. There shall be but one more meeting this season and all are urgently requested to heed the summons sent out by Spoford. At this next meeting we shall hear the results of our 1951 show and we shall discuss the advisability or inadvisability of a show in 1952. Fellow members of the Chicago area, the case is in your hands.

NEW MEMBERS

443. Frank Stener, 807 W. 11th St., Los Angeles 15, Calif.
 444. A. J. Stoyel, 47 Kynaston Ave., Thornton Heath, Surrey, England.

CHANGES OF ADDRESS

91. Josef Novy, 355 W. 51st St., New York 19, N. Y.
 281. John J. Novotny, 10021 Galway Dr., Dallas 14, Texas.
 420. Louis Ruzicka, 18 May St., Belleville, N. Jer.
 424. Tom H. Phillips, Box 245, Stetson University, Deland, Fla.

NOTICE TO ALL PATRON MEMBERS

Your bound copies of the Specialist are going to you by insured parcel post about the 20th of April. If you fail to get your copy, please notify your editor.

PARADE OF NEW ISSUES

New Issue of Commemoratives Marking the Heavy Industry



On February 24th, 1951, the Czechoslovak Postal Administration has issued three commemoratives marking the Heavy Industry.

- 1/ 1.50 Kčs, grey
 2/ 3.— Kčs, brown-red
 3/ 4.— Kčs, grey-blue

The designs of the stamps representing
 1/ and 3/ a machine (atmospheric) hammer,
 2/ the fitting up of heavy cog-wheels,

are by J. A. Švengsbir. All the stamps bear the inscription "Heavy Industry the base of the Five Year Plan." The engraving is by the author of the stamps.

The stamps in the form of a large rectangular format, 23.5 x 37 mm in dimension, are recess printed in sheets of 70 and 35 copies. Their validity in the inland and international relations from February 24, 1951, until further notice.

A cacheted First Day Cover showing a chemical factory, designed and engraved by the author of the stamps, as well as a Collection Sheet, have been also issued.

Stamps Commemorating the International Women's Day



The March 8, 1951, on the occasion of the "International Women's Day" the Czechoslovak Postal Administration has issued three commemoratives of the following denominations:

- 1/ Woman in Industry — Kčs 1.50, olive green
- 2/ Women in Agriculture — Kčs 3.—, brown red
- 3/ International Women's Solidarity — Kčs 5.—, blue

The stamps 1/ and 3/ are the work of Václav Šprungl, the stamp 2/ has been graphically worked out by Miss Zdenka Hadrnožková.

The stamp of Kčs 1.50 depicts two women working at a machine-tool.

Kčs 3.— depicts a woman as a tractor-driver.

Kčs 5.— depicts a group of women with the portrait of a Korean woman in the foreground.

Apart from the denomination and inscription "Československo," the stamps bear also the inscription: 8.III.1951—Mezinárodní den žen—(International Women's Day).

The stamps in the form of a vertical rectangle, 28 x 35.5 mm in dimension, has been printed in photogravure by the State Printing Works "UNIE," in sheets of 100 copies. They are valid in the inland and international relations from March 8, 1951, until further notice.

A cacheted First Day Cover designed by Miroslav Mirkovič and engraved by Jaroslav Goldschmied as well as a Collection Sheet, have been also issued.

WE ARE YOUR HEADQUARTERS

for unusual Czechoslovakian material: covers, stationery, varieties and so on. If it enhances the beauty and value of your collection, WE HAVE IT.

In order to sell Czechoslovakian Postal History, we have to buy, so dig out your duplicates of better-grade specialties, errors, varieties, covers, etc. Not only Czechoslovakia, though, but the rest of Europe, too.

POSTMAN'S KNOCK
Specialists in European Postal History

Box 6

Zone 7

Cincinnati, Ohio

CZECHOSLOVAKIA

PLATING THE STAMPS OF THE FIRST ISSUE

by John Velek

Reprinted with permission from The American Philatelist

(Continued from last issue)

Position 9. There is a spot of color in the top of the stamp covering part of the left side of the O of POSTA. The third leaf at left has a dot near the top. The sun has two tiny dots above it.

Position 10. The top frame has breaks over the A of POSTA and the right scroll line and a heavy dot above the O. The right frame has small breaks above the first S, L and K of SLOVENSKA. There is a thin line after the word MUCHA—the ends touching the bottom frame line. The second right tower has an extra dot above it and another one to its right. A large piece of the sun line is missing at the right and there are two tiny dots over the sun. The long ray has a very tiny break towards the top. Most printings of this position show various fine lines in the upper right margin and in some cases a very fine line runs parallel to the right frame line almost its entire length. Many printings show a "nail head" over the S of POSTA.

Position 11. There is a colored triangle outside the lower left corner. The first right tower has two small dots above it and the dot over the second right tower is elongated. The long ray is broken about one-third of the way from the top. There is a dot on the breast of the left dove, another in the third right leaf and another in the small bush near the base. On some printings the left frame is doubled near the top.

Position 12. The lower left corner forms a long point. A white spot is on the wavy line in the base of the vignette under the small bush. There is a small dot just to the left of the first right tower and a short curved line over the second right tower.

Position 13. The left frame line is missing at the bottom for about 5 mm. and is broken at the top. The second left leaf has a dot near the left edge and the center branch of the large bush has a prominent dot of color near the top.

Position 14. The left dove has a heavy curved line in the tail—duplicated on this position in Plate II. (Billig #51). There is a dot of color in the margin outside the lower right corner. There are two dots over the spire and two more high above the sun.

Position 15. The long ray is broken near the middle and the top frame has tiny breaks over the P of POSTA and the first right scroll. The bottom frame has a break below the right side of the value tablet. There are one or two tiny dots above the first right tower depending on the printing.

Position 16. The third left leaf is broken at the top. The bottom frame is very heavy below the left hearts. The left dove has a dot near the top of the tail and the bottom right heart has a break in the right side.

Position 17. The long ray is about one-third its normal length and there is a cluster of 4 dots over the ray. There is a dot over the sun and another above the first right tower. The top frame has a break above the A of POSTA and the value tablet line has a break on the left side.

Position 18. The long ray is broken almost in the middle. There is a dot over the sun. The thin frame line above the base of the vignette has a break in the bottom of the small bush.

Position 19. The last stroke of the K of CESKO is split at the bottom. There are two small dots above the sun. The large bush has a white dot just below the top right branch.

Position 20. The wing of the left dove is broken near the top. There is a heavy dot on the top frame just to the right of the A of POSTA. The right

frame line is of double thickness near the top.

Position 21. The left side of the T of POSTA is almost broken off. This variety was transferred to Plate II. There is a dot in the first right leaf and another above the first right tower. The upper right corner is pointed. There are small dots of color along the left frame line near the top.

Position 22. The long ray has a tiny break near the middle. There is a white dot after the P and a break in the design over the O of POSTA.

Position 23. The third leaf in the left group has an elongated dot near the top.

Position 24. There is a dot of color in the bottom of the O and a small nick on the inside of the left stroke of the A in POSTA. The first right tower has a dot beside it to the right. A small cluster of dots is located just over the sun with one slightly to the left.

Position 25. A prominent white spot is located in the base of the vignette to the right of the small bush. (Billig #5bb). The left frame has two breaks over the E of CESKO.

Position 26. The tail of the right dove has a break near the bottom and there is a break in the left side of the top right heart. The center tower is dented on the left side.

Position 27. There is a break in the tablet line under the 2 and in the bottom frame under the 25. The bottom frame also has a break below the left hearts. The right frame has a break opposite the tail of the right dove.

Position 28. The left frame line has a large break above the E of CESKO and the bottom frame is broken below the value tablet. There is a break in both of the left hearts. A short ray on the left joins the center tower near the top.

Position 29. There is a heavy white line thru the O of SLOVENSKA. (Billig #5x). The third leaf of the right group has a dot near the top. There is a small dot just above the sun.

Position 30. The right dove has a line of color across the lower part of the wing. There are two breaks in the bottom frame—one on each side of the value tablet.

Position 31. The top frame is bent downward over the T of POSTA. There is a line of dots parallel to the long ray on its right (very faint in some printings); and a single dot between the sun and first right tower. A white spot is located in the panel before the P of POSTA. This variety may be rather faint in early printings.

Position 32. There is a dot on the right side of the spire—not to be confused with a similar variety on Position 81 on this plate. The long ray is broken near the top. A small dot of color is located over the sun. The usual dot over the second right tower is missing.

Position 33. There are two short curved lines on the second leaf at right. (Billig #5ee). The right frame is missing over the NS of SLOVENSKA. The value tablet has a short line at the bottom left. A small dot is located to the right of the long ray.

Position 34. There is a small white dot in the base of the vignette above the left hearts. The O of SLOVENSKA has a fine line of color thru the top. A short line precedes the word MUCHA.

Position 35. There is a short break in the bottom frame line below the left dove and a longer break in the right frame near the bottom. The long ray is shorter than normal and very thin, some printings showing one or more fine breaks.

Position 36. The value tablet is broken at the upper left. The left frame has breaks over the bottom scroll and between the S and K of CESKO. The top frame line has a break to the right of the A of POSTA. There is a white spot on the first left scroll.

Position 37. There is a break in the design above the O of POSTA and

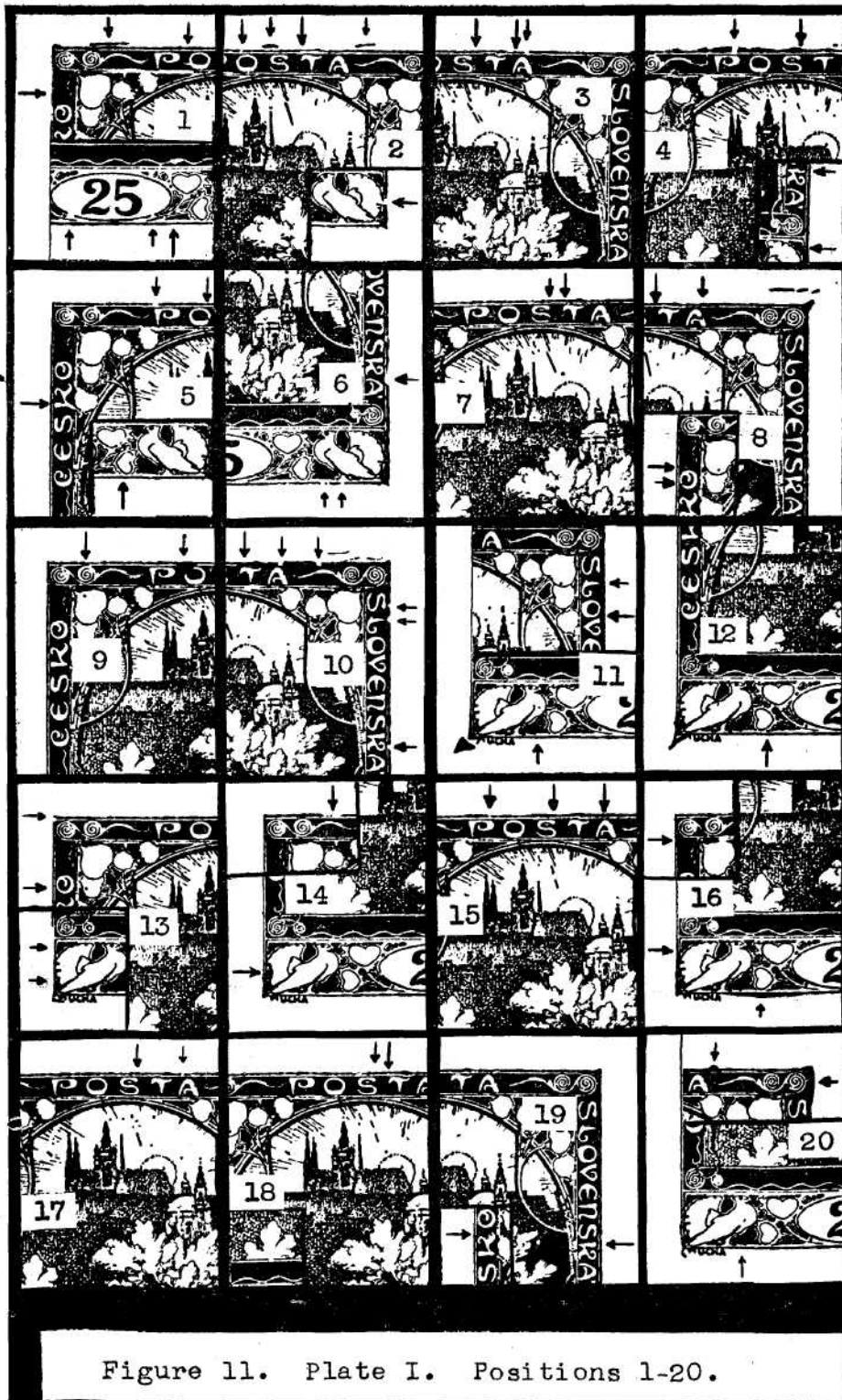


Figure 11. Plate I. Positions 1-20.

in the top frame between the P and O. There are several breaks in both the right and left hearts. A short piece is missing from the left side of the value tablet. The top of the line that outlines the short tail feathers is missing on the right dove.

Position 38. There is a large colored dot to the left of the center tower. The value tablet is broken in two places on the left side.

Position 39. There is a short line between the 2 and 5. The long ray has a dot at the lower end. The regular dot is missing over the second right tower. The left frame line has a small break over the C of CESKO and the right frame has a break over the V of SLOVENSKA.

Position 40. There is a large colored blot between the first and second leaves in the left group breaking into the first leaf. (Billig #5dd). The right dove has two dots in the tail. There are two dots on the right frame line above the O of SLOVENSKA.

Position 41. There is a dot in the value tablet after the 5. The left frame line is thick and irregular for its entire length.

Position 42. There are two short rays directly over the sun. The spire has a dot near the tip. There is a dot over the first right tower.

Position 43. The tablet line is doubled for a short distance at the lower right. The second right scroll has a small dot of color on the bottom line. There is a short line before MUCHA and the M is underlined. All these marks are very small but close examination will identify this position.

Position 44. There is a white spot above the highest branch of the large bush. The right branch is enlarged near the middle.

Position 45. There is a heavy line about half-way thru the tail of the right dove. The right stroke of the K of SLOVENSKA is very thick.

Position 46. The upper of the left hearts is broken on both sides and the lower one at the top. The bottom frame has a break at the left dove's feet and below the heart. The upper part of the wing line is missing in the left dove. There is a white spot between the large and small bushes. The thin line below the small bush is broken at the middle. The OV of SLOVENSKA is joined together. (Billig #5z).

Position 47. This is a very difficult position to identify, but the plater who is "stamped" must look for the tiniest marks to place a stamp in its proper position. Fortunately this stamp has several such tiny marks which can be found with the aid of a good glass. There are two tiny white dots in the base of the vignette above the 5. The fourth and fifth leaves at right are joined by a white space. The top frame line is very thin on the right and has a small break over the right scroll line. The sun line is weak and is missing on both sides next to the roof. The impression of the entire stamp is weak in general.

Position 48. The top frame is broken between the ST and over the A of POSTA. The second leaf at the right has a break at the bottom. The left frame has a very fine break over the E of CESKO.

Position 49. The left dove has a tiny dot on the wing. The top frame line has two breaks near the left end.

Position 50. There is a small dot above the sun. The fifth leaf in the right group has a break near the arch. The dot above the spire is much larger than in most positions. The plater should be careful not to confuse this stamp with positions 71 and 541 which also have a similar dot above the sun.

Position 51. There is a wide band of color over the upper right branch of the large bush. (Billig #5e). This variety was transferred to Plate II: The right dove has two dots in the tail and a short line in the wing. The value tablet line is partly doubled at the lower left. The left dove has a fairly prominent dot on the wing. There is a dot of color above the sun and the top frame has a break over the right scrolls.

Position 52. The value tablet has two breaks at the bottom right. The



Figure 12. Plate I. Positions 21-40.

top frame line has a large break over the TA of POSTA. (Billig #5s). There is a short white line on the right edge of the S of POSTA. The right dove has a short heavy line in the bottom of the wing and the left dove has a thin line in the tail. There are two tiny dots of color over the sun. Some printings show several additional dots in this area.

Position 53. There is a white spot in the base of the vignette under the wavy line and above the 5. The long ray has a tiny break near the middle. There is a small dot over the sun, another over the first right tower and a third to the right of the regular dot above the second tower.

Position 54. There is a dot of color between the sun and the long ray. The top frame line has a dot above the S of POSTA. There are two very tiny dots close together to the left of the center tower. The plater should compare this stamp with positions 71 and 501 before definitely placing it in this position.

Position 55. The right leg of the A of POSTA is longer than normal. There is a white spot below the N of SLOVENSKA. The top frame has a break over the right scroll line.

Position 56. The value tablet has three breaks in the top line. There are breaks in the top left and right hearts. The small bush has a white spot just above the right branch. The right frame has a break on both sides of the L of SLOVENSKA and the NS of the same word are joined at the bottom. The fourth and fifth leaves in the right group show small breaks. Most of the lines in the right dove are very weak.

Position 57. The spire is thick near the top. There is a tiny dot to the left of the center tower and one of the sun's rays touches the top of it. The top frame has two breaks at the right end—the larger to the left of the first scroll and a tiny one to the right.

Position 58. The right dove has a dot in the tail near the top. The tip of the first right tower is bent to the left. There are two breaks in the sun to the left and a tiny dot is located just above the top break.

Position 59. There is a white line through the S of POSTA extending down into the design. The base of the vignette has a small white dot below the small bush.

Position 60. There is a prominent nick in the design between the C and E of CESKO. Most printings of this position will show smudges of color in the right margin, in some cases almost the full height of the stamp.

Position 61. The long ray is broken near the bottom and is partly doubled to the right. The left frame is damaged near the top. There is a heavy colored line in the second leaf at the left. There is a dot over the first right tower. The spire is slightly thicker near the top.

Position 62. There is a dot in the left side of the value tablet and three dots in the tail of the left dove. The small bush has a curved line with a dot above it in the top branch. There are two tiny dots close together over the sun and two slightly larger dots above the first right tower. The top frame is broken over the O of POSTA.

Position 63. There is a dot above the sun to the left and another following the word MUCHA. The heavy line before the word MUCHA seems to be fairly constant in this position.

Position 64. Two pairs of small dots are located just over the sun. There is a large white dot in the section enclosed by the right branch and the arch; and another just over the small bush.

Position 65. There is a white dot above the small bush slightly to the right. The top frame has a short break above the left scroll line. Two tiny white dots are located between the OS of POSTA.

Position 66. The upper right heart has a break at the top. There is a white dot in the base of the vignette above the right hearts. The second and third leaves in the left group have breaks on the left side. The top frame line



Figure 13. Plate I. Positions 41-60.

is broken over the left scroll line and the P of POSTA and there is a small break in the design over the P. The spire is broken near the top and there are several weak spots in the sun line. The downstroke of the T of POSTA is slightly thicker than normal. The right frame has a break over the N of SLOVENSKA.

Position 67. The long ray is bent toward the right at the top. There are several small breaks in the sun. The right frame has a small nick between the OV of SLOVENSKA. The bottom frame line has a break below the right hearts.

Position 68. There are two breaks in the bottom of the value tablet line. The left frame line is broken above the O of CESKO. The sun has a large break at the right and several smaller ones at the left side.

Position 69. The top frame line has small breaks over the P and O of POSTA. There is a dot above the first tower at the right. The bottom frame line is weak below the left dove and is missing entirely in late printings.

Position 70. The 5 has a small nick on the right side. There is a white dot in the base of the vignette below the wavy line and above the right heart. The thin line of the arch is broken below the S of POSTA and the right frame has two small breaks over the first S of SLOVENSKA.

Position 71. The left frame line is heavy and uneven with several dots in the margin and is badly damaged near the top. (Billig #5jj). The E of CESKO has a white dot on the bottom stroke and there is another white dot following the O. There is a small break in the design over the right scroll line. There is a dot above the sun and a dash instead of the regular dot over the second right tower. The left dove has a small dot before the end of the wing line.

(Continued in next issue)

Various cancellations or stamps of Czechoslovakia in exchange for your stamps. Lad. Kropáč, Praha-Dolní Liboc 234, Czechoslovakia.

NEW AND RECENT ISSUES

	Mint	Used				
406-09	Democratization	--- .35	.15	430-31	P. T. T. -----	.15 ---
410-13	Nationalization	--- .35	.15	432-33	Tajovsky -----	.20 ---
414-15	Neumann	-----	.15 ---	434-35	New Prague -----	.15 ---
416-17	Nemcova	-----	.25 ---	434a	Philatelic Sheet ---	.25 ---
418-21	Student Congress	---	.35 ---	436-37	II CSR-USSR Friend	.20 ---
422-23	Fibich	-----	.33 ---	---	Peace Fighters (2 v.)	.15 ---
424-25	Army Day	-----	.15 ---	---	Fucik (2 vals.) ---	.20 ----
426-29a	Old Prague Sheet	---	.85 .75	---	Heavy Industries (3)	.26 ---

All CSR in stock — what do you need?

B. J. MILLER

Member C. P. S.

264 E. 180th St.

New York 57, N. Y.



Figure 14. Plate I. Positions 61-80.



We Buy and Sell

**All
European
Stamps**



CZECHOSLOVAKIA IS OUR SPECIALTY

Of this country we have every stamp in stock

Alfons Stach

MEMBER C. P. S. N. A.

99 NASSAU ST.

NEW YORK, N. Y.

Telephone BEckman 3-0553