

# THE CZECHOSLOVAK Specialist

Official publication of the



Czechoslovak Philatelic Society

Copyright 1964 The Czechoslovak Philatelic Society

## Editorial Board:

Dr. Wm. Reiner-Deutsch, Editor, P. O. Box 24, Bayside 61, N. Y.; W. Fritzsche, Canandaigua, N. Y.; Frank J. Kosik, Delavan, Wisc.; C. J. Pearce, Coalgate, Okla.; J. J. Verner, Poznan, Poland. Editor Emeritus: Frank J. Kovarik.

Vol. XXVI

December 1964

No. 243

## EDITORIAL

We are finishing our third year as Editor of this publication and while being engaged in writing these lines we received a fine letter from one of our members on the editorial board, expressing his praise for the October issue. Yes, we would very much like to dress up all of our issues with a hard cover but that is simply impossible. In addition we cannot permit ourselves the use of numerous large illustrations routinely, due to the high cost of such cuts. If it were in our power (moneywise) we would give our readers even more than they are getting now, though we are not complaining because we are proud of what we have been able to produce so far.

It pleases us greatly that we have only recently been appointed to head a committee on philatelic nomenclature, of the American Philatelic Society. This subject of nomenclature in science was one of our important pastimes in the thirties and now we shall endeavor to aid in clearing up much confusion in our hobby. Our good friend Wolfgang Fritzsche promised to give a helping hand as well as did Richard Graham (not a member of this society). We truly believe that with proper clarification it will become easier to understand even some of the terms used by dealers offering items at auction or else we may convince them to use the descriptive term recommended by the committee. Anyone reading philatelic articles may note the liberal use of different words in the attempt to describe actually one and the same thing. One simple error constantly encountered is the word "cancellation." To cancel means to make a stamp affixed to a cover or card postally invalid. It positively does not mean a postmark on a pre-adhesive or stampless cover. Though a postmark on a stamp is also the cancellation of such a stamp by a postmark, a cancellation can never appear on a cover without a stamp. We have given here the simplest example why a committee may be of help in making words mean the same all over the English-speaking world. We shall not go into differentiation of color designations which is a study by itself and needs an extremely exhaustive investigation.

Members please note that the beautiful bronze pins of the Czechoslovak Philatelic Society are available by writing to the treasurer, Mr. Joseph Stein, 585 East 21st St., Brooklyn, N. Y. 11226. Please enclose \$2.50 with your request and the pin will be mailed to you postpaid.

At this time we wish to emphasize the need for you to pay your dues to the treasurer, which are: active members \$3.00, sustaining members \$5.00 and

patron members \$10.00. Any member interested in receiving a copy of the Constitution of this Society, kindly communicate with the Editor, who has many copies on hand for distribution free of charge. We believe that a member can do more for his Society when he is acquainted with the rules governing the Society.

In this issue you will find a description of the Exhibition-Convention in October. It was indeed pleasing to meet so many members with whom we have only corresponded or of whom we have only heard before via the membership list. The next convention should be held in an area where many members could come from the more isolated sections of the country. It may sound strange that we are already talking about the next meeting but just today we received a letter from the Nojex president saying that they are going to have a meeting next week to discuss Nojex 1965 in great detail.

We are sorry that we missed meeting member Robert Helm at the show. On the other hand we were pleased to have our luncheon on Saturday with member Dr. John Jakes.

Our Secretary has informed us that the following collectors in Czechoslovakia desire exchange with those in the U.S.A.

Justýn Jaroslav, Čs Legii 63, Milevsko 1, ČSSR. Interested in USA new issues and FDCs, Aerograms of the world, sports on stamps, physical training and Sokol movement in USA. Has written Sokol stamp article in Filatelie.

Jan Čech, 8 Března 11, Liberec V, ČSSR. Interested in stamps of U.N.

Jan Nedelko, Milevsko 773, Okres Písek, ČSSR. Interested in birds and wild animals on stamps. He understands English well.

We are publishing the above but, of course, have no knowledge of any particular change in procedure which would make an exchange equitable.

Members please note that Mr. Frank Kohn of the Austria Philatelic Society, 350 Central Park West, New York, N. Y. 10025, is arranging for a charter flight to Vienna for WIPA 1965. He requested that we publish this for anyone interested to contact him.

We have just heard from member Ales whose advertisement appears in our Specialist. You may secure a copy of Padělky book from him for \$3.96 postpaid.

The Officers of the Society wish to extend their very best wishes for a MERRY CHRISTMAS and a HAPPY NEW YEAR.

---

#### NEW YORK BRANCH OCTOBER MEETING

The members of the branch reported on their experiences during the Show at Nojex. In general it was considered a success because there were interesting exhibits of Czechoslovak Philatelic material and also because a number of members attended whom the New York Branch members have never seen before.

We had an illustrious guest from Norway in the person of member Paul H. Jensen who was invited to our meeting by member Koplowitz. Mr. Jensen came to the USA as the representative of the Norwegian Junior Chamber of Commerce, of which he is the president, to the Junior Chamber of Commerce meeting in the midwest. Since the exhibit material had been picked up by member Reiner-Deutsch a few days before the meeting and brought to the owners of the pages, Mr. Jensen had the opportunity to admire the Masaryk collection of president Horechny.

We were pleased to hear that member Kessler would soon be back in the States and hence we will have one more in attendance at our meetings.

### THE TWENTY-FIFTH ANNIVERSARY DINNER AND CONVENTION

At our dinner on Friday night we were pleased to meet a number of out-of-town members who greatly aided in making the affair a real success. We had thirty-eight members and guests at the dinner. Present were: F. J. Auermuller, Th. Buresch, N. Feiwelsohn with wife and daughter, P. L. Flynn and wife, W. Fritzsche and wife, L. M. Horechny and wife, A. J. Hrivnak and wife with her friend, J. J. Janecka and wife, F. J. Kaps and wife, G. B. Koplowitz and wife, F. J. Kovarik, H. E. Lauffer and wife, Mrs. J. Lowey with son, daughter and son-in-law, E. J. Michaelson, Dr. J. L. Pearl, Dr. Wm. Reiner-Deutsch, Wm. Schoenig and wife, R. Secky and wife, daughter and son-in-law and J. Stein with daughter.

After the meal, president Horechny asked Dr. Reiner-Deutsch to announce the Show award winners. Only the awards given by the Czechoslovak Philatelic Society were announced, since the Nojex awards were to be presented to anyone in attendance the following evening at the Nojex banquet. Then Mr. Horechny presented a silver pin to each Charter member present. This pin is a beautifully designed one and we are sure many members will be interested in purchasing the pin in bronze. The difference can actually be hardly seen because the design in green is so predominant and striking.

Frank Kovarik and Dr. Wm. Reiner-Deutsch were then honored by a scroll for each for recognition of their services to the Society. It was an utter surprise to this writer and we consider it a fine and touching gesture.

We have said nothing so far about the quality of the food and service at the restaurant, which might be called unfair because the food was excellent and the service truly superior.

At the Convention meeting we had 16 members. Mr. R. A. Palmer of Geneva, Ill., was present, in addition to most of our members who had attended the dinner the previous night. Dr. Arnold was there after a trip to Europe. The Secretary's report was read by the president who then called on the treasurer for his report. The treasurer commented that we had 276 paid-up members and that we had lost by resignation or by dropping for non-payment of dues only four members in 1964, a most unusual record. The Editor then presented his report. Since there was no other business Mr. Horechny introduced the speaker, Mrs. Edith M. Faulstich, who gave a most interesting talk, with illustrations, on the various postal services during the Siberian Campaign of 1918-20. This of course interested our members very much and the different unusual photographs were very fascinating.

### EXHIBITION-NOJEX 1964

Robert Helm, Bronx, N. Y.: Iceland—The Numeral Cancellers. Cancellation Devices Used at Rural Collecting Beginning in 1903 (two types)

Nojex Bronze Medal

Joseph J. Janecka, Jr., Riverside, Ill.: Gettysburg 1963, 211 Contest Designs, First 10 in Ekta Color with Designers Photographs. Mostly History.

Frank J. Kovarik, Brookfield, Ill.: Prague Cancellations. Prague Cancels from Pre-stamp to Date

Cz. P. S. Bronze Medal

Joseph J. Janecka, Jr., Riverside, Ill.: Man in Four Uniforms, Russian Prisoner of War I, 1914-18

Joseph Stein, Brooklyn, N. Y.: Czechoslovak Liberation 1945 on Money Orders. Reflection of Time (Conditions) on Postal Service

Jaroslav J. Verner, APO 09695, N. Y.: Postal History of the Czechoslovak Legions in Siberia, 1918-20. Includes Stamps, Covers, Post Cards, Official Correspondence, Essays, Proofs.

Cz. P. S. Lowey Award

Cz. P. S. SPA Research Medal

Nojex Gold Medal

- C. J. Pearce, Coalgate, Okla.: Selected Pages From a Specialized Collection of the Redrawn Agriculture and Science Issue of Czechoslovakia. All Types and Perforations including the Very Rare Pair Showing Type II and III of the 100 (h) and Mint Block of the 300 (h) Type II, 13 $\frac{3}{4}$  and 13 $\frac{1}{2}$ .  
Cz. P. S. Gold Medal  
Nojex Bronze Medal
- Patrick L. Flynn, Long Island City, N. Y.: Postal Stationery of Czechoslovakia (Postal Cards). Recent Issues, Plain, Commemorative, Pictorial, etc., Post Cards.
- George B. Koplowitz, Brooklyn, N. Y.: Plate # of Czechoslovakia (1 frame). Tabs of Czechoslovakia (1 frame). Plate Numbers and Tabs of Czechoslovakia Mint.
- Gosta Hedbom, Borjesonsvagen, Sweden: Part of Specialized Mint Collection Czechoslovak Stamps 1918-1919. Revolutionary Issues with Different Types of Overprint. Hradčany Issue with Black Proofs, Wastes and Specimen, P. C. 1919 Issue with Different Types of Overprint, Off-sets and Inverted Overprints.
- L. M. Horechny, Stockholm, N. J.: Czechoslovakia Specialized. Masaryk Issue.  
Cz. P. S. Silver Medal
- Laddie S. Pata, Maple Hts., Ohio: Czech Culture. Stamps Showing People, Places and Events of Czech Culture.
- H. E. Laufer, New York, N. Y.: Slovakia  
Švabinský's Sketches in COURT OF HONOR.
- Dr. Wm. Reiner-Deutsch, Bayside, N. Y.: Early Postal History of Czechoslovakia—Non-Competitive
- Comment: A beautiful collection of Mark G. Snow from Cleveland, Ohio, reached New York too late to be seen by the judges and to be placed into frames.

#### NEW MEMBERS

- 786 Josef A. Barton, P. O. Box 351, Taylor, Texas
- 787 Dr. Ben A. Merrick, 3435 Lawther Drive, Dallas, Texas
- 788 Steve B. Liska, 7412 Lyons, Morton Grove, Ill. 60053
- 789 A/2c Carl W. Probst, AF 12692691, C. M. R. 1 Box 433, Westover AFB, Mass. 01022
- 790 Dr. George Mandler, 913 Webster Street, Chillicothe, Mo. 64601

#### ADDRESS CORRECTIONS

- 227 Frank J. Rosner, 3727 4th Ave. North, St. Petersburg, Fla. 33713
- 766 B. J. Chervenka, 1919 Buccaneer Drive, Sarasota, Fla.

### CZECHOSLOVAK COVERS AND CARDS

with special Commemorative Cancellations (1945-49)

15 cents each or 8 different for \$1.00 or

25 for \$3.00 or 100 for \$11.00

all post free

Note: The lots of 25 and 100 will have some duplication.

Orders for less than \$1.00 respectfully declined

#### B. J. MILLER & SON

264 East 180th Street

New York 57, N. Y.

## A PHILATELIC NEW LOOK AT THE SMITHSONIAN

By Carl H. Scheele

Associate Curator in Charge, Division  
of Philately and Postal History

Reprinted from the SPA Journal



The new Hall of Philately and Postal History in the Museum of History and Technology represents not only a substantial increase in the philatelic exhibition area of the Smithsonian Institution but an important change with respect to philatelic exhibition techniques. This change results from a broadening of the underlying philosophies which have emerged since the old philatelic exhibits were installed many years ago.

Philatelic exhibition at the Smithsonian dates from 1911, after David W. Cromwell, a wellknown philatelist of New York City, had begun a series of philatelic donations. The curators of the all-inclusive Division of History (the ancestor of present day, highly specialized divisions) simply placed some of Cromwell's albums, opened to pages containing some colorful stamps, in glass-topped cases. This rather straightforward solution to the problem of exhibition was discarded after the Post Office Department closed its postal museum and transferred the collections to the Smithsonian in 1911 and 1912. The transfer amounted to more than 200,000 stamps, postal stationery items, and miscellaneous objects, and the Smithsonian, certainly pleased with such a windfall but temporarily bewildered by such a quantity, soon secured the services of Joseph Leavy, one of the foremost philatelic scholars of the day, to organize the new collection and prepare exhibits of appropriate material.

Leavy's approach to the problem was naturally more scientific than merely placing open albums in cases but, in retrospect, was equally simple. He mounted stamps on typewritten pages and placed the pages in modified picture frames—viewed from both sides—that were withdrawn from cabinets by interested visitors. We have termed these very practical exhibit units "pull-out frames" and find that the cabinets built under Leavy's supervision are still serviceable.

However, Leavy attempted to display each basic stamp variety ever issued by any nation since the Penny Black appeared in 1840. For many years, this philosophy prevailed and, for many years (as strange as it may seem today), there were surplus frames available for displaying cut-square postal stationery pieces, revenue stamps, proofs, and some full sheets of stamps of the United States. Leavy's fundamental aim of showing at least one copy of every basic postage stamp ever issued had a certain merit. Even after World War II, when it became apparent that the available pull-out frames would soon prove insufficient, the Leavy philosophy persisted.

This philosophy was revised when the general collection was remounted on commercially printed pages of a somewhat specialized nature and after test models of giant-size pull-out frames proved unsatisfactory. The pages emphasized the empty spaces—the missing items in the Smithsonian's basic collection.

By 1963, the task of remounting stamps was completed and the space al-



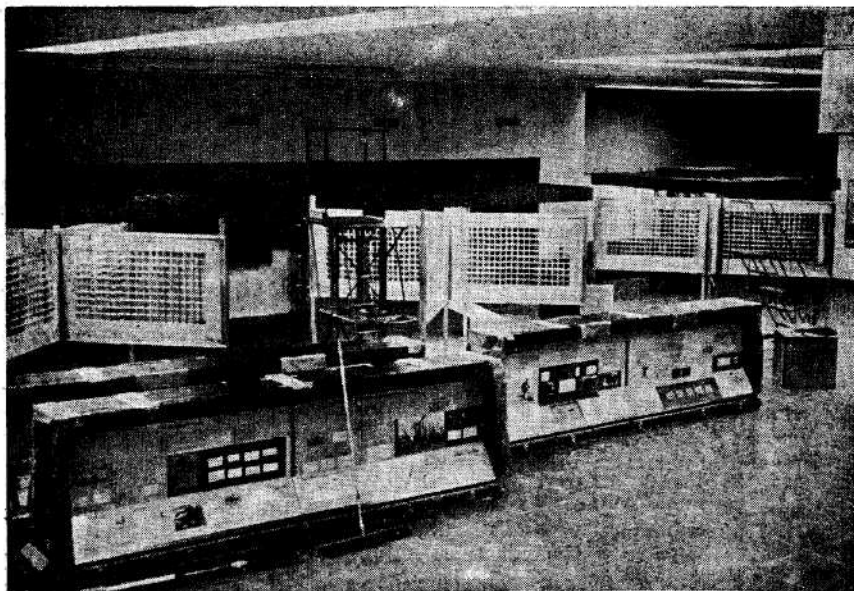
lotted for the various exhibits in the new Hall had been determined. It had become possible at that time to tick off on one's fingers the number of years of future "growth space" that could be built into the new Hall.

The result of this realization was a re-evaluation of the exhibit program in relation to the idea of "stamps and the visitor." It was concluded that the visitor derived no benefit from empty spaces and empty frames reserved for "growth space." It was also concluded that the specialist—the student—could not work well with stamps which were mounted behind glass in a public area. Finally, it was determined that more than 470 double-sided pull-out frames of postage stamps, with comparatively few blank spaces represented an adequate display of stamps for the average visitor and collector.

The new Hall of Philately and Postal History contains much more than just the representative display of postage stamps. Interests have broadened since Leavy's day. There had been little in the way of foreign postal stationery, cancelling devices, models of vehicles used in the postal service, examples of actual mail carried, or stamp-production equipment exhibited during the first fifty years of philatelic exhibition at the Smithsonian.

It seems rather odd that this was so, because Leavy had a nucleus of significant historical objects which had been transferred from the Post Office Department. However, the changing interests were first apparent when Mrs. Catherine L. Manning, Leavy's successor, compiled important historical data relating to the design of United States stamps. Franklin R. Bruns, Jr., Mrs. Manning's successor, enlarged the scope of the collections and became the first curator to formulate plans for philatelic and postal history exhibits in the then-planned Museum of History and Technology. By that time, the display of the basic stamp collection had become just one of many considerations for a well-rounded philatelic and postal history exhibition.

The history of the development of postal services, from origins in the



Smithsonian Institution Photo

Floor exhibit cases and X-frames are moved into place in the new Hall of Philately and Postal History

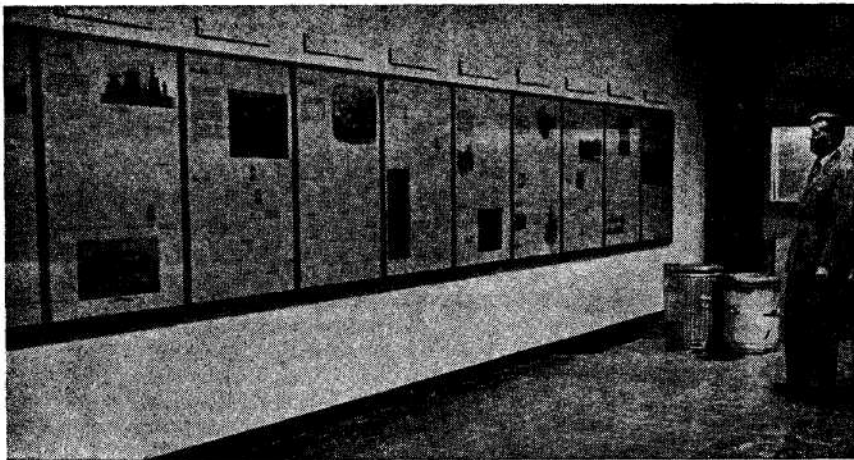
ancient world to the present electronic era, became a dominant theme in the new Hall. This is dealt with in the first series of exhibit cases in the Hall. In this sequence, technological development is traced by showing clay tablets bearing cuneiform messages, a papyrus letter, a courier's letter-carrying box of Japan, folded letters of pre-stamp days, covers, stamps, and other artifacts relating to postal services.

These objects are arranged in a general chronological order and are grouped according to various historical and technological themes developed in brief texts and captions, maps, artists' renderings based upon factual data, charts, tables, and photographs. The postal history cases trace developments on a world-wide basis, but American postal history is fully treated and is given the greatest percentage of space.

This approach is also used and somewhat enlarged upon in two other areas of the Hall—in an exhibit case surveying the peculiar and interesting postal service of the Confederacy and in a series of wall cases devoted to the postal history of the District of Columbia. Both of these units are temporary and will be changed after several years.

The History of the Post cases are augmented by two large "islands" of three-dimensional objects, including models of vehicles used to transport the mails and postage meter and cancelling machines. These exhibits enable the visitor to visualize or actually see at first hand many technological developments which have played important roles in the field of written communications. A country-store post office of about 1880 is recreated by using actual furnishings and postal equipment. This exhibit technique is a rather common treatment in museums but is used for the first time in connection with postal history exhibits at the Smithsonian.

Technical aspects of stamp production in the United States are surveyed in the Hall's "Production Area," where a Stickney rotary printing press of 1914 is exhibited. This press, which was formerly used at the Bureau of Engraving and Printing and only recently retired from service, was reconditioned and modified to operate for brief periods of time to simulate the printing and gumming of stamps. The complex modification was accomplished at the Bureau by a team of experts for the Smithsonian and required more than a year of planning, mechanical reconstruction, and testing. Plates were prepared which



Smithsonian Institution Photo

Wall frames trace District of Columbia postal history

utilize the "Horse and Rider" emblem of the Post Office Department.

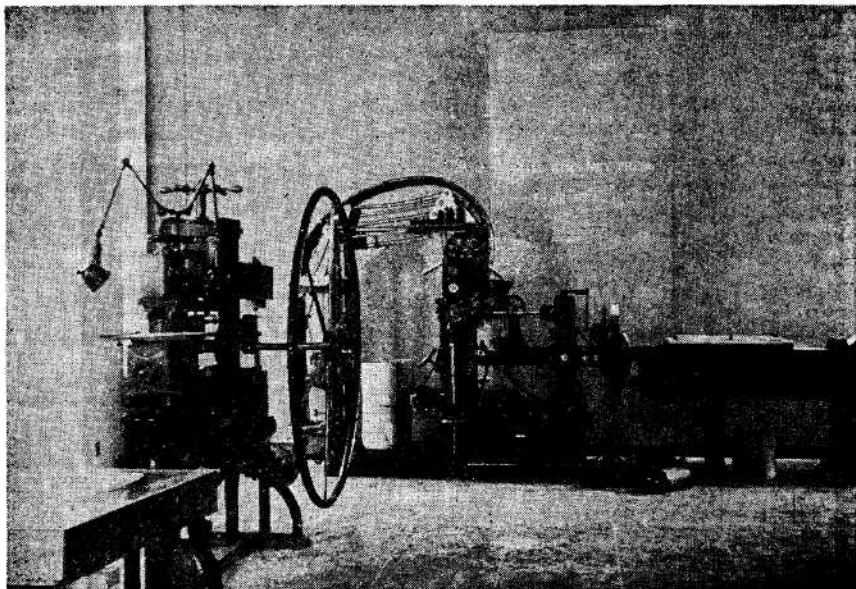
The "Horse and Rider" design was also used for the roll and partially entered printing plate which are mounted in position on the transfer press, also secured from the Bureau of Engraving and Printing. In addition, the agency also transferred a Stickney coiling machine of 1920, a Stickney perforating machine of 1918, and an engraving desk, as well as supplying the photographs used in the large "flow chart" which graphically explains how stamps are produced at the Bureau.

The creation of the Production Area of the new Hall is an outstanding example of cooperation between two government agencies in giving the public meaningful museum exhibits. This spirit of cooperation was also necessary to create other portions of the Hall.

The Post Office Department, especially the Philatelic Agency and the Library, have given valuable assistance in supplying necessary data for writing labels and securing many key specimens. The transfer of the second Postal Museum collection of that Department was a major contribution toward completing many historical sequences. The Library of Congress has also furnished numerous items and valuable information.

Several large eight-paneled "X-Frame" cases are used to feature stamps not shown in the pull-out frames or postal history cases. One case of this type is devoted to a unit called the "Language of Philately." This display illustrates many technical terms peculiar to the field of philately by showing actual examples of stamps which are best suited for this purpose. Aside from illustrations in books or journals and an occasional private exhibit, this is one of the first permanent displays of this type in the United States.

Other X-Frames contain displays featuring the historical aspects of United States revenue stamps, topical exhibits, illustrated envelopes, and recently acquired stamps. Early philatelic publications and the ever-popular "Owney,"



Smithsonian Institution Photo

Three dimensional exhibits include a small Stickney rotary printing press and a die transfer press from the Bureau of Engraving and Printing



the dog who rode the mail cars, are also exhibited.

The original and simple technique of showing stamps for their own beauty, peculiar, and even unique qualities still prevails in a number of exhibit units. The stamps are grouped according to common qualities, and one may find delight in looking at the "Rare Stamps" or "Souvenir Sheets" or portions of the Emma Batchelor Collection of Airmail Stamps.

The contents of the Hall—with respect to both the type of themes developed and the individual objects—have been determined and selected by the staff members of the Division of Philately and Postal History. Texts and labels are based on research performed by members of the Division. The actual writing was also done by philatelic staff members and carefully reviewed by the editorial staff to insure accuracy, correct format, and consistency with texts and labels appearing elsewhere in the Smithsonian's museum complex.

Exhibit planning was performed by designers who were primarily responsible for the general layout of the Hall, case design, arrangement of case contents, special lighting effects, and general design relationships between the Hall and the rest of the Museum. Other service divisions of the Smithsonian performed special work in moving the exhibits into place and constructing the various structural features of the Hall. The photographic laboratory and the Library of the Museum of History and Technology also supplied indispensable services.

The numerous technical devices employed in the exhibit cases may often be quite obvious. Labels have been type-set and silk-screened into place. Some photographs have been mounted directly on the panels or reproduced by a special process and silk-screened. Some graphic elements have been reproduced from line or wash drawings by staff artists.

The actual mounting of the stamps and covers was accomplished by using good peelable hinges. It may be a surprise for some collectors to learn that mint stamps are hinged to the mounting base, but more than a half-century of experience indicates that most mint stamps are not damaged by careful hinging.

The construction of the Museum of History and Technology provided the philatelic staff members with a rare opportunity to present new ideas and techniques in this many-faceted field of exhibition, and there has been an attempt to retain the greatest degree of flexibility within the Hall for implementing new thoughts which will undoubtedly continue to emerge.

**The following unbound back numbers of the Specialist are available:**

1940 missing Jan.-April, Oct. and Nov. ....	\$1.80
1941 missing April .....	2.70
1945 missing Jan., Feb., April and Oct. ....	1.80
1946 and 1947 complete .....	each 2.00
1948 missing March and June .....	1.60
1949 to 1961 complete .....	each 2.00
1962 and 1963 complete .....	each 3.00
<b>Bound Volumes of Specialist—First Come First Served</b>	
1946-47, 1949, 1950-51, 1951, 1951-53, 1952-53, 1953-54, 1954,	
1954, 1954-55, 1955, 1957, 1958, 1958-59, 1959, 1960	
Single volume \$4.50, double \$6.50 and triple \$8.50	
1962 1963 .....	\$5.50 each

ORDER from the TREASURER

JOSEPH STEIN

585 East 21 Street

Brooklyn, N. Y. 11226

## J. H. STOLOW, INC., AUCTION

July 15, 1964

(continued)

		Cat.	Estimated	Prices
		Value	Net Value	Realized
★	—	Several hundred stamps (maj. unused), neatly arranged on stock pages, semi-postals between B1-123, in various quantities, incl. B89, plus many not counted, all orig	763.00	350.00 60.00
★	—	B31A, 10 K deep violet, o.g., very fine	100.00	60.00 44.00
★	—	B37-38, surch. on Airpost stamps, o.g. v.f.	100.00	60.00 32.00
★○	—	A stock book with hundreds of stamps, incl. semipostals, dues, newspapers, blks., dups., etc., useful lot	40.00	10.00
★	—	482 stamps on album pages, B124-29, 15h-120h in singles and blks, incl errors of color, perforation, pl. nos., cancellations, etc. A comprehensive coll. of this interesting issue. Over 100 different color proofs	130.00	30.00
★	1920	B130-32. Red Cross ovpt., also proofs and essays of ovpt., ovpt. on unissued stamps, imperf., etc. Interesting group. (75 stamps)	80.00	56.00
★	—	B133-139, 5th Anniversary and Olympic Congress issues, 4 sets of each, with diff. wmk. o.g., f.-v.f.	234.40	200.00 150.00
★○	1923	B133-36 50h-300h, varieties of paper wmk., and monogram on back, also 5 sets on 1 cover, very fine	90.00	50.00 21.00
★	1925	B137-39, 50h-200h Int. Olympic Congress, 4 sets showing the 4 vars of wmk (nos. 5 to 8 in the Czech specialized cat., o.g., fine to very fine (12 stamps)	240.00	130.00 102.00
★	—	B137-39, Olympic Congress, o.g., very fine	60.00	40.00 23.00
★	—	B137-39, Olympic Congress, o.g., f. to v.f.	60.00	40.00 21.00
★	1926	B140-43, 50h(3), 100h, 200h(3), 300h(2) with wmk. #7 and and 8 in the Czech spec. cat. o.g. f.-v.f.	110.00	60.00 39.00
★	—	B140-43, Sokol Issue, 4 sets with diff. wmk. positions. o.g., f.-v.f.	186.00	100.00 97.50
★○	—	B140-43 used and B141-43★ o.g., Sokol issue, f.-v.f.	75.75	45.00 20.00
★	—	B140-43, Sokol issue, o.g., fine to very fine	46.50	30.00 26.00
★	—	B140-43, Sokol issue, o.g., fine to very fine	46.50	30.00 20.00
★	—	B140-43, Sokol Congress, also 119-22	59.00	38.00 17.00
○✉	—	B140-43, Sokol on reg. backstamped, F. D. Cover, fine to very fine	31.00+	22.00 15.50
★○	—	C1-6, Airpost sets (C1-3 are used), (o.g.), v.f.	61.00	40.00 15.00
★	1920	(C1-6), Color Proof for comparison, Interestg lot, (25)	100.00	31.00
—	—	(C1a-3a) complete set, each value w/inverted overprint, o.g., very fine	60.00	40.00 32.00
★	—	C6a, 28K on 1000(h), with overprints, inverted, o.g., v.f.	35.00	20.00 25.00
★	1922	C7-9, Airposts overpt., 10 complete sets, o.g., fine to v.f.	52.50	30.00 9.00
★	1921	E1a-3a, Sp. Delivery, white paper, 11 cpl. sets in singles and blks of 4, rare, o.g., fine to very fine	123.75	75.00 15.00
★	—	E1a-3a. Sp. Delivery, white paper, 10 cpl. sets in singles and blks of 4. Rare, o.g., fine to very fine	111.00	70.00 27.00
★○	1918	40 stamps on 2 pages, Interesting Coll. of emergency Newspaper stamp issues and postage due ovpts., incl. bisects, (o.g.), fine to very fine	35.00	15.00
★	1928	40 diff. essays for the 10th Anniv. issue, also illustrations of		

	others, interesting, o.g., very fine -----	40.00	12.00
★ 1918	Budweis (Horn) local ovpt. in black, on Austria 145-49, 54-63, dues, etc., o.g., very fine (39 stamps on 2 pgs.) -	45.00	21.00
★ 1945	Stamps of Boh. and Moravia overprinted for Ceske Dubejovice (8), Rumburk (19), Klatovy (1), etc., o.g., fine to very fine -----	25.00	10.09
★ 1945	Stamps of Boh. and Moravia overprinted issue for Cerekvice, 10h-10k (23), Kojetin (3), Zamberk (17), o.g., fine to very fine (48 stamps) -----	35.00	15.00
★ —	Liberation issues of Domazlice, 62-83, 88-89, stamps of Bohemia and Moravia overprinted, also set of Alomonic issue, imperf. o.g., fine to very fine (34 stamps on 4 pgs.)	20.00	10.00
★ —	Bohemia and Moravia stamps 62-83, 88-89, overprinted in red and black, Liberation Issues of Friedeck, also two covers, interesting, o.g., fine to very fine (71 stamps) -----	40.00	40.00
★ —	Havlikuv Brod, provisional issues, o.g., fine to very fine (39 stamps) -----	20.00	10.00
★ —	Stamps of Boh. and Mor. overpt. for Hradek Kralove (16), Upice (23), o.g., fine to very fine (39 stamps) -----	45.00	20.00
★ ⊗ —	Hradek Krulove issue, 10h-2.40k, tied to registered cover, fine to very fine (12 stamps) -----	20.00	10.00
★ —	Hulin, 40h-8k, three diff. issues, o.g., f.-v.f. (45) ---	20.00	10.00
★ —	Provisional issue for Josefov, 10h-1.20K (8), also 10h-50k, 4 sets with diff. overprints, o.g., fine to very fine (100)	35.00	20.00
★ —	Liberation issues of Kladno, Bohemia and Moravia 62-83, 88-89, Officials, Newspaper stamps, overprinted, o.g., fine to very fine (45 stamps on 5 pgs.) -----	22.50	18.00
★ —	Kourim provisional issue (14), Val Kloubouky (10), Tabor (3), Litovel (6), o.g., fine to very fine (33 stamps) --	25.00	12.00
★ ⊗ —	Provisional issue for Libice and Vleatavou (9), tied to registered cover, very fine -----	20.00	10.00
★ —	Morovska Nova Ves, Liberation issues, o.g., fine to very fine (37 stamps) -----	20.00	10.00
★ —	Nezdice, provisional issues, "CSR" monogram ovpt. in black and red, etc., o.g., fine to very fine -----	35.00	15.00
★ —	Provisional issues for Plzen, 5 diff. issues overprinted in Boh. and Mor. stamps, o.g., fine to very fine (143 stamps on 12 pages) -----	75.00	35.00
★ —	Provisional issue for Plzen, stamps of Boh.-Moravia 10h-50K and commemoratives, overprinted, o.g., fine to very fine (32 stamps) -----	25.00	10.00
★ ⊗ —	Liberation issues, three registered covers, 1 from Rakovnik and 2 from Praha, very fine (19 stamps) -----	25.00	12.00
★ —	Stamps of Boh.-Moravia overpt. for Ricany (17), Brno (12), Olomouc (5), o.g. fine to very fine (34 stamps) -----	22.50	15.00
★ ⊗ —	Provisional issue for Ricany w/Praha (5), tied to registered cover, very fine (7 stamps) -----	35.00	15.00
★ —	Provisional issue for Praha, Slabice, etc., o.g., fine to very f. (56 stamps on 5 pgs) -----	35.00	15.00
★ —	Provisional issue for Pustimer, stamps of Boh.-Mor. ovpt. o.g. fine to very fine (30 stamps) -----	25.00	15.00
★ —	Rumburg provisional issues, stamps of Germany 1pf-4M, and 6 Comm. of Boh. and Mor. issues, o.g., fine to v.f. (31)	20.00	12.00
★ —	Liberation issue for SAMORIN (15), 10h-10K, SVITAVY, under Russian Occup. 3pf-8pf(10), HORNI BRIZA (4), over-		

	prints, o.g., fine to very fine (29 stamps) -----	25.00	21.00
★	Slavkov issues incl. 3 Newspaper stamps, o.g., very fine (11 stamps) -----	20.00	10.00
★	Stamps of Boh. and Mor. overprinted for Svaty Kopecek (23), Prostejov "Hannak" (27), o.g., fine to v.f. (50) -----	30.00	15.00
★	Tupadly, provisional issues overprinted. Postage commem. officials, o.g., fine to very fine (49 stamps) -----	20.00	12.00
★	Liberation issues for USTI N. L. (6), KNINICKY (3), Blumov na Vlare (6), Prusinovice (17), overprinted, o.g., fine to very fine -----	20.00	10.00
★	Wildenstein, "U. S. Army in CSR" overprinted on 7 German Commem stamps, o.g., very fine -----	25.00	10.50
★	Zambersk issue, stamps of Bohemia and Moravia, overprinted incl. one cover, o.g., fine to v.f. (66 stamps) -----	35.00	15.00
★	Zambersk issue, on two covers, very fine (14 stamps) -----	20.00	10.00
★	1918 Revolutionary Budweis ovpt. (2 diff., Horner and Beck), etc. on Austria 145-59, 63, J49-59, etc. (o.g.), f to v.f. (6) -----	35.00	14.00
★	1945 Stamps of Boh. Moravia 30h-10K, overpt. with coat of arms in red and violet, also two entire, o.g., fine to very fine (17 stamps) -----	20.00	10.00
★	Stamps of Germany 1pf-5M, and of Boh. and Moravia 10h-50K, etc. overprinted "CSR" within double circle, in black and red, o.g., fine to very fine (66 stamps) -----	25.00	17.50
★	1918-20 Specialized Collectio nof Proofs and "Specimen" Hradcany issue, very interesting (62 stamps on 8 pages) -----	30.00	26.00
★	1919 Coll. of Imperf. proofs of 2nd Hradcany issue, (Scott TY A2) incl. double prints. Some in blocks of 4, v.f. -----	75.00	27.00
	Specialized Collection of "Specimen" Special Delivery, Newspaper and Postage Due issue, o.g., f.-v.f. -----	20.00	19.00
★	1920 Desirable Coll. of imperf. color proofs, mostly of Scott's types A5, 6 and 2, incl double prints. Some strips and blocks, very fine (285 stamps) -----	75.00	50.00
★	Scott type A4, 31 color proofs, interesting lot -----	35.00	16.00
★	Imperf. Color Proof, sheet of 14 (in yellow), of Scott Type A4, 5, 6, o.g., very fine -----	40.00	18.00
★	32 imperf proofs, in black, of Scott Type A5, 6 and 8, on var. paper, very fine -----	25.00	6.00
★	35 Color proofs, mostly imperf of Scott Type A5, 6 and 8, some se-tenant, in strips of 3 or 4, v.f. -----	60.00	23.00
★	53 color proofs of Scott type A5 and 6 on colored paper, few pairs, very fine -----	40.00	11.00
★	25 Essays (23 diff.) Interesting group, very fine -----	25.00	6.50
★	25 essays incl block of 4 and min. sheet of 10 in var. colors and sizes, all in design of Scott, type A5, v.f. -----	40.00	27.00
★	37 diff. essays, mostly rejected designs for regular issue, incl. some pairs or blks of 4, interesting, f.-v.f. -----	25.00	8.50
★	Coll. of approx. 100 diff. essays incl some die proofs, a beautiful and interesting group, very fine -----	100.00	10.00
★	25 essays, some similar to Scott type A4-6, some in se-tenant strips or blocks, very fine -----	50.00	15.50
★	Hundreds of stamps in 3 stock books, also some Germany, useful duplicates, etc. -----	40.00	10.00
★	1920-61 Approx. 1500 stamps on stock pages, incl. C1-52, in singles and blocks of various quantities from 10 to 40 of each, incl. types, shades, both mint and used, etc., f-vf -----	582.00	230.00
			50.00

- ★○ 1918-55 Approx. 3045 stamps on stock pages, incl J1-94, in singles and blocks, in various quantities from 1 to 40 of each, both mint and used, etc., fine to very fine ----- 494.00 200.00 40.00
- ★○ 1918 (Post Cards). 335 cards, incl. int. items, scenic cards, one book contains Slovakia, unusual collection ----- 120.00 21.00
- ★○ 1936-1949 B150-51, 56-57, 23-27, 32-35, etc., stock of commems, airs, etc., mostly 20 or more each, incl. 80 copies of #226 (some w/o gum), mostly w. tabs, some blks, (o.g.), fine to very fine ----- 194.00 70.00 28.00
- ★○ 1929-34 #159-63, 65-71, 83-201 Commems., picts., etc., incl. shades, plate var., plate no. sgls., etc. (o.g.), fine-v.f. ---- 70.00 20.00
- ★75% 1940-45 #45-49, 58-64, 70-82, B2-27a, etc. Incl. plate and wmk. var., pl. and sgls., etc. (o.g.), fine to very fine ----- 100.00 20.00
- ★○ 1925-27 #95-125. Spec. Coll. of over 300 stamps, incl. types, shades, pl. no. sgls., etc. Interesting group, (o.g.), f. to v.f. --- 100.00 15.50
- ★○ 1918-19 #1-20. A Spec. Coll. of over 500 stamps of the 1st Hradcany issue, incl. shades, plate, paper and perf. var., etc., interesting, (o.g.), fine to very fine ----- 200.00 50.00
- ★○ 1918-19 #13-40. A Spec. Coll. over 300 stamps of the 1st Hradcany issue perf. and 2nd issue imperf., showing type, perf. and shade var., rich in plate flaws, errors, etc. Interesting group (o.g.), fine to very fine ----- 130.00 85.00
- ★○ 1920 EASTERN SILESIA. #1-50, J1-11, etc., spec. of over 500 stamps, a comprehensive coll. incl. #21-32, proofs of same, rich in ovpt., var., etc. (o.g.), fine to very fine ----- 350.00 40.00
- ★⊠ 1938-45 Interesting coll. of Fieldpost cards, mostly from 1938, incl. censor markings and var. postmarks. Also Czech Fieldpost in England and France, and Slovak Field post cards, fine to very fine ----- 100.00 32.00
- ★○ 1919-20 #41-53, etc. Spec. Coll. of over 500 stamps of 2nd Hradcany Issue perf., incl. shades, perf. and plate var., types etc. Interesting, (o.g.), fine to very fine ----- 130.00 35.00
- ★○ 1920-25 #65-73, 82-91. Spec. Coll. of over 400 stamps, incl. errors, plate var. imperfs, shades, etc. Interesting (o.g.), fine to very fine ----- 150.00 40.00
- ★○ 1949-60 (Wholesale) a stock book loaded with thousands of stamps, almost all are pictorials or Commems., Souv. sheets, etc., all in useful fast moving quantities, etc. ----- 400.00 97.50
- ★ 1945 225 covers, maj. F. Days with Special cancels, interesting lot ----- 100.00 17.50
- ★○ — (Wholesale). Several hundred commems. and semi-postal sets in various quantities incl. B130-36, 144-49, etc. Good approval material ----- 324.00 120.00 29.00
- ★⊠ 1918 Michel #I and II, Scout issue, 10h, 20h cpl., each tied to cover. Rare thus, very fine ----- 80.00 85.00
- ★○ — Michel #I, II, etc. 10h, 20h Scout issue cpl. ★ and used, also 4 diff. color proofs of 20h (o.g.), very fine ----- 80.00 42.00
- ★○ 1918 Scout Issue 10h, 20h (Michel I and II) w/Masaryk ovpt., each tied to cover (rare thus), also 20h mint, also Scout post card (o.g.), very fine (3 stamps) ----- 200.00 87.50
- ★○ 1918-20 Czecho-Siberia. #1-14, etc. A beautiful coll. of the rare Russian ovpt. (Michel #1) on piece, essays, color proofs, var. types, #4 on Commercial Cover and Pict. card, etc. A most interesting group, (o.g.), fine to very fine (145 stamps on 48 pages) ----- 350.00



★	1919	Czech. Legion Post. #1-3, Legion Post, Perf. 13¾, 10 cpl. sets, o.g., fine to very fine -----	8.50
★	1920	#4. Lion of Bohemia, 29 copies type I, 25 copies type II, also #5 (2), 6, 9, 12, 14, o.g., fine to very fine -- 115.00 65.00	13.00
★	1919	#4. Czech Legion in Siberia, Lion issue, 20 diff. color proofs, o.g., very fine -----	75.00 46.00
★○	1920	Czech Legion in Siberia. Michel #1-17, incl. #7 used, 6-14 w/o 1920 ovpt., all unpriced, etc. Also Czech. "Scout" issue, Michel #I-II used DM 916.00+ \$229.00-----	125.00 77.50
★	1919	— 25 diff. essays, very fine (2 pages) -----	25.00 10.50
★○	1939	(CARPATHO-UKRAINIA). A small specialized Collection of #1 in singles, blocks, tabs and F.D.C.s, also letter w/Hungarian frankings, unusual, f.-v.f. (5 pages) -----	10.00 30.00
★	1943	(BOHEMIA and MORAVIA). Michel #131, Memorial "Heydrich souvenir sheet" with serial #536, Perf. DM 1000+, \$250.00, o.g., superb, rare -----	125.00 250.00
★	1939-44	— Nice stock of over 450 stamps incl. blks., gutter pairs, pl. # singles, etc., o.g., fine to very fine -----	30.00 15.00
★	1939-40	(SLOVAKIA). #1-49, B1, C1-6, P1-36 ovpt. 5h-10K cpl., etc., o.g., fine to very fine (75 stamps) ----	74.90 45.00 27.00

## Parade Of New Issues

Edited by Frank Kosik

### 150th Anniversary of the Silesian Museum in Opava



Issued June 20, 1964:

- 30h Colors: black and yellow. Dimensions, 30x23 mm.  
Designed by Jaroslav Šváb and engraved by Bedřich Housa.  
Rotary recess print combined with photogravure in sheets of 50.

### 100th Anniversary of Voluntary Fire Brigades



Issued June 20, 1964:

- 60h Colors: red and pale blue. Dimensions: 41x23 mm.

Designed by František Hudeček and engraved by Josef Herčík.  
Rotary recess print combined with photogravure in sheets of 50.

**IVth Congress of the Czechoslovak Red Cross Society**



80h Blue and red. Issued July 10, 1964

Designed by Ludmila Jiřincová and engraved by Bedřich Housa.

Dimensions: 30x23 mm.

Printed by rotary recess print combined with photogravure.

First Day Cover designed by the artist, engraved by Jaroslav Gildschmied.

**IVth European Cardiological Congress, Prague 1964**



1.60 Kčs Red and blue. Issued July 10, 1964.

Designer by Josef Istler and Engraved by Jan Mráček.

Dimensions: 19x23 mm.

Printed by rotary recess print combined with photogravure.

First Day Cover designed by the artist, engraved by Jaroslav Gildschmied.

Just received shipment of Forgery Book, cost \$3.96 postpaid

## TRAVELING?

CZECHOSLOVAKIA SPECIALIST:

**František Ales**

**ALESH TRAVEL AGENCY, 1371 First Ave., New York 21**  
near 74th Street — Phone LE 5-4944

Authorized Čedok (Official Travel Office Prague) representative.  
Visas, Hotel Vouchers, Money transfers Tuzex, Gift Certificates, Guidebooks  
and maps of ČSSR. Dictionaries, Translations, Immigration Affairs, Affi-  
davits for Visitors.

"Travel with the man who was born there".

---

---

---

---

---

# **WANT TO BUY**

MINT MINT  
**CZECHOSLOVAKIA**

ISSUES 1923-1926  
(Scott Nos. 92-118)

Full Sheets

Part Sheets

Blocks

Die Proofs

Color Trials

Plate Proofs

Rare Perforations

Varieties

Rare Watermark Positions

**ARTHUR I. KESSLER**

551 Fifth Ave.

New York 17, N. Y.

---

---

---

---

---